

CLOTHING FOR DISABLED YOUTH

- RUSKIS AND VAMLAS JUBILEE CLOTHING COLLECTION

Mia Wilkman

Maria Ylikoski

From Fashion and clothing

Ruskis and Vamlas Jubilee Clothing Collection

- The Vamlas Foundation and Ruskeasu school for disabled children were founded 125 years ago
 - The clothing collection project was created to celebrate this jubilee year
- Collection was created by Metropolia's fashion and clothing students in collaboration with students from the occupational therapy programme
 - Clothes were made in Helsinki Vocational College
- Collection will be presented in fashion shows in May

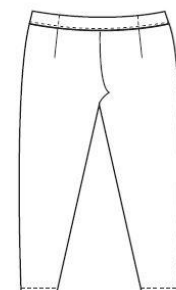
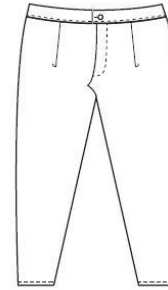
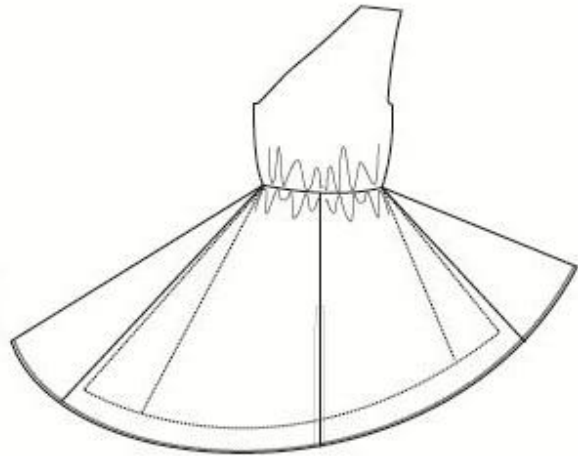
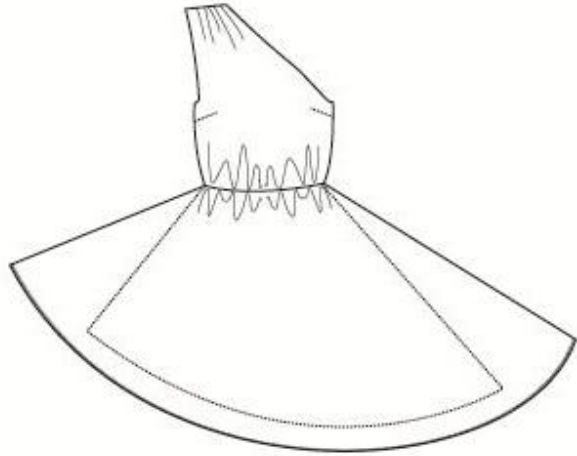
Models

- Two are teenagers and the other two are young adults
- Every model receives two outfits: one for everyday wear and one for formal wear
- Three of the models are in wheelchairs and have some kind of disability with their bodies
 - There is a challenge to find clothes which fit them or are easy to dress up
- All four young models have been very excited about the project
 - This has been an opportunity for them to have custom made clothes

Designing

- Main goal was to create clothes that look no different than any other clothes
- Four different persons and their different styles had to be combined together to create a consistent collection
 - Same fabrics and colors, but the clothes themselves defined their owners style
- TAKE INTO CONSIDERATION:
 - Fabrics had to be comfortable, stretchy, not too warm and not too slippery

Flat drawings



Challenges in Patternmaking



- All special features and solutions had to be nondescript
- It was important that clothes were easy to put on and take off
 - Tops with hidden zippers on both sides
 - Buttons replaced by hidden velcro closures or magnetic buttons
 - Waistbands of trousers elastic with fake zipper flys

Asymmetrical bodies and restricted movements

- Some models had asymmetrical bodies which had to be compensated for when making patterns
 - E.g. shorts had legs of different length but they looked even when put on
- Every model had more or less restricted movements: some could dress themselves but most needed assistance
 - Limbs and joints could not bend and rotate as much as usually, which had to be taken into consideration when making patterns
 - E.g. loops to make putting clothes on easier



Asymmetrical bodies and restricted movements

- One of the models is growth restricted: total height 80 cm
 - Affects her body's proportions, which had to be taken into consideration when making patterns
- Has scoliosis which also affected patternmaking



Wheelchairs

- Back needed more length and front length had to be reduced
- Chairs come with soft wedges placed between thighs to support legs and belts going over thighs to hold the person in chair securely
 - Skirts had to have slits at center back for fabric to lie smoothly without wrinkles
 - Smaller slits were made to both sides of skirts so the safety belt could be hidden underneath the garment



Thank You!