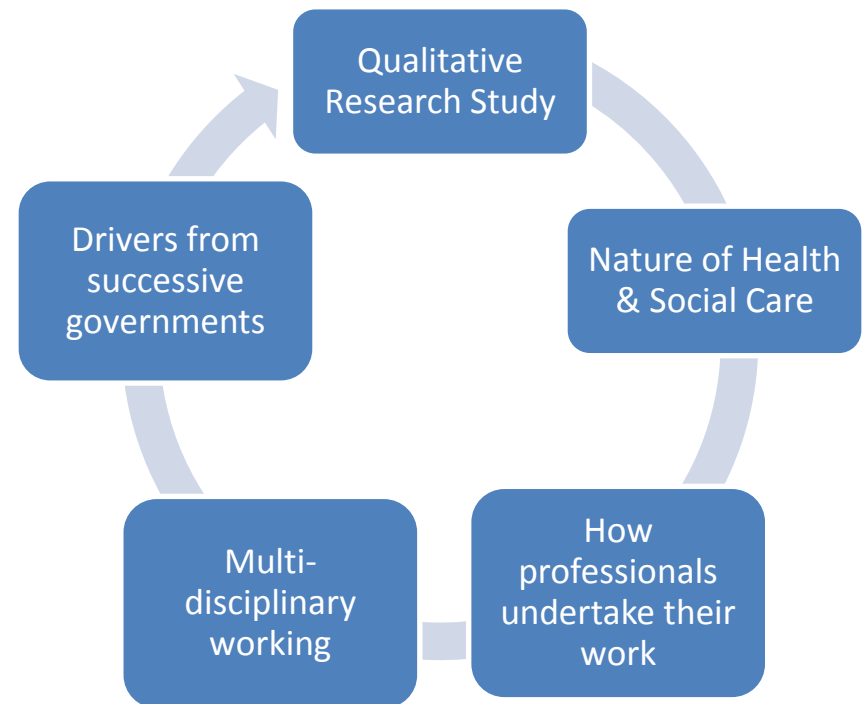


A Research Study

Salford City Council & University of Salford

- Overall aim of the research :
- To explore the value and role of Social Work within a multi-disciplinary team, in the northwest of England in adult services
- The research is underpinned by the modernisation agenda
- (Labour Government 97-10)
- The present Coalition Government has continued this policy.
- The 2010 White Paper *Equity and excellence: liberating the NHS* set out the
- Government's aim to 'simplify and extend the use of powers that enable joint working between the NHS and local authorities'



What is the Research Problem?

Social Work

- Not often referred to as a profession

Social Work

- It is difficult to offer a critique of the social work role

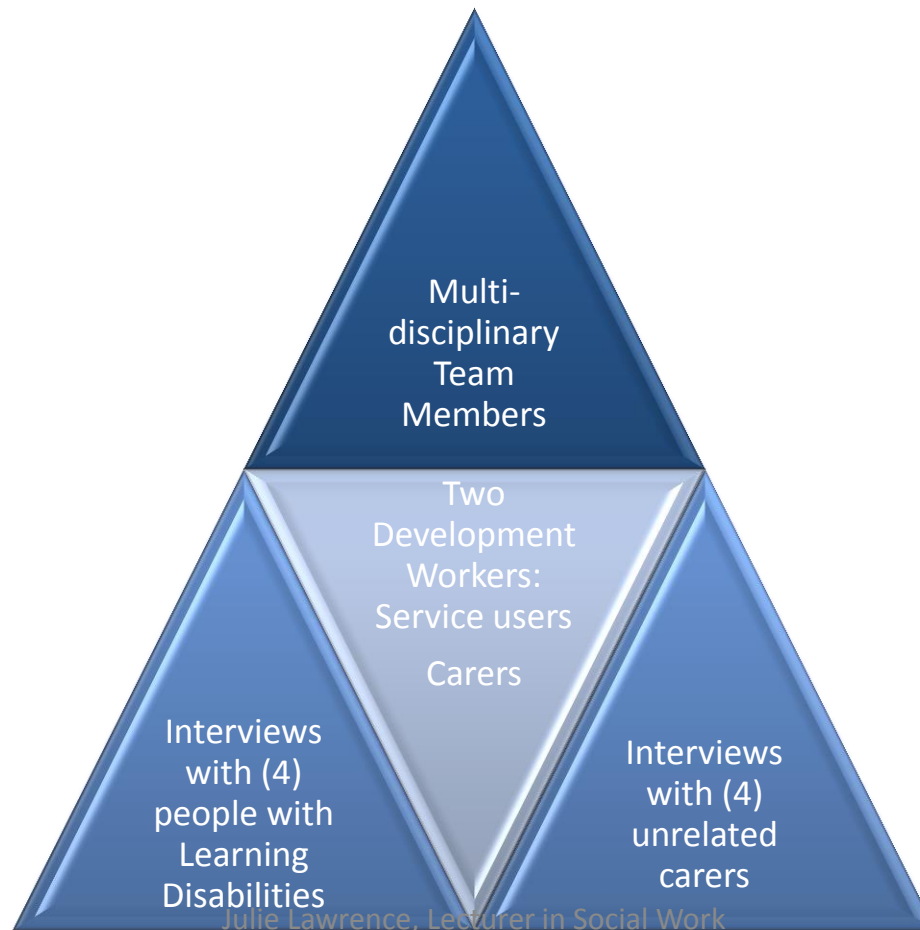
Social Work

- Reforms are being advanced by The College of Social Work

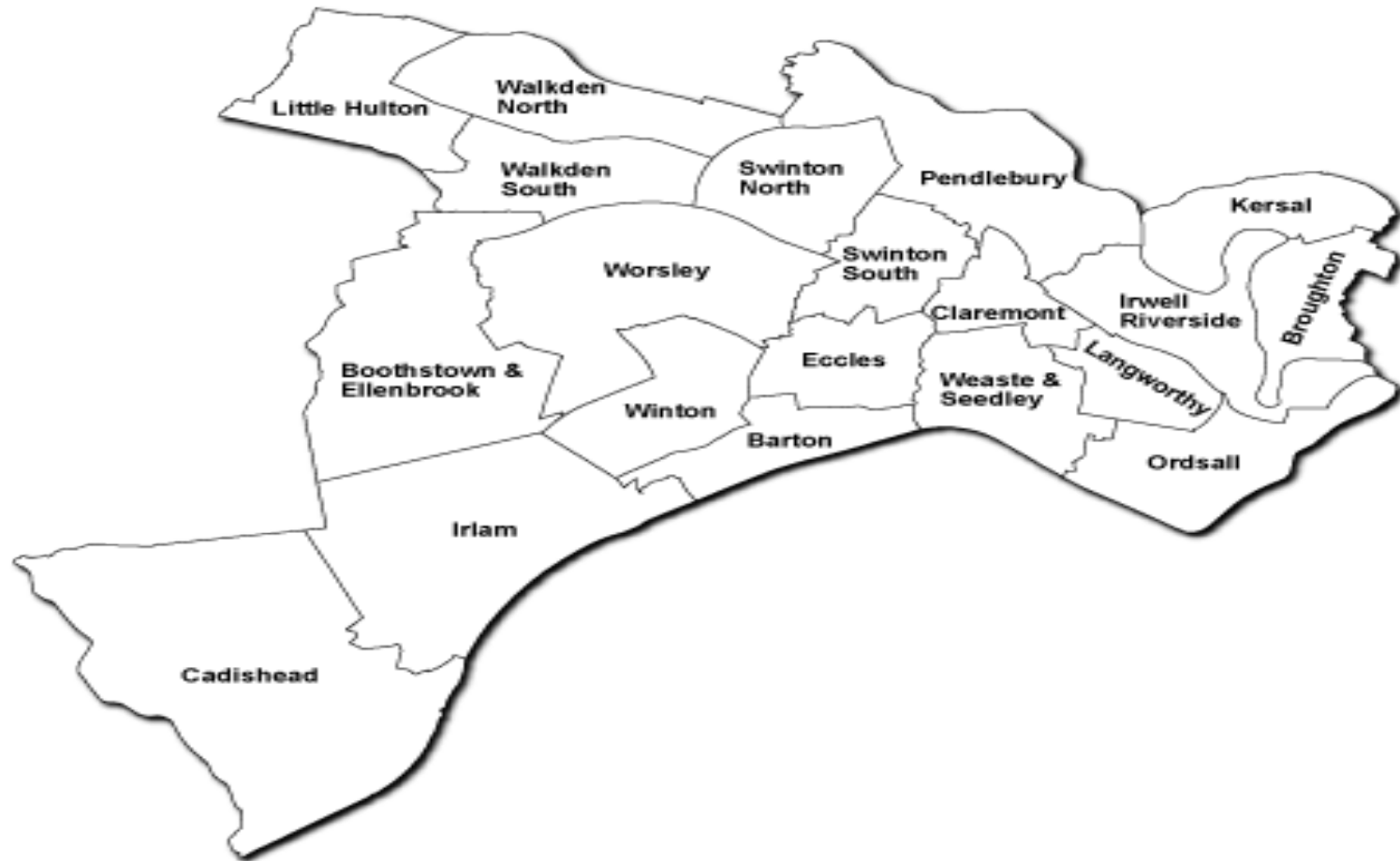
- Difficult to distinguish what is both distinctive & valued about a social work role?
- These conditions lead to:
- Weakness in recruitment
- Retention
- Frontline Resources
- Training & Leadership
- Public understanding
- ...these factors 'hold back the profession'

A Collaborative & Inclusive Research Approach

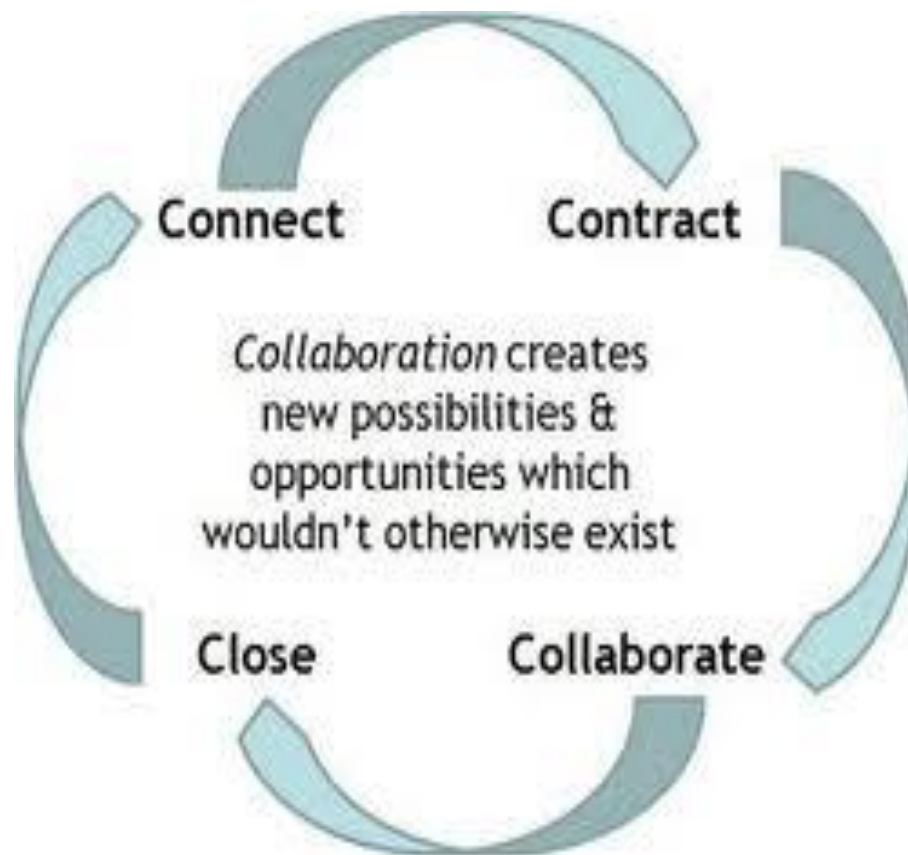
- *Working with Gate-keepers
- *Purposive Sampling
- *Semi-structured interviews with multi-disciplinary team members across Salford City



Salford City Council



... a cycle of collaboration with a variety of multi-disciplinary team members across Salford City and Salford NHS Primary Care Trust



Agreement or Acquiescence? Issues of Informed Consent

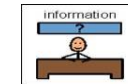
People with Learning Disabilities: issues of informed consent

A Research Problem: efforts made for ethical consent

The Mental Capacity Act (2005)
Academic Poster

What does the literature say?

THIS IS A CONSENT FORM

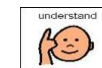


You have been asked to take part in a study about working with Social Workers

Would you like to tell me your story?

I would like to talk to you about:

- ✚ Why you needed a social worker
- ✚ What did the social worker do
- ✚ How did it feel to work with a social worker
- ✚ How long did you have contact with a social worker
- ✚ Do you think this experience has made a difference to your life or situation



- ✚ I understand that I have agreed to talk about my experiences
- ✚ I understand that my conversation will be recorded
- ✚ I know I can say 'Yes' or 'No' to talking about my support

What the research has revealed so far..

Transcription Verbatim Quotes...

Working with Colleagues.. What do they think of Social Workers?

Community
Nurses

- There was quite a bit of bitterness in the beginning we were asking why are nurses doing this role. Nurses and social workers had their roles. We felt we were doing all the giving and not getting much back. We still did our nursing role and the care manager role
- I've worked with other teams. So I do quite a lot of work with children's teams. I've done quite a lot of joint working. The children's social workers are not a problem. They are quite glad to have a specialist around within learning disabilities.

Consultant
Psychiatrist

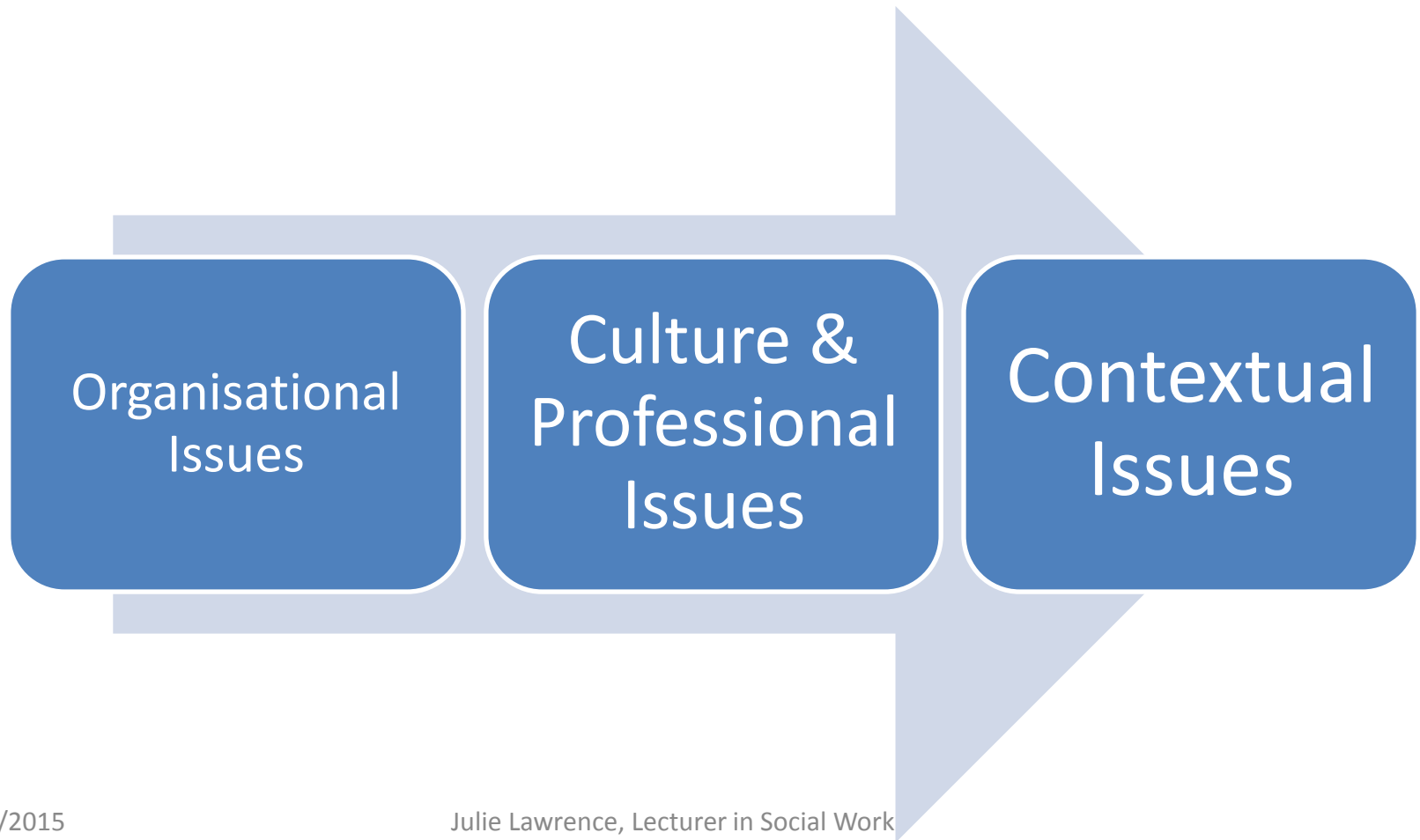
- We have some very, very good relationships with the social workers that are currently care coordinators. I feel they have a lot more knowledge in terms of care packaging people being moved into accommodation.
- I think it's important that we all understand our limitations. I can't expect to take the lead on everything just because I'm a psychiatrist, my social work colleague or another colleague will have different experiences and knowledge to offer and could be better placed to make decisions on behalf of someone.

Managers
Health &
Social Work

- social workers come away from university seeing the whole situation, the connection between a person's needs and those of their carer...
- You get people making very sensible but complicated conclusions from assessments because they're considering the whole rather than the individual part. You know, it's a great difference when talking with social work colleagues outside of Salford who aren't part of an integrated team and there's very much a separateness...

Social Care Institute for Excellence (SCIE)
(Research Briefing May 2012)

Joint & Integrated Working between health & social care
service: 30 year overview (UK)



Is it Working?

Significant overlap between positives & negatives

• Positives

- ✓ Commitment from staff
- ✓ Aims and directions
- ✓ Carers & Service Users involvement
- ✓ Rising demand for services, coupled with the need to reduce public expenditure provide
- ✓ Compelling arguments for greater
- ✓ collaboration in the UK
- ✓ Provision of intermediate care
- ✓ Structurally integrated services
- ✓ Use of pooled budgets.

• Negatives

- ❑ Services need to be defined by service users & may differ from
- ❑ policy and practice imperatives
- ❑ crucial aspect of understanding the effectiveness of joint or integrated services
- ❑ The evidence base remains less
- ❑ than compelling
- ❑ Consists of small-scale evaluations of local initiatives
- ❑ little attention been paid to exploring the effectiveness of this approach, for service users and carers or
- ❑ for the organisations providing services