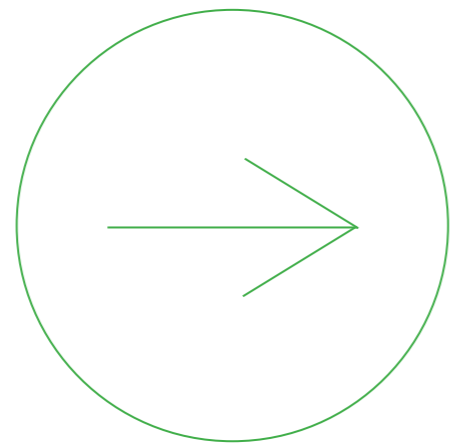




FUTURE RECYCLING ROOM & A FIXING
PACKAGE FOR EXISTING ONES

HOW CAN WE
HELP & ENCOURAGE
PEOPLE TO RECYCLE
MORE & BETTER ?

WE STARTED OUR
PROJECT BY INTERVIEWING PEOPLE



WE GOT OVER 100 ANSWERS

THE RESULTS OF INTERVIEWS

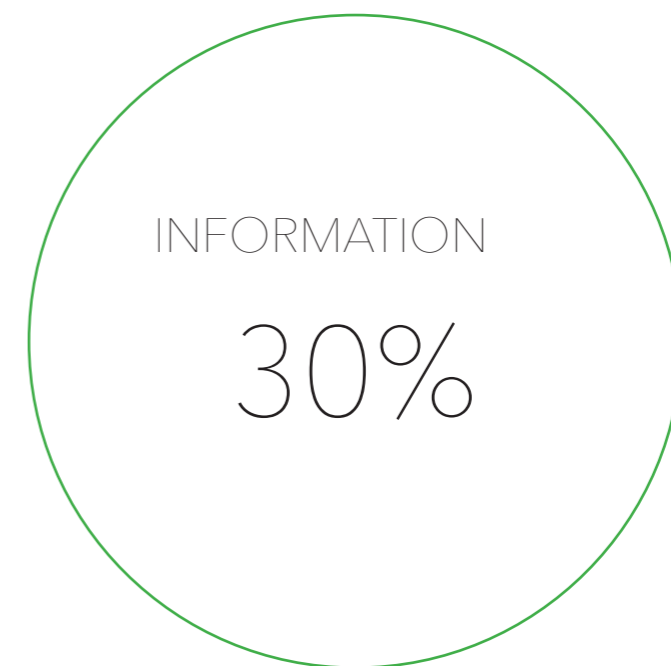
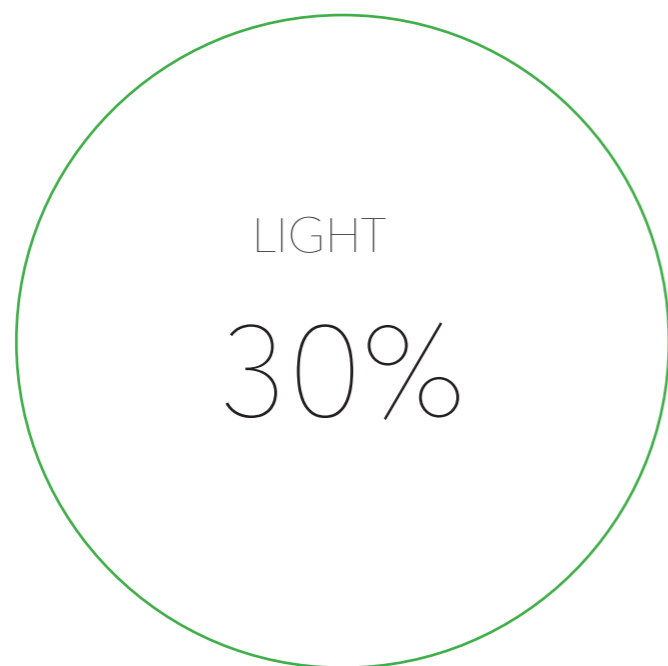
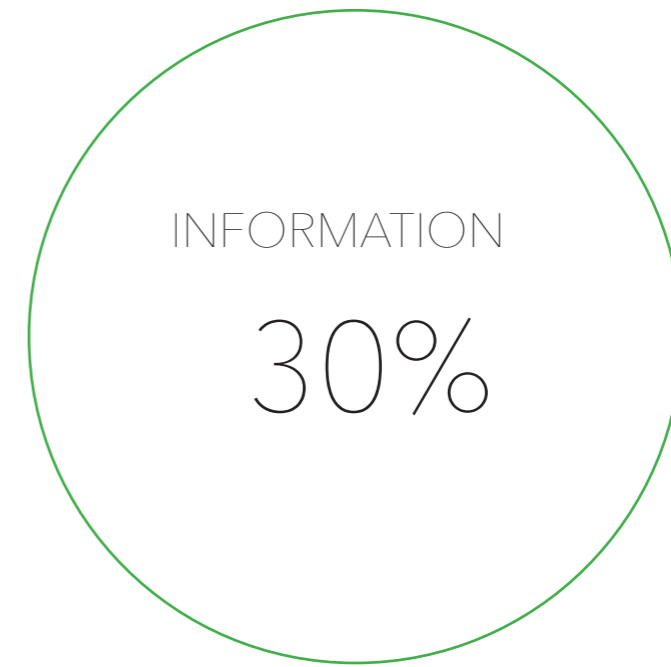
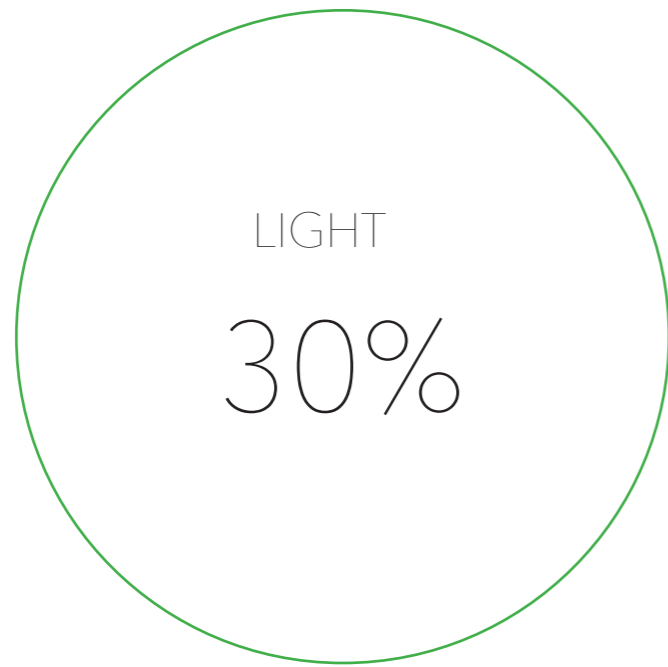
AGE RANGE 19 - 68 YEARS

30% OF RESPONDENTS WERE FEMALE

30% OF RESPONDENTS WERE MEN

SHORTCOMINGS WHICH WE FOUND

PEOPLE WANTED MORE



BASED ON THE INTERVIEW RESULTS WE
WANTED TO TO PICK UP FEW ELEMENTS
FOR THE PERFECT RECYCLING ROOM

OUR THOUGHTS & IDEAS FOR THE PERFECT RECYCLING ROOM

HYGIENE

No touching

The opportunity to wash your hands

Clean place - you don't have to see the garbagebins



BRIGHT

You can see clearly

A place with good lighting - more daylight



TECHNOLOGY & SAFETY

Doesn't need to use the key
--> doors will open when you
go close

Have the option to lock the
doors



KNOWLEDGE

Knowledge where
to put all the stuff

A new perspective
for signboards



WE ENDED UP MAKING TWO DIFFERENT CONCEPTS

ONE: fixing package for the existing sheds

The fixing package will include the elements that are missing in the existing sheds, such as lighting and hygienia

TWO: whole new shed model with a smart recycling wall

CONCEPT ONE fixing package for the existing sheds

————— a roof panel lighting that brings smooth led light all around the room as there would be daylight 24/7

————— a hygienic module which contains hand disinfecting towels, trash bin and a scent machine that will automatically freshen the room

————— better information which includes clear symbols and pictures what goes where

————— bright colors that make remembering easier (f.e. children and the elderly)

CONCEPT TWO a whole new shed model

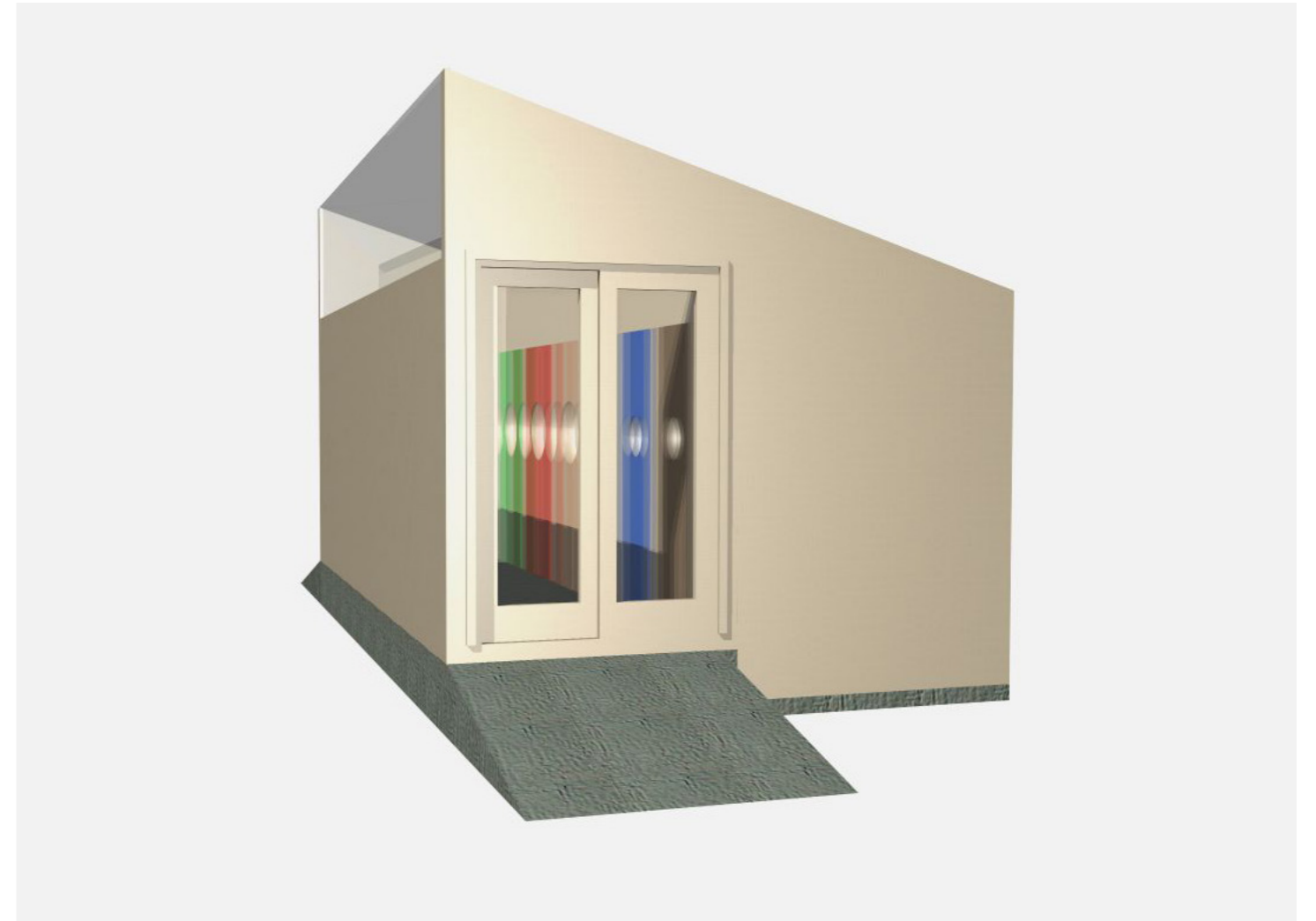
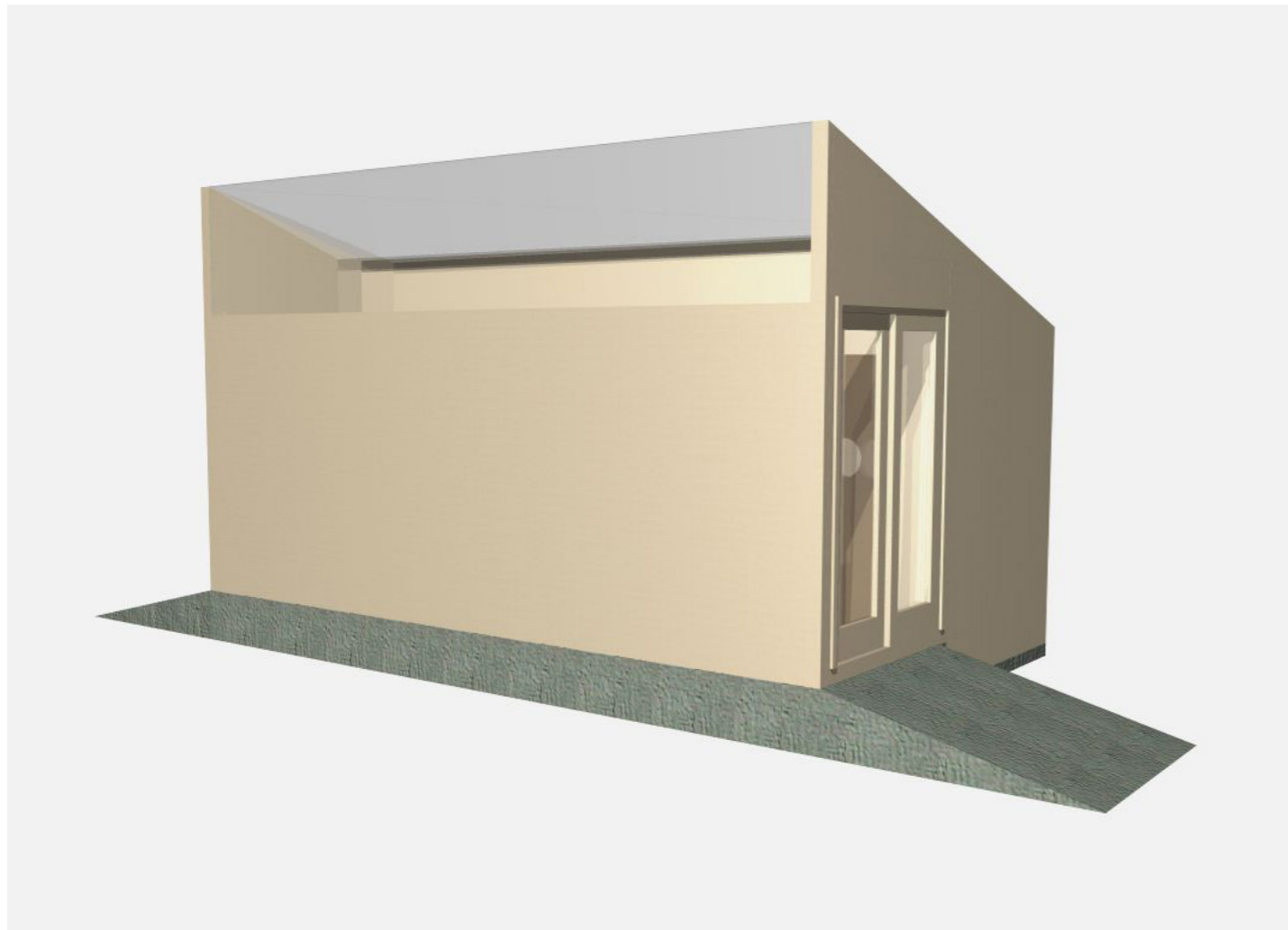
technology the doors will open automatically when you go close

a hygienic module which contains hand disinfecting towels, trash bin and a scent machine that will automatically freshen the room

better information which includes clear symbols and pictures what goes where

bright colors that make remembering easier (f.e. children and the elderly)

CONCEPT TWO FUTURE RECYCLING ROOM

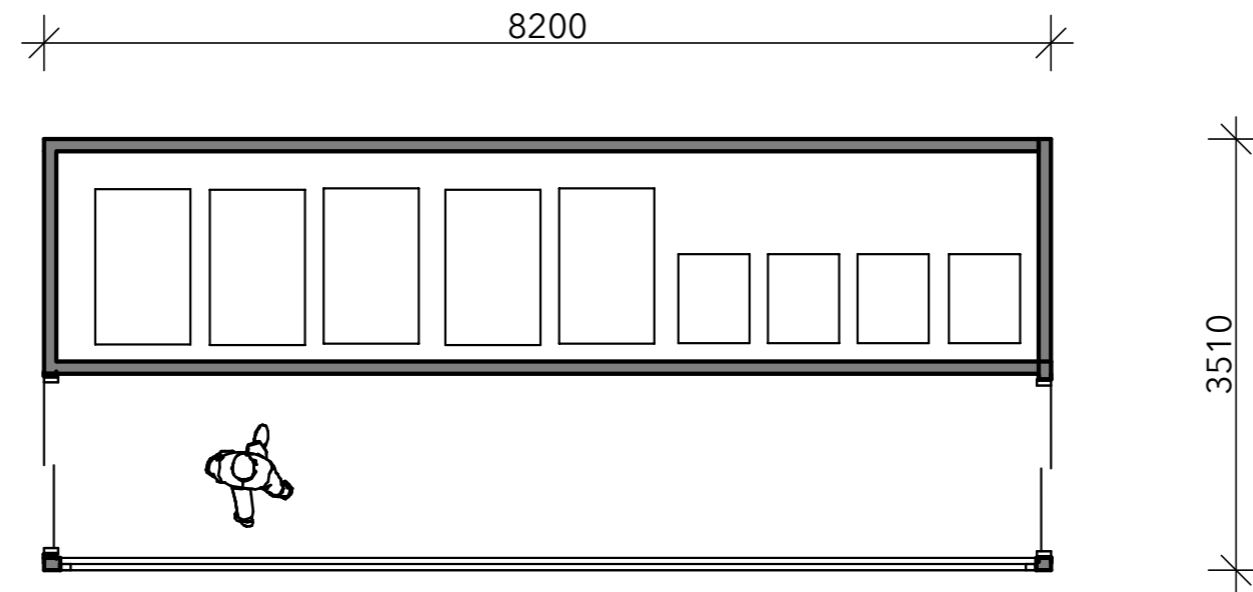
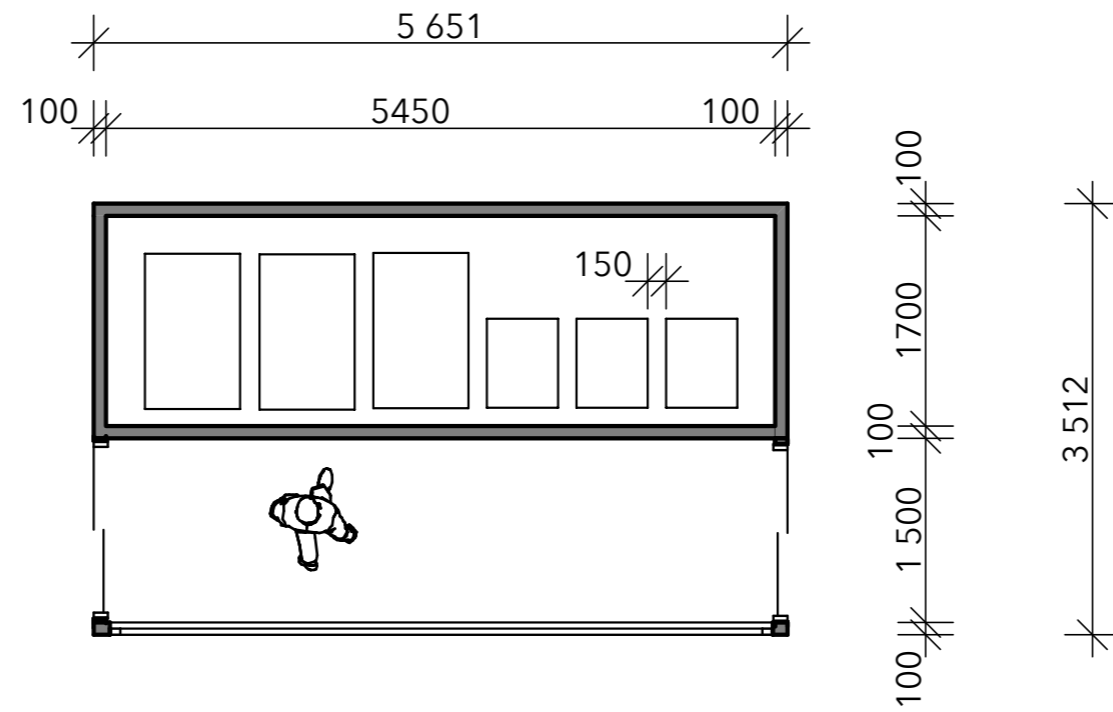




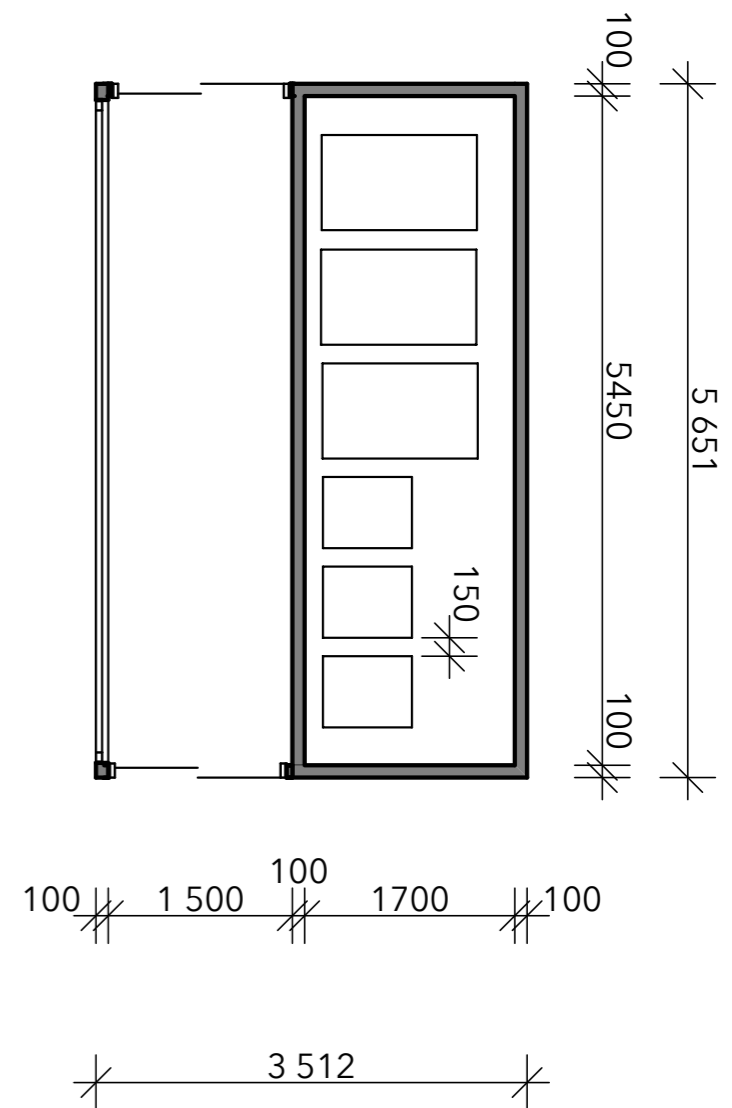
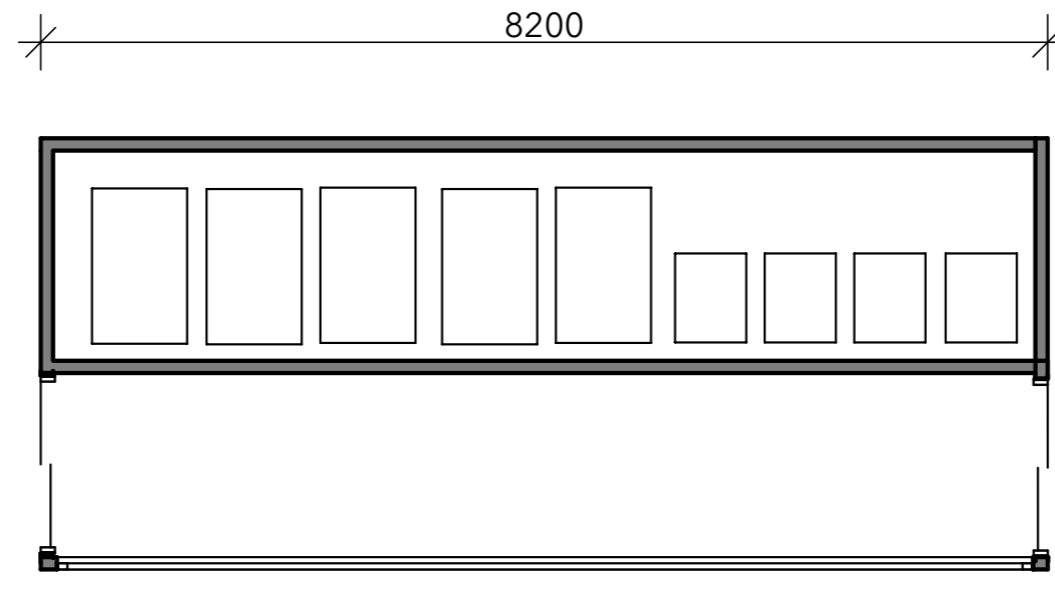




THOUGHTS
ABOUT
DIMENSIONING
AND
FLOOR PLANS

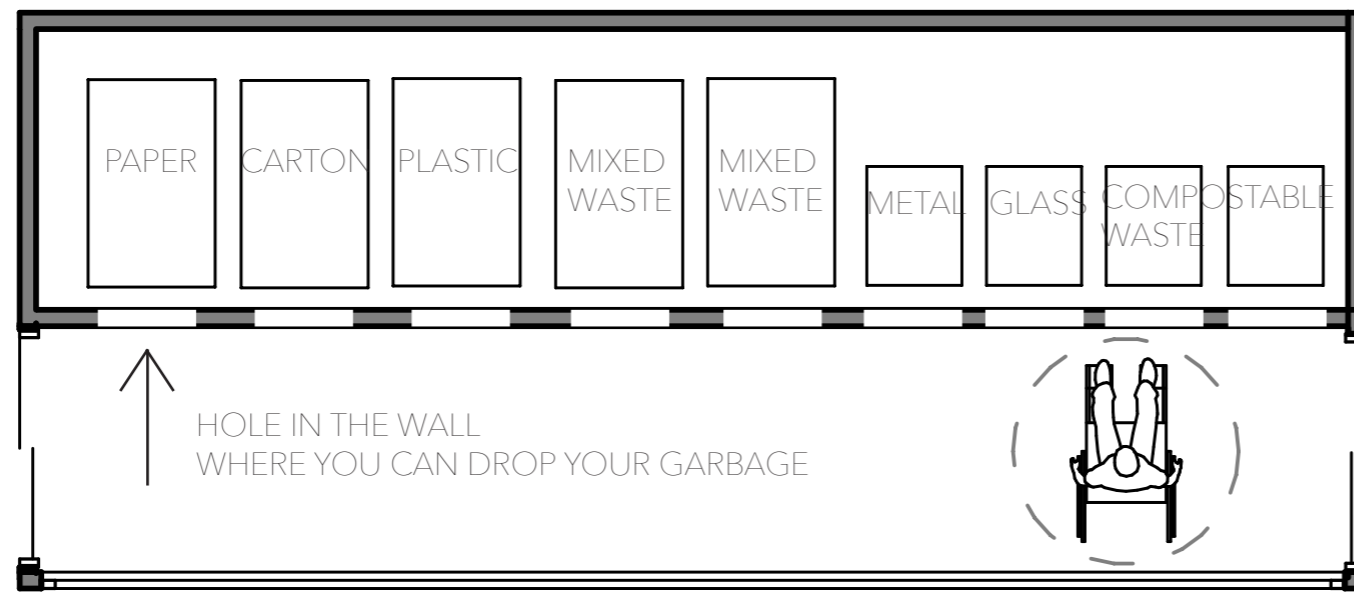


ESIMERKKI
SIJOITTELUSTA



L&T SIDE

TIP-UP DOOR



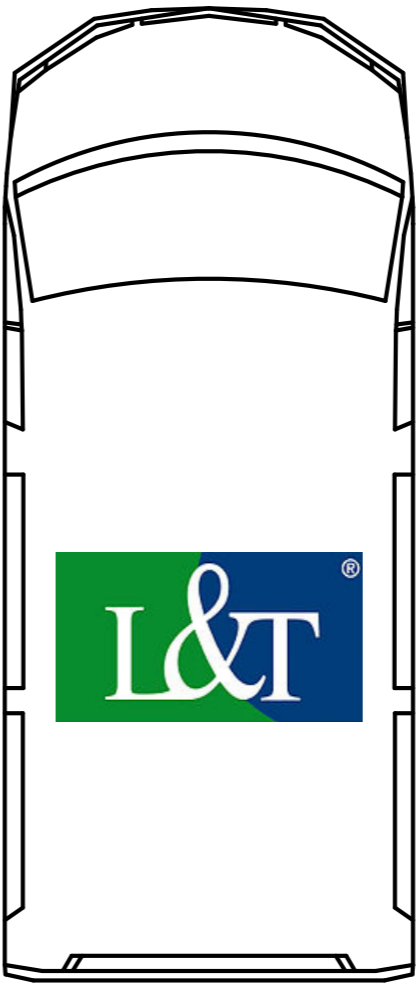
← ENOUGH SPACE FOR WHEELCHAIRS

← GLASS DOOR

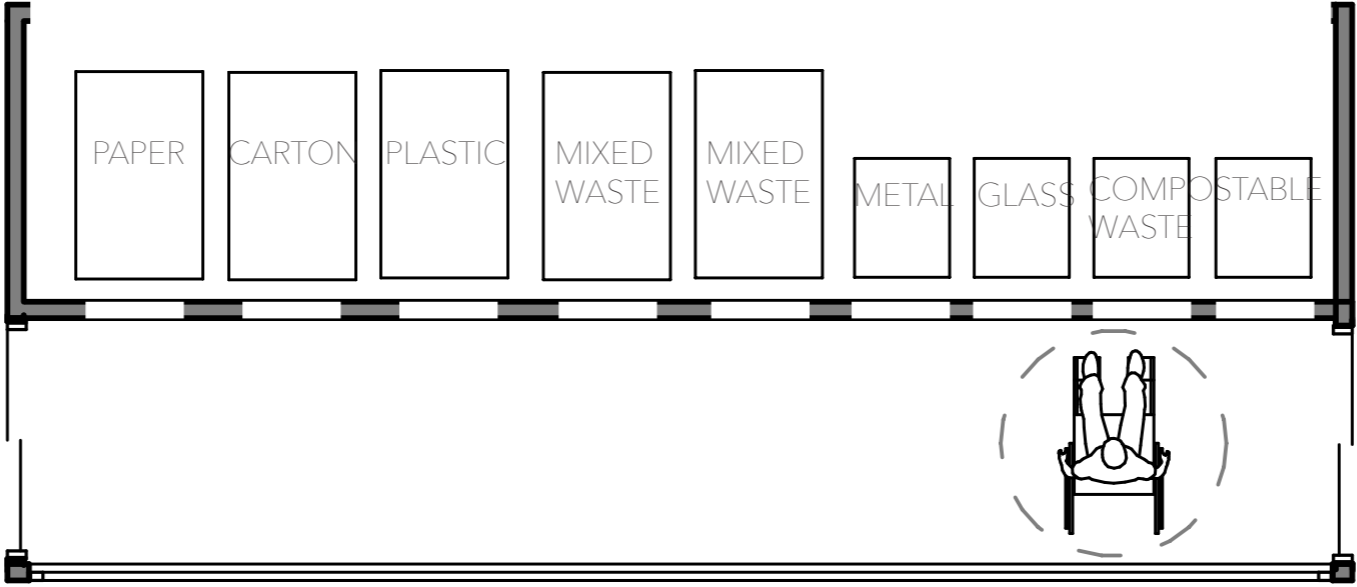
GLASS WALL

CUSTOMERS SIDE

L&T SIDE

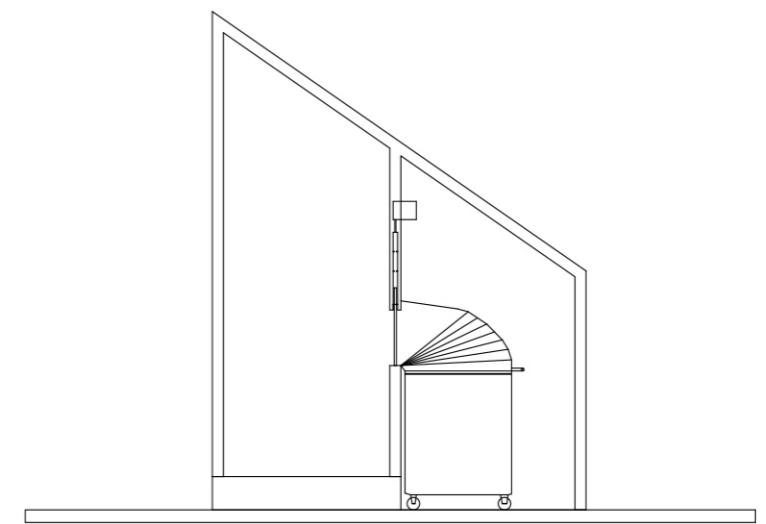
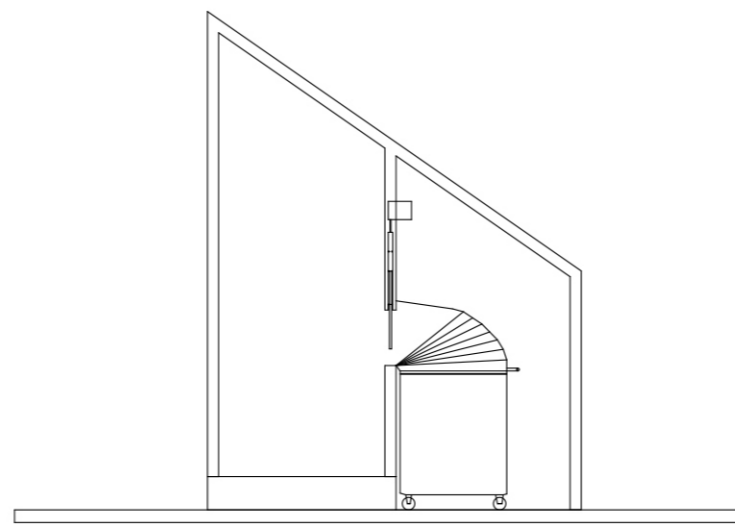
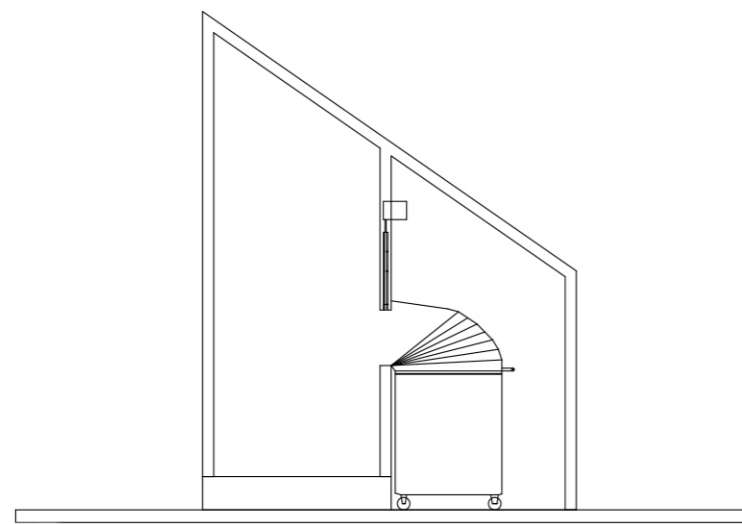


↓ TIP-UP DOOR
OPEN

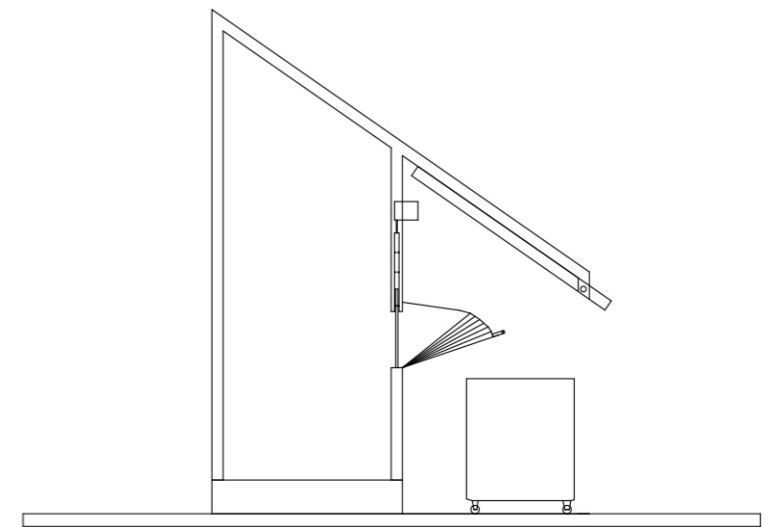
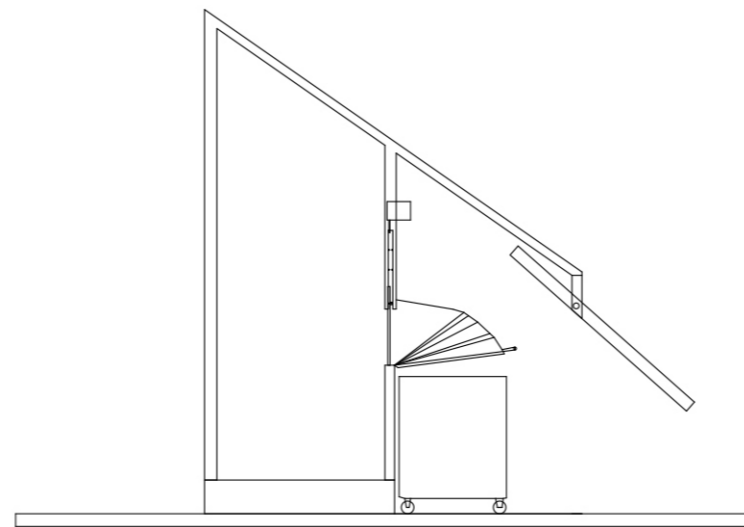
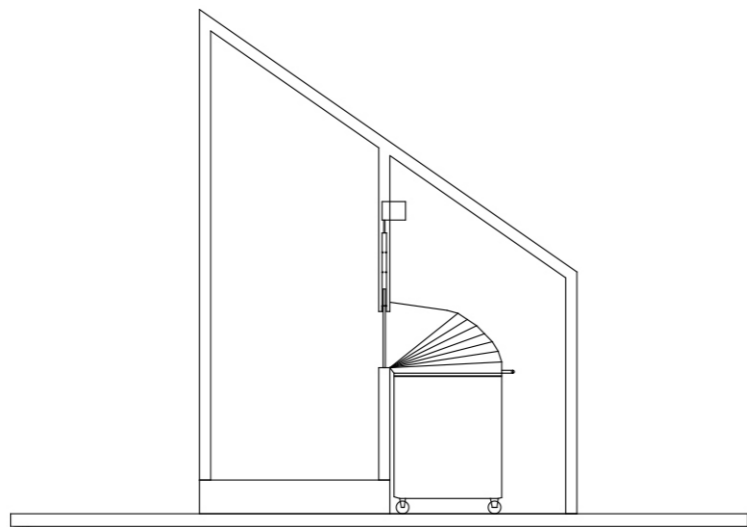


CUSTOMERS SIDE

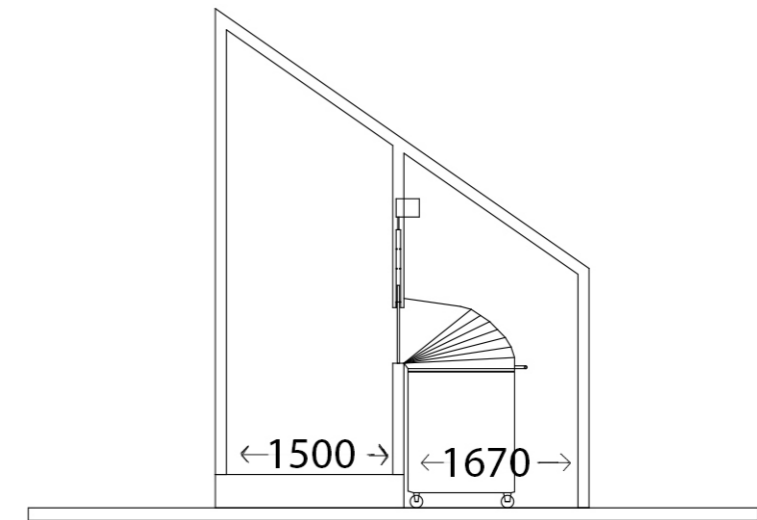
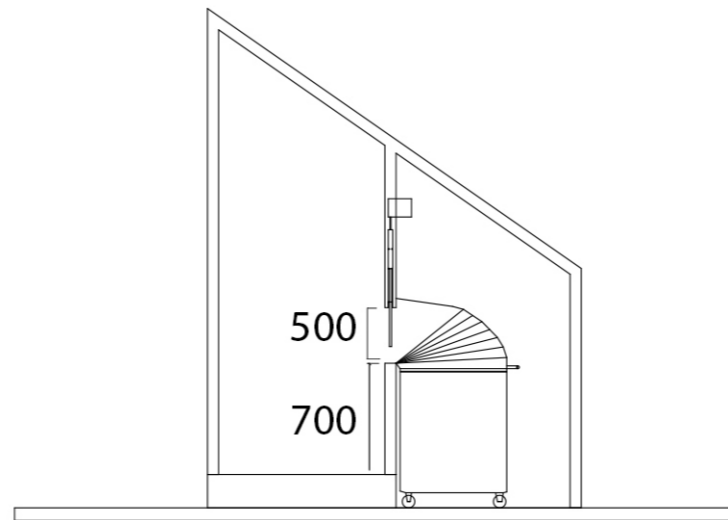
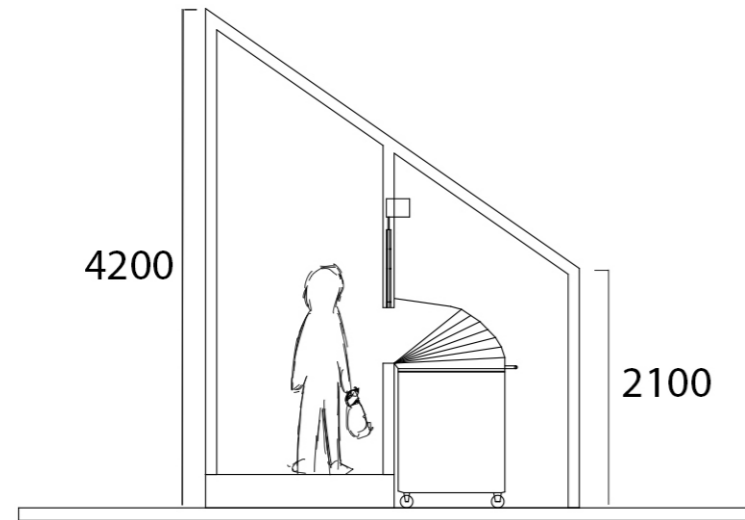
SIDE PROJECTIONS WITH AN INNOVATIVE TUBE SYSTEM



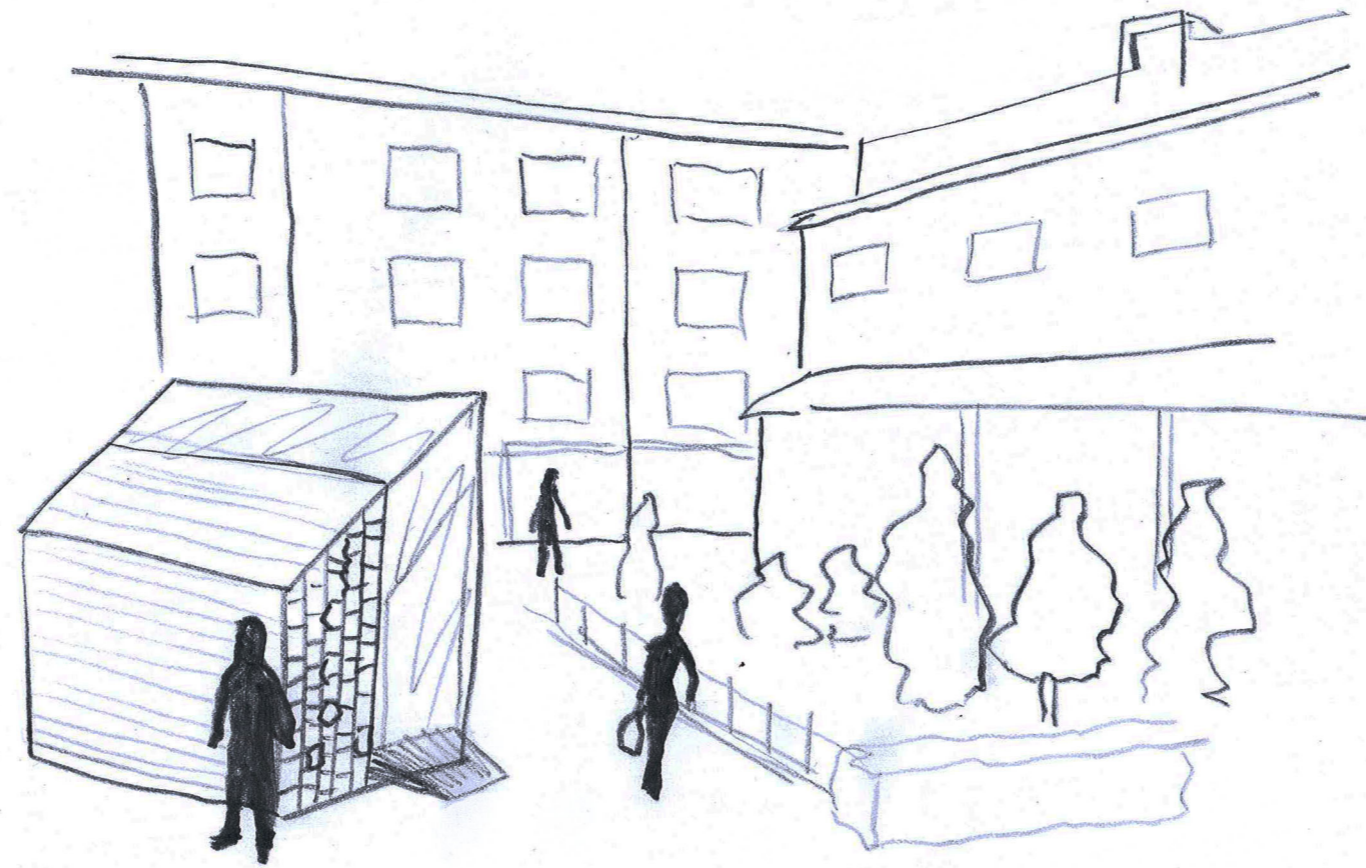
THE TUBE SYSTEM IS EASY FOR THE L&T EMPLOYEE

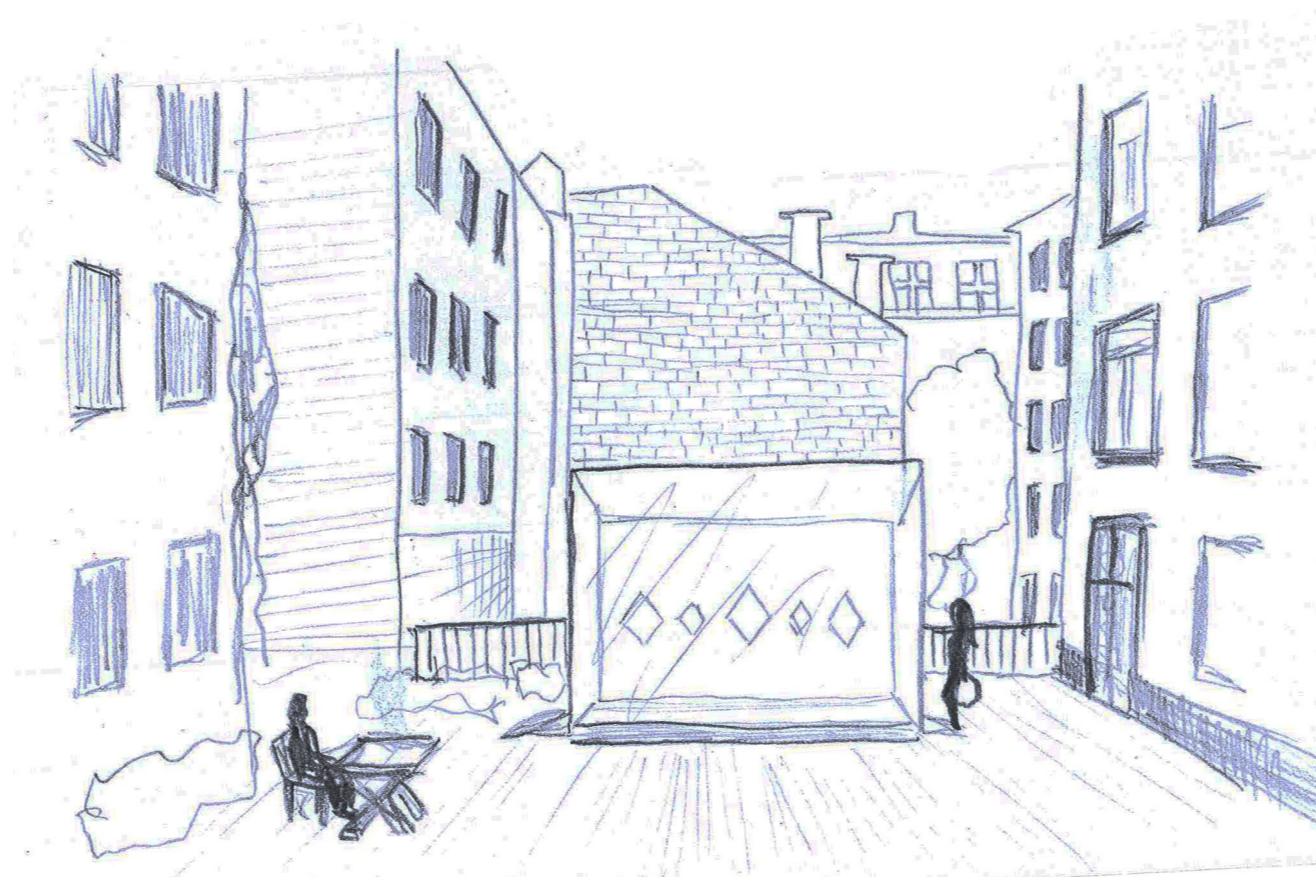


THE TUBE SYSTEM WITH MEASUREMENTS

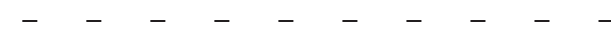


FIRST SKETCHES



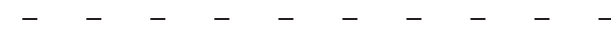


AUTOMATIC



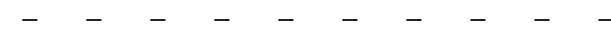
OPENING SYSTEMS FOR THE LIDS

HYGIENIC



HAND DESINFECTING TOWELS
NO TOUCHING

INFORMATIC



DIGITAL INFORMATION SCREEN / BOARD

LIGHTING



LED- LIGHTING, MORE LIGHTING SOURCES