

INNOVATION PROJECT 2014

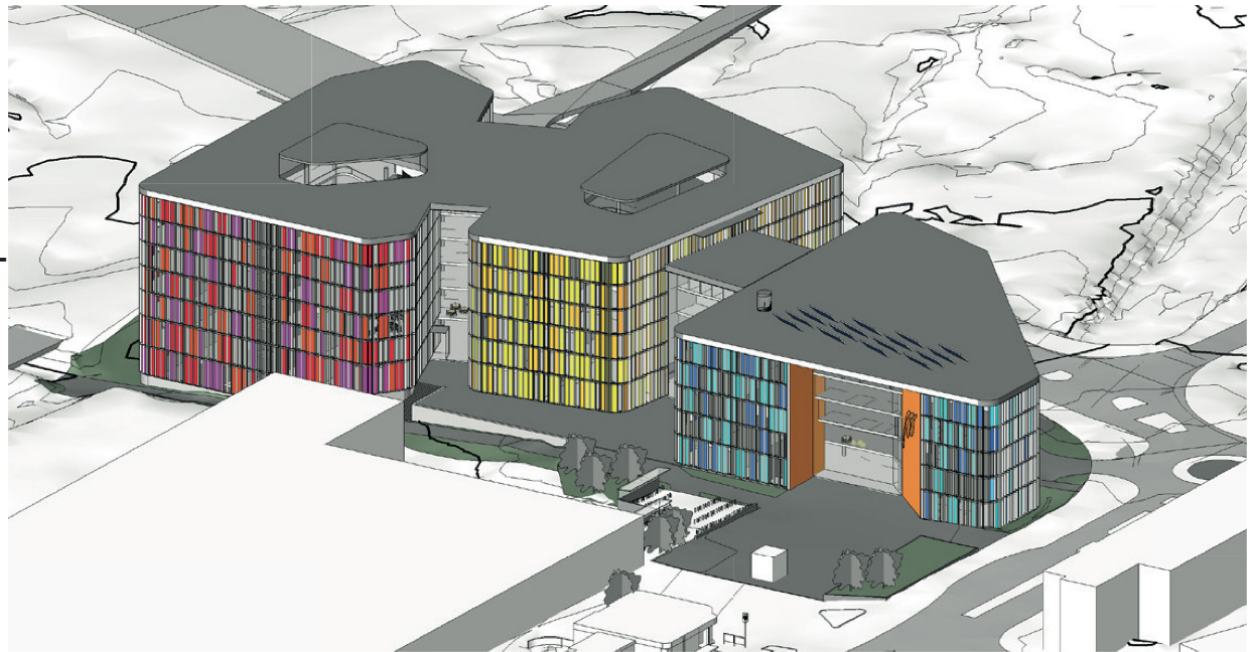
METROPOLIA CAMPUS - CREEK
9.10.2014

Julia Turunen - Merja Mähönen - Tero Pennanen

How the creek of Myllypuro should be taken under the consideration in planning the campus area?

MEETING WITH
METROPOLIA CAMPUS
TEAM

Relaxing
Phenomenal
Togetherness
Applied physical education
Working with special groups like physi-
cally impaired children etc.
Art therapy
Learning
Garden therapy



FROM THE BEGINNING



View across the street from the site.



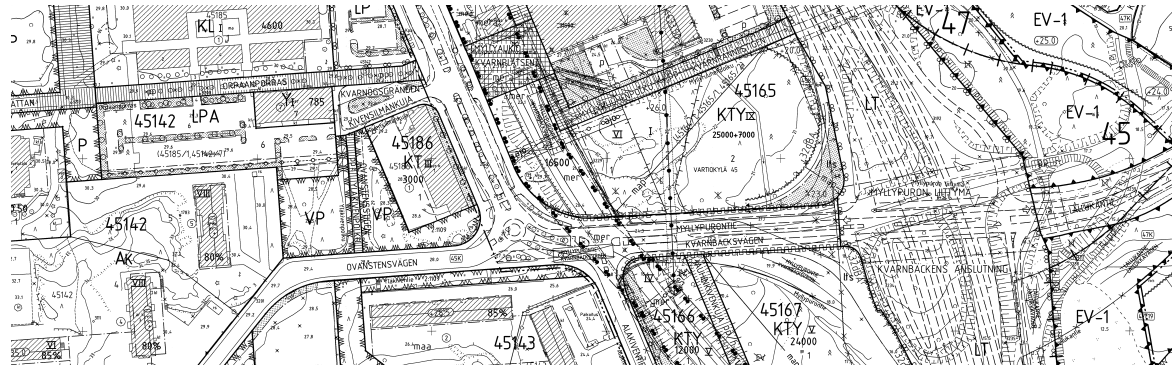
Intersection facing to the site.



Wood on the site.



Creek of Myllypuro.



Layout drawing.

Why we decided to make a roof garden?

There is lot of square meters top of the buildings which could be used somehow. Nature is really important for us, mentally and physically as well.

As a students we would like to find different kind of places for learning, relaxing, eating, sleeping, hanging around and spending time with friends.

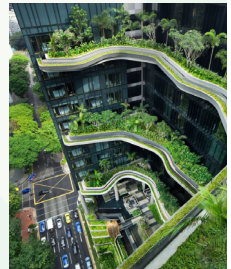
We also now that there is lot of buildings to be used from nine to five. Why don't we try to change that one? Maybe we could rent spaces and get some incomes too.

When construction work will start, the first thing will be that existing forest will be tipped over .



Current and common situation

WHAT WE WOULD LIKE TO SEE IN FUTURE



POTENTIAL **BENEFITS** OF ROOF GARDEN

1 Reduces storm-water runoff as part of sustainable drainage systems.

3 Reduces energy use.

5 Lessens the urban heat island effect.

7 Improves air- and water-quality.

9 Creates amenity space.

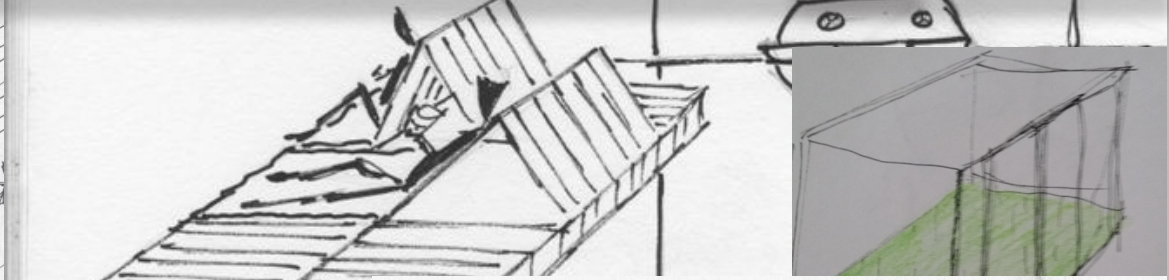
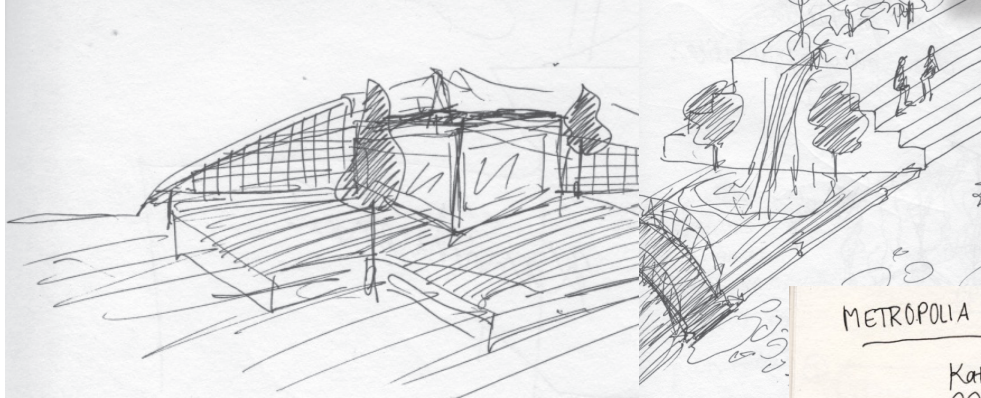
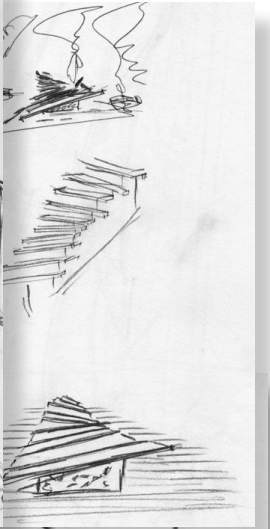
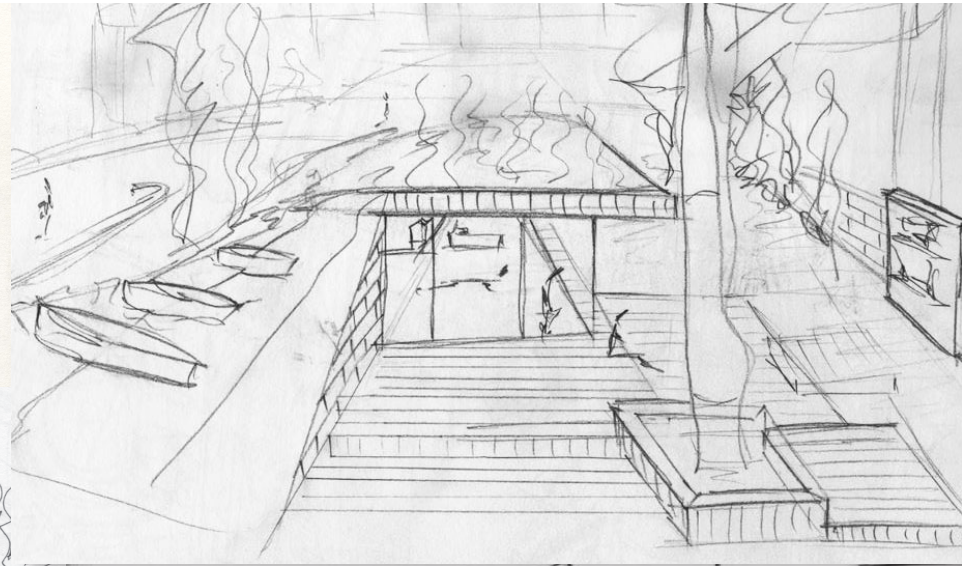
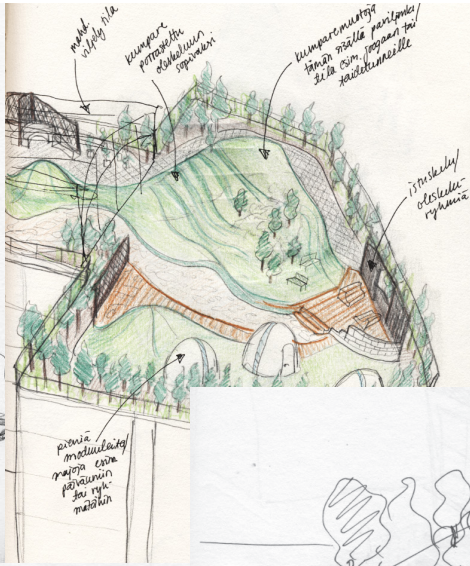
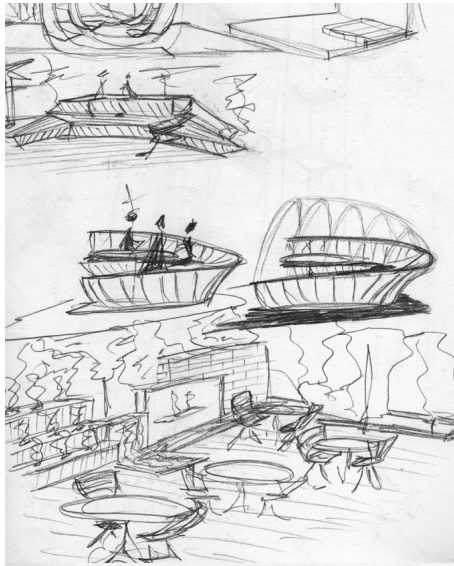
2 Increases roof lifespan.

4 Helps with climate change.

6 Increases biodiversity.

8 Reduces sound transfer.

PRELIMINARY SKETCHES



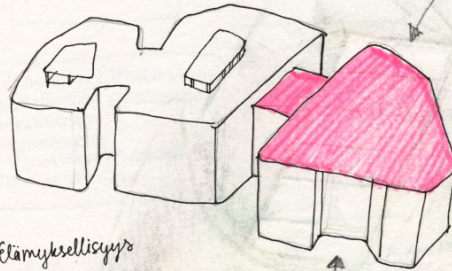
- opiskelupaikat
- valaistus
- rakenne
- mitä kasvillisuutta
- filitset eri alueista
- puro + allas

• katto 800 m² terassille

METROPOLIA MYLLYPURO CAMPUS

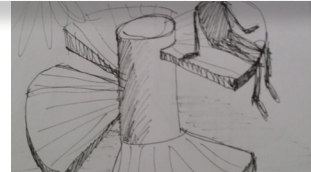
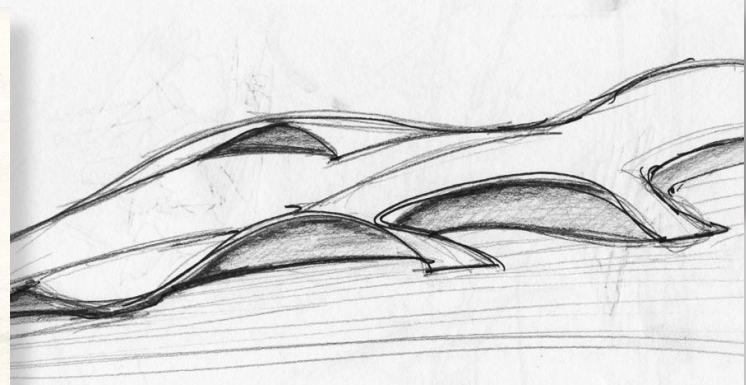
Kattoterassi
mmmm

→ oppimista, rentoutua, erityisryhmien kanssa työskentelyä



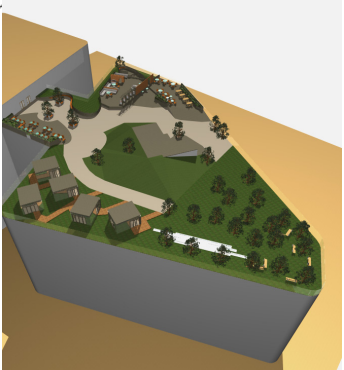
- Elämyksellisyys
- Yhteiskunnallisuus
- Ilmangaitellisuus

pääsisäänkäynti



FLOOR PLAN

with five different sections



- 1. Entrance to rooftop
- 2. Berlin
- 3. House-L
- 4. Cabins
- 5. Garden

Entrance to

ROOFTOP

The distant horizon, the expansive panoramas, five different zones and the clean air are the main features of this roof top.

Depending on the building location with four seasons, this roof top can create such an effect of depth that the exterior space itself comes to be seen as part of the interior. The climatic conditions also affect the choice of vegetation and materials.

There is around 3000 m² of space and if we just want to, we could triple that amount up to 9000 m².

Entrance to

ROOFTOP



Floor plan



View from the entrance to roof.



View from the terrace over the doorway.

Working title

BERLIN

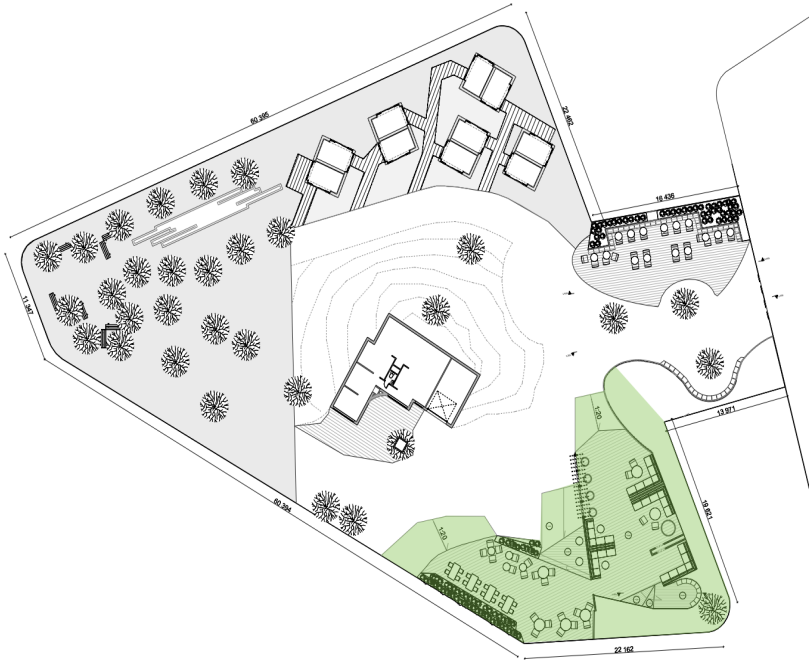
We wanted to create the space with sofas and fireplace. Time to learn or relax. Having party and meet people.

Wood is the preferred option on this type of terrace, for both the furniture and exterior finishing, as its surface is resistant, durable and non-slip.

Architectural elements such as pergolas, brick walls and vertical differences are major resources when it comes to designing this part of roof top. The arrangement of these elements makes it possible to play with the compositions created by the shadows over the course of the day.

Working title

BERLIN



Floor plan



Large area for studying, eating, relaxing etc.



Deck over the terrace. The view of the sky takes on great importance and a very intimate setting can be created.

Working title

HOUSE-L

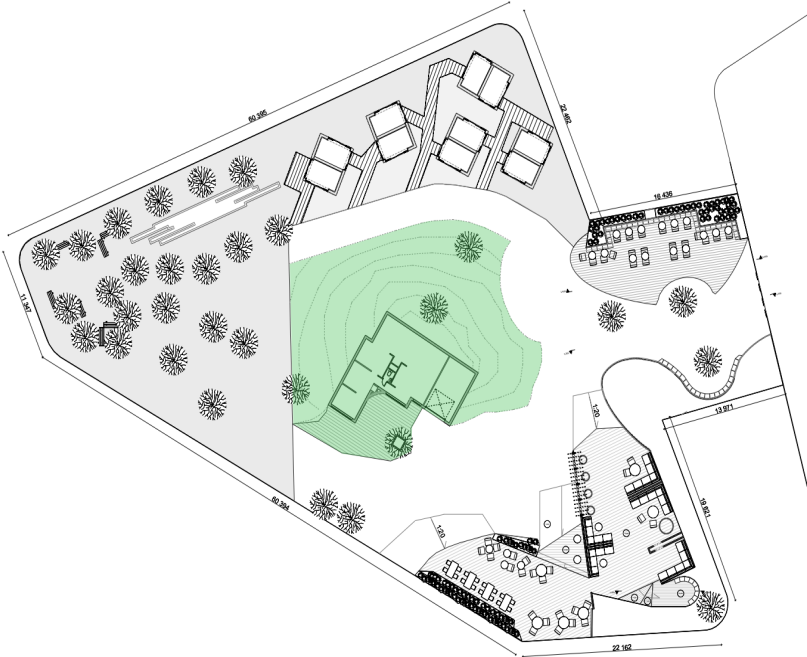
This is our hide and seek house. It is covered by the grass and trees with undulating terrain. A building typology with no clearly defined purpose.

The refined addition can act as guest house, studio, meeting place, sauna or learning environment. A retreat and place of inspiration, the house infuses a sense of enjoyment into its role as both work place and recreative.

A multifunctional, semi-open plan establishes an immersive and protective interior landscape, where outermost rooms overlooks the terrace from a sheltered vantage point.

Working title

HOUSE-L



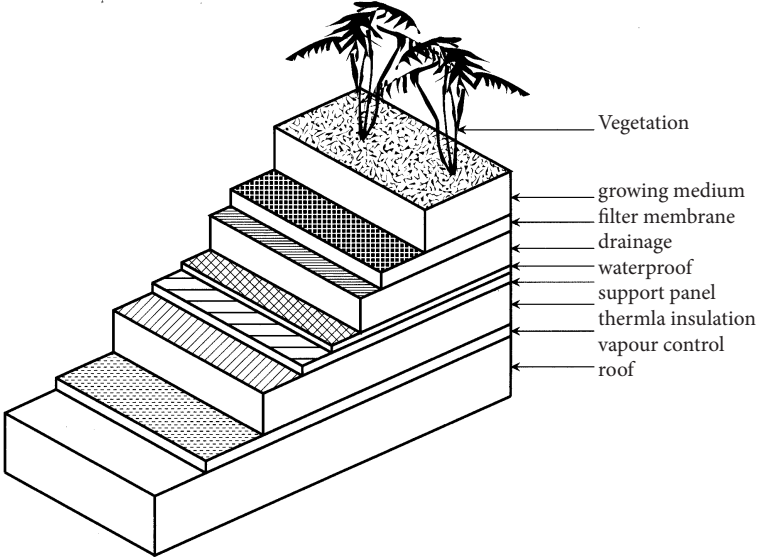
Floor plan



Undulating terrain over the dwelling.



Sketch from the "porch".



Structure section.

Working title

CABINS

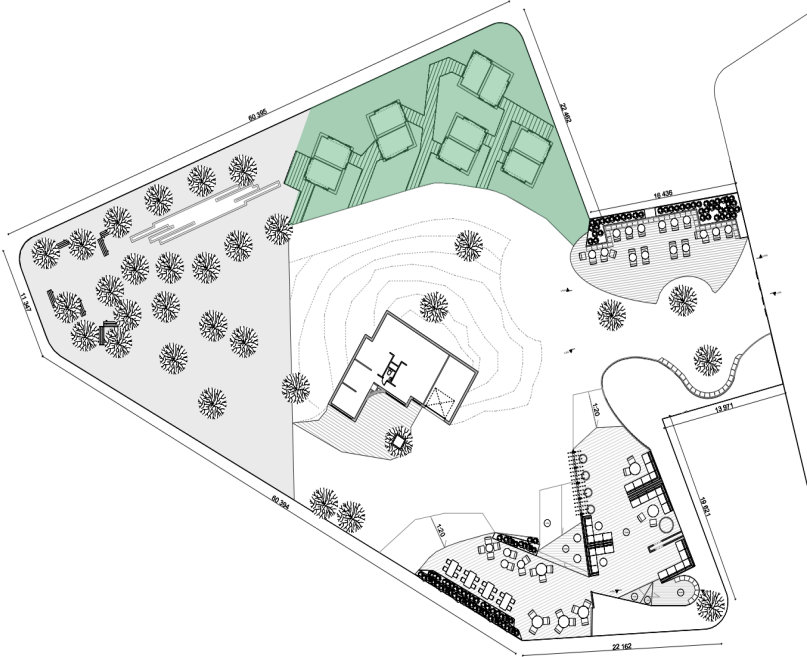
We wanted to create individual spaces for students. Sometimes you would like to have a privacy with your work group or sometimes you would like to have a nap during the day.

This part of roof allows it, the dwelling can serve as a veritable vantage point. A simple platform with few furnishings is sufficient to set off the panoramic views of the landscape.

Duckboards will lead you to the cabin which combines materials such as stone, wood and metal.

Working title

CABINS



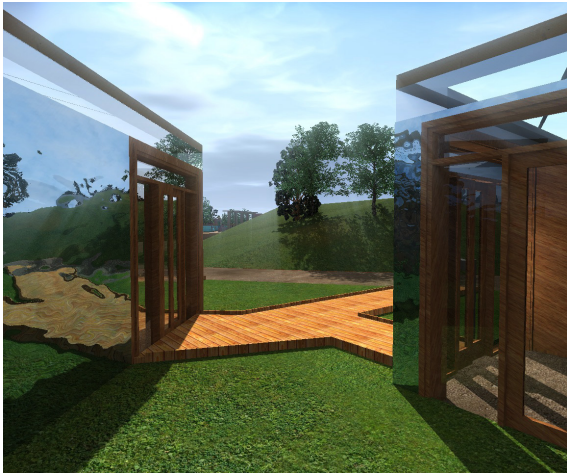
Floor plan



Generic view of the cabins layout.



View from the inside out.



Under the

APPLE TREE

Our keyword on this part was quiet, relaxation, being out of reach, getting back to basics, feeling human again.

Vegetation plays a major role on this area. Not only the plants chosen for the terrace itself but also the lushness offered by the surrounding natural landscape.

The possibility of putting plants and small trees to the roof creates a very close relationship with nature.

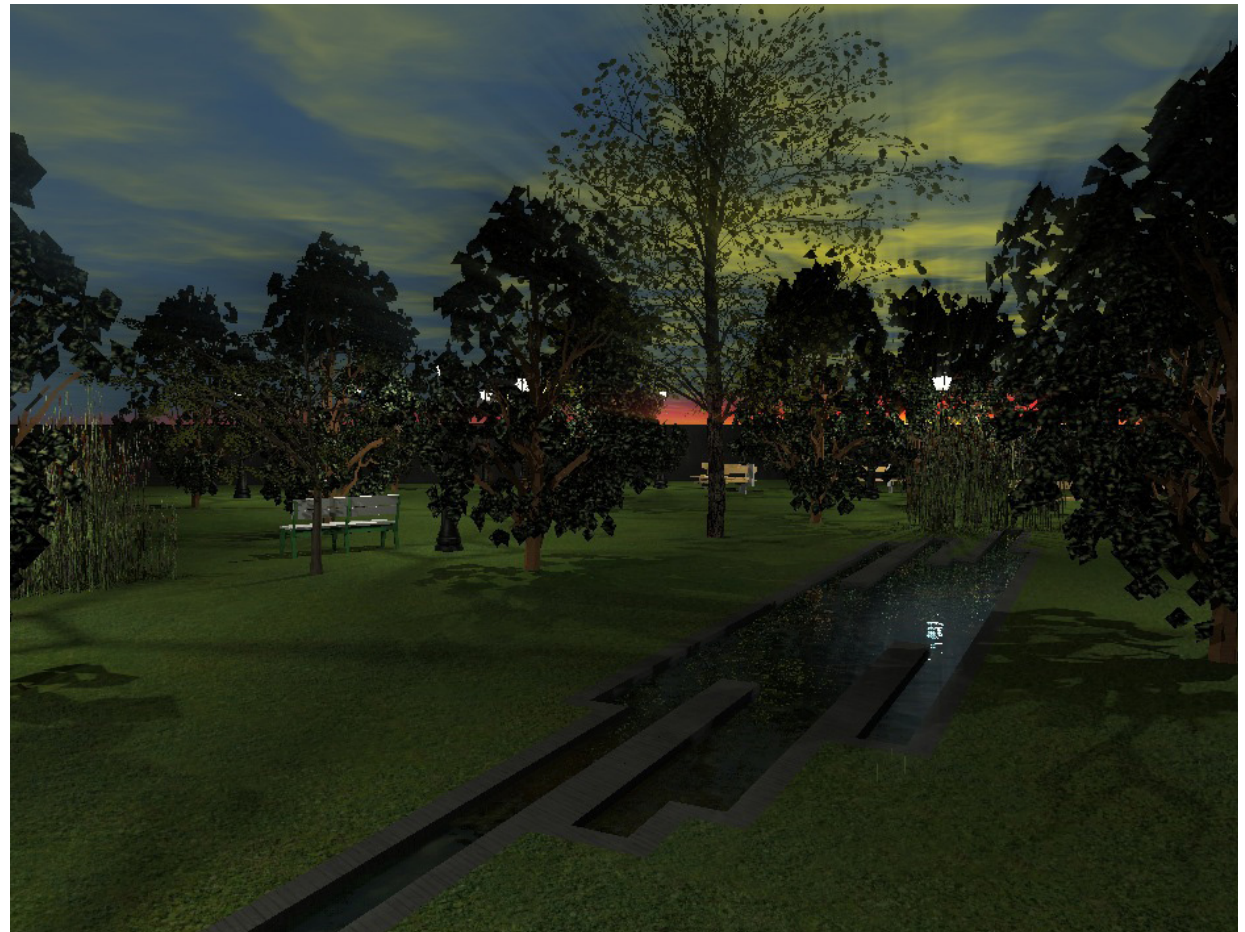
This part is mentioned to calm you down. There is water element, there is trees. Then, all of a sudden, the sky becomes a mass of stars. The world is more beautiful.

Under the

APPLE TREE



Floor plan



Sunset on the garden area.



Sunset on the garden area.

GREENING OUR ROOFS

For the first time in the history of humankind, more people live in cities than in the country. As more people flock to the city, green space continues to be gobbled up by new urban and suburban development. Vast expanses of asphalt roofing and hardscape surfacing bake under summer sun as air conditioning units run full blast. Energy consumed to offset this heat island effect contributes to the expulsion of carbon dioxide gases into the atmosphere. Repercussions include a thinning of the ozone layer, perpetuating this cycle of global warming.

Bringing plant life back into the city will put a clog in this cycle as vegetation naturally cools the air and photosynthetic processes convert carbon dioxide to oxygen.

In general, green roofs can be installed on any type of deck but green roof design is still in its early stages.

A number of municipalities, such as Toronto, Canada, have implemented bylaws that require the implementation of green roofs on any new construction project. While these initiatives present a step in the right direction, the building industry is still a long way off from understanding the full extent of green roof implementation and management. Architects and designers must work in consortium with agricultural specialists to develop innovative approaches and design guidelines for rooftop growing.

THANK YOU.



Julia Turunen
Interior designer - SIO, student
+358-44-511 6395
julia.turunen@metropolia.fi



Merja Mähönen
Designer, student
+358-40-736 2609
merja.mahonen@metropolia.fi



Tero Pennanen
Interior designer - SIO, student
+358-50-359 7474
tero.pennanen@metropolia.fi