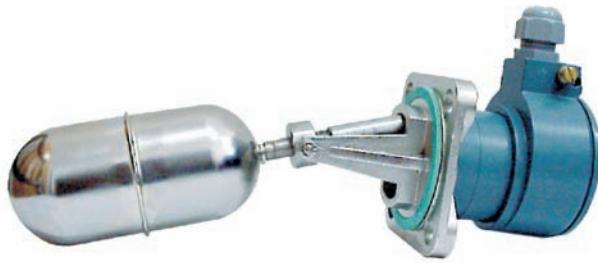


## ELECTRIC TWO-TERM LEVEL CONTROLLERS ERH-...-06



- efficiency
- flexibility
- reliability
- easy operation
- PRS certificate
- certificate for food industry  
HZ/D/1475/2007
- Germanischer Lloyd certificate
- Lloyd's Register LR Type certificate
- Det Norske Veritas certificate
- American Bureau of Shipping

THE LEVEL CONTROLLERS IN MARINE VERSION ARE DESIGNED FOR SIGNALLING OF LIQUID LIMIT LEVELS OR TWO-TERM LIQUID LEVEL CONTROL IN OPEN AND CLOSED PRESSURIZED TANKS, IN NON-EXPLOSIVE ATMOSPHERE. THE CONTROLLERS CAN OPERATE ON SHIPS IN MARINE CLIMATE. THE UNITS ARE PROVIDED WITH CERTIFICATES ISSUED BY PRS, PZH, GERMANISCHER LLOYD, LLOYD'S REGISTER, DNV, ABS. THE CONTROLLERS CAN OPERATED IN AGGRESSIVE LIQUIDS NOT REACTING ON 1H18N9T STEEL.

### TECHNICAL DATA

| Parameters                            | ERH-01-06  | ERH-02-06                                 | ERH-03-06  | ERH-04-06  |
|---------------------------------------|--|---|--|--|
| Measuring range                       | 10; 20; 30mm   | 10; 20; 30mm                              | 100...400mm<br>50...250mm                                    | 32...1,350mm   |
| Repeatability                         | ±15%   | ±15%                                      | ±15%; ±5%  | ±15%; ±2%  |
| Mass                                  | 2 kg   | 2.2 kg                                    | 2.4 kg   | 3.3 kg   |
| Static pressure of the medium         | 4 MPa  |   |  | 1.6 MPa  |
| Permissible temperature of the medium | 250°C  | 200°C                                     | 250°C  |  |
| Ambient temperature                   | -25°C...+70°C  |   |  |  |
| Casing protection degree              | IP 66  |   |  |  |
| Minimum liquid density                | 0.6 x 10 <sup>-3</sup> kg/cm <sup>3</sup>                    |   |  |  |
| Application                           | In clear fluids without impurities with constant suspensions | In impurities fluids constant suspensions | In clear fluids without impurities with constant suspensions | In clear fluids and in impurities fluids of constant suspensions |

### ELECTRIC PARAMETERS OF MICROSWITCH:

Rated voltage AC 400V, 50Hz; or 220V DC  
Minimal voltage and switching current 10V; 20mA

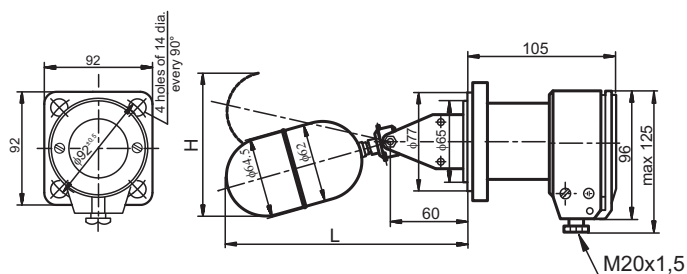
| SWITCHING VOLTAGE [V] | DC VOLTAGE            |                        | AC VOLTAGE            |                       |
|-----------------------|-----------------------|------------------------|-----------------------|-----------------------|
|                       | Switching current [A] | Switching durability   | Switching current [A] | Switching durability  |
| 48                    | 4.0                   | 0.06 x 10 <sup>6</sup> | 9.0                   | 0.1 x 10 <sup>6</sup> |
| 110                   | 1.0                   |                        |                       |                       |
| 220                   | 0.6                   |                        |                       |                       |
| 400                   | X                     | X                      |                       |                       |

Cross sections of connecting wires - for single-core wires: 1...2.5 sq. mm  
- for multile-core wires: 0.75...1.5 sq. mm

## DIMENSIONED DRAWINGS

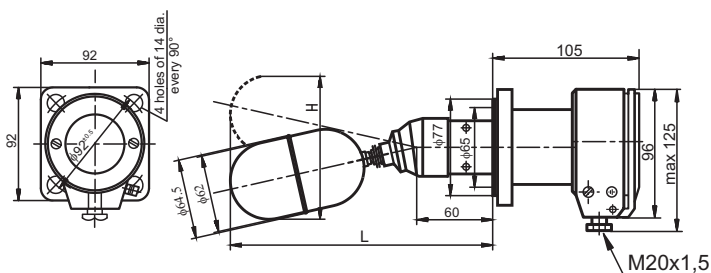
ERH-01-06

| CODE | Hmm | Lmm |
|------|-----|-----|
| - 1  | 120 | 190 |
| - 2  | 140 | 230 |
| - 3  | 150 | 255 |

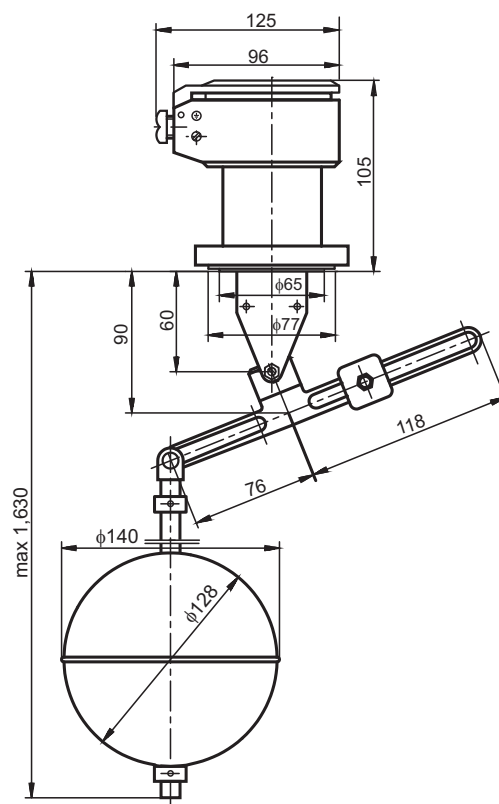


ERH-02-06

| CODE | Hmm | Lmm |
|------|-----|-----|
| - 1  | 120 | 190 |
| - 2  | 140 | 230 |
| - 3  | 150 | 255 |

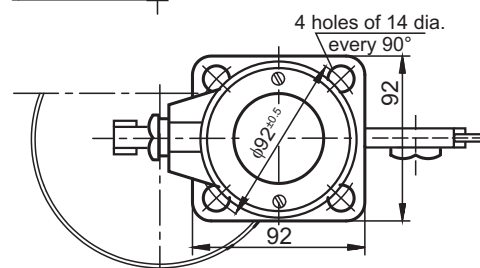
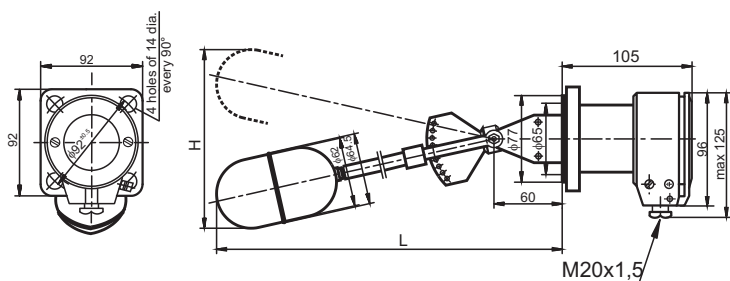


ERH-04-06

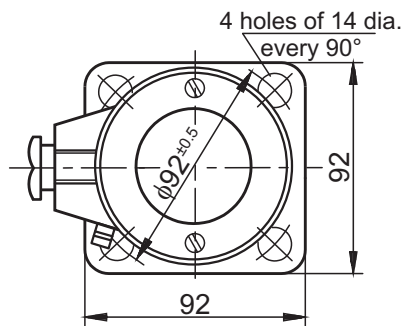
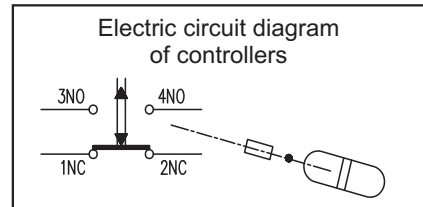
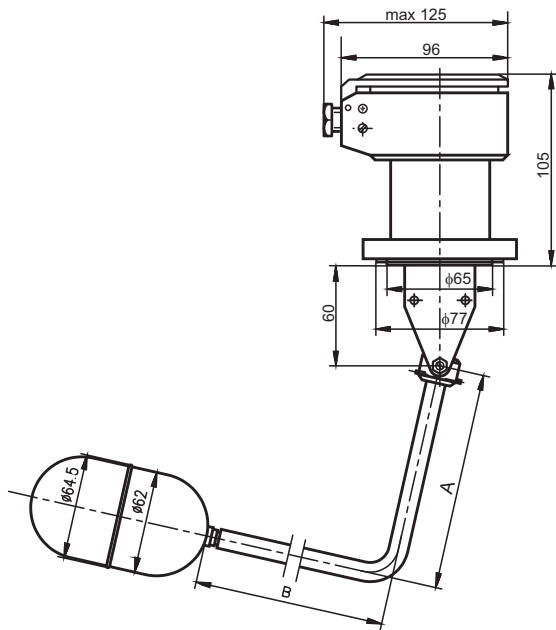


ERH-03-06

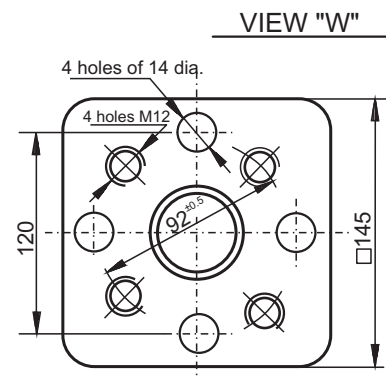
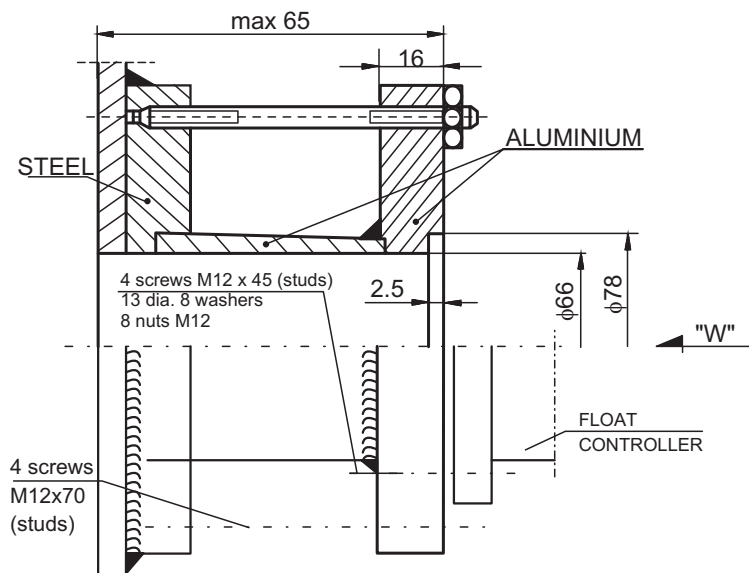
| CODE | Hmm | Lmm |
|------|-----|-----|
| - 1  | 680 | 510 |
| - 2  | 450 | 380 |



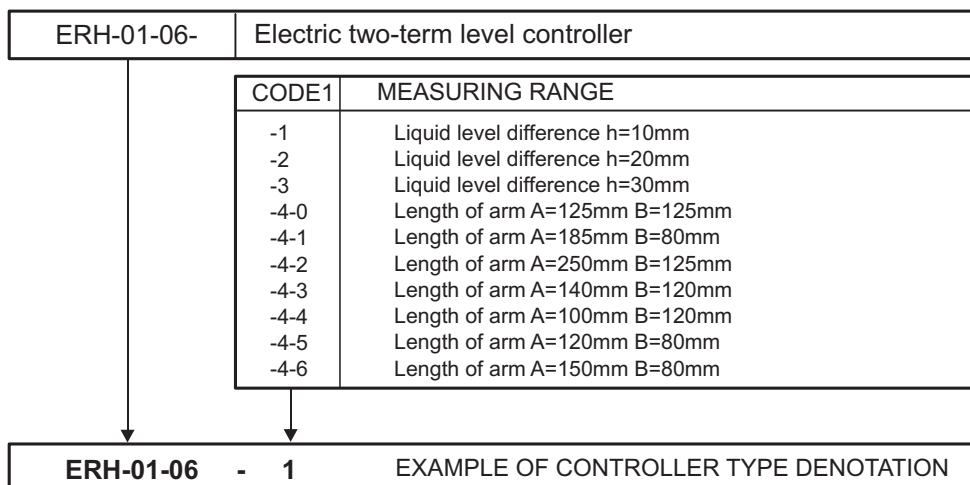
ERH-01-06-4-1  
 Electric two-term level controller  
 with curved tube dimensions: A=185, B=80



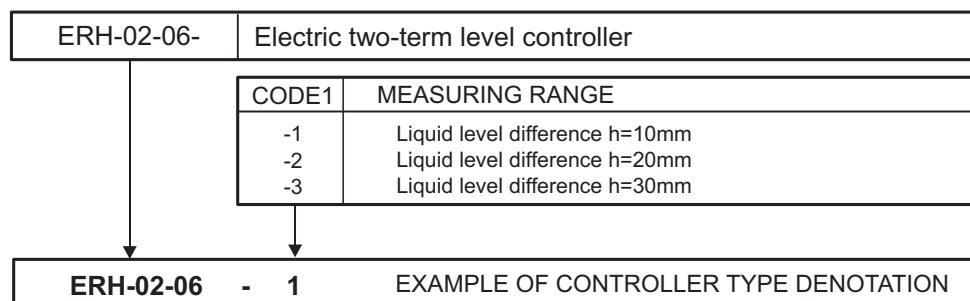
EXAMPLE OF CONNECTING STUB PIPE



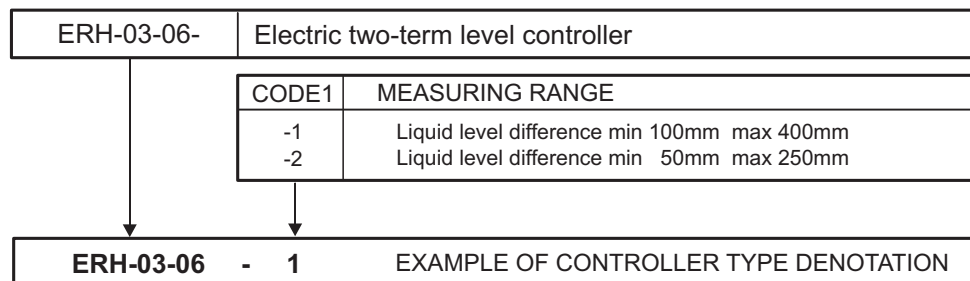
### ORDERING OF ERH-01-06 CONTROLLER



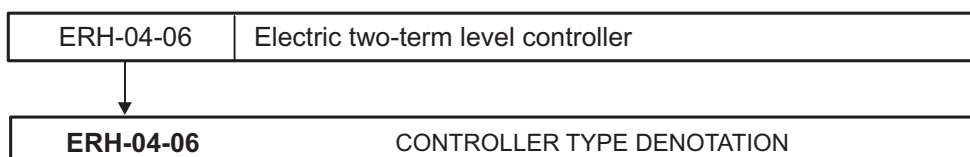
### ORDERING OF ERH-02-06 CONTROLLER



### ORDERING OF ERH-03-06 CONTROLLER



### ORDERING OF ERH-04-06 CONTROLLER



- One should place the following data in the order:
- controller type and Product Directory SWW 0918-239,
  - kind of controlled medium,
  - parameters,
  - measuring range.

The right of introducing design changes in the product, without deteriorating of its operation parameters, is reserved.