

CASE 1

Cycling and Bicycle Service in North-Haaga train station area

Iiris, Marianna, Stella
9.10.2015

The Area of North-Haaga

Area

Inhabitants

Services

The area includes loads of plants and green surroundings such as Schildt's park. Architecture dates back to 70's and the buildings represent red brick flats. The train station itself is rough concrete building with brown tiles.



Inside the train station there is a small cafeteria and toilets. Nearby are S-market, R-kiosk, barbeque, flower shop, karaoke bar, settlement house, bus stop, taxi pole, post boxes and cash machine. There's also a nursing home and a school in the region.

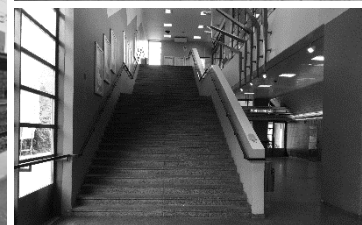
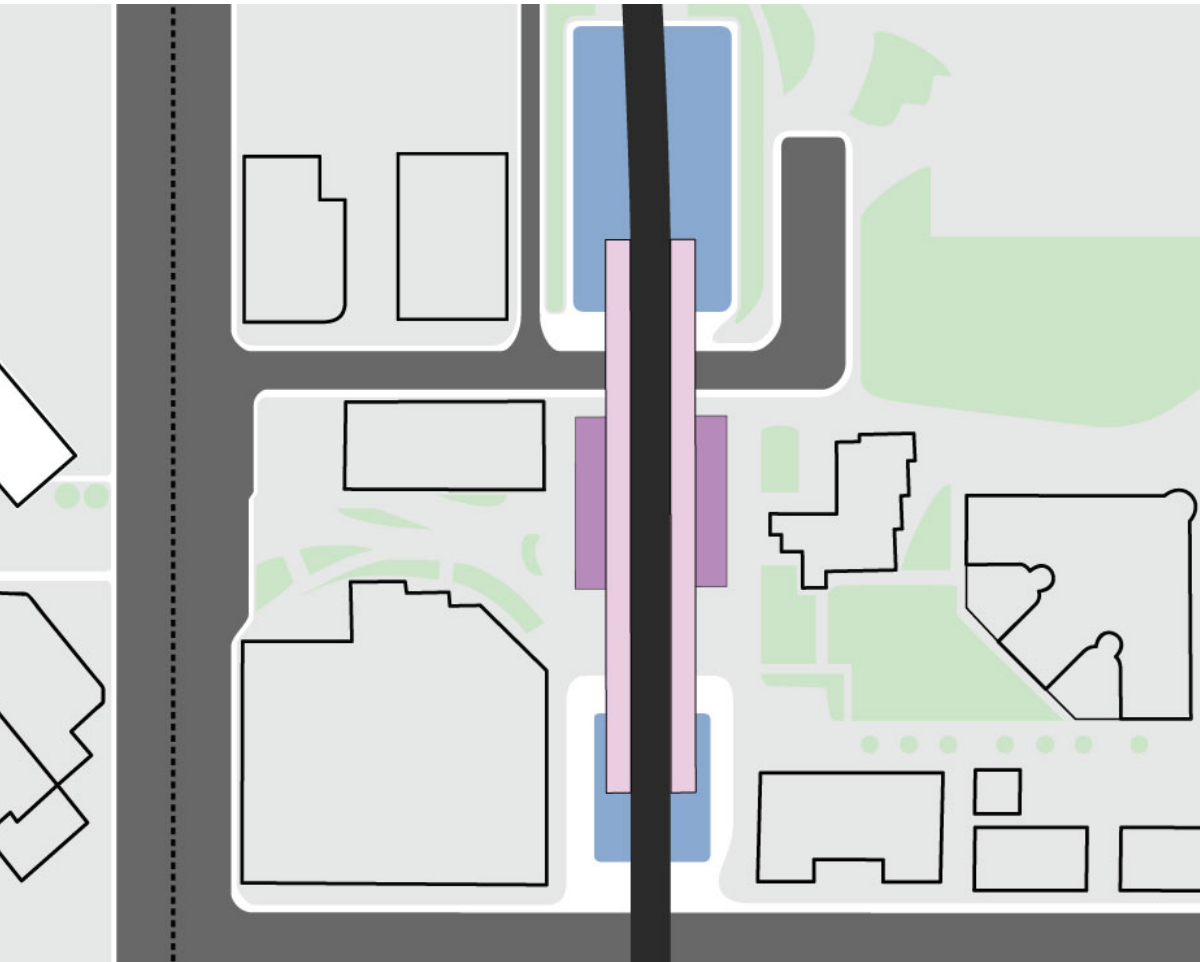


There are inhabited buildings alongsides of the train station building. School kids and commuters use Schildt's route and underpass bridge, they pass the train station daily. There are also HOAS apartments for students.



The Area of North-Haaga

Purple colored building represents the train station and blue ones are parking areas.



The User Research

Facebook open questionnaire

Current

"Awful station area"

"It echos"

"Ugly and gloomy"

Services

"Bakery"

"Flower shop"

"Kiosk"

Mood

"Fountains, plants, benches"

"More light"

"Music and birdsong"

Visual

"Murals"

"CD disks hanging from
the ceiling: tingeltangels"

"Colors and art"

What do you think about North-Haaga train station area?

What would you like to have in the station, how about the services and the over all image??

Our own observations

Daytime

- » Unpleasant
- » Cheerless
- » Passing place
- » Shady

Nighttime

- » More unpleasant
- » Gloomy & dark
- » Scary
- » Lack of people

Improvement suggestions

Necessary



Cafeteria | Kiosk



Modernizing the station building



Clarifying the underpass bridges



Camera surveillance

Bonus



Market place



Activity park



Escalators

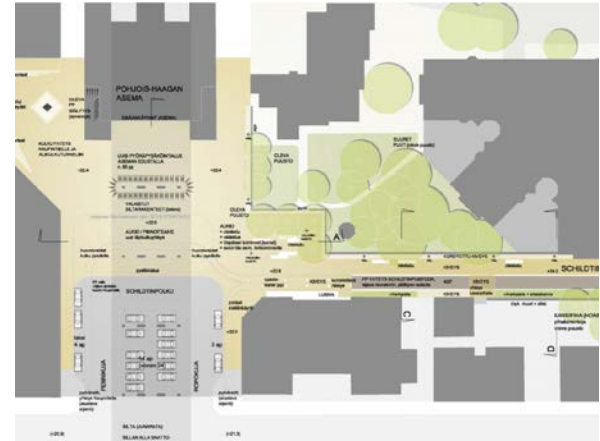


Lockers

Benchmarking

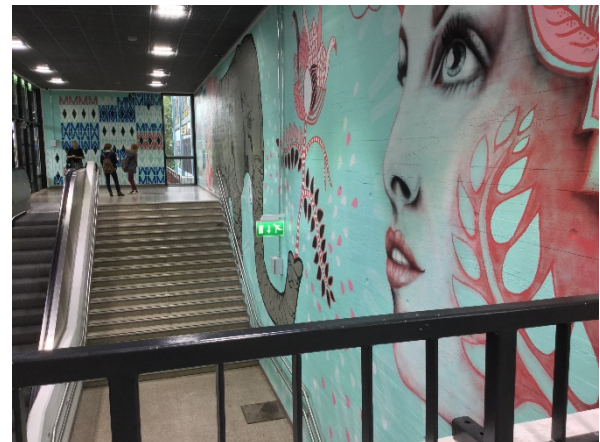
Bicycles

- » MASU PLANNING
- » Kamppi Bicycle Center
- » Malmi Bicycle Center
- » Copenhagen



Atmosphere

- » Myyrmäki train station
- » Functional marketplaces
- » Light art
- » Community Spaces



Users

- » 6-80-year-old
- » Inhabitants of North-Haaga
- » Inhabitants of neighborhood
- » Helsinki citizens
- » Users of the public transport
- » Commuters



Bottlenecks

Drunkards

Current reputation

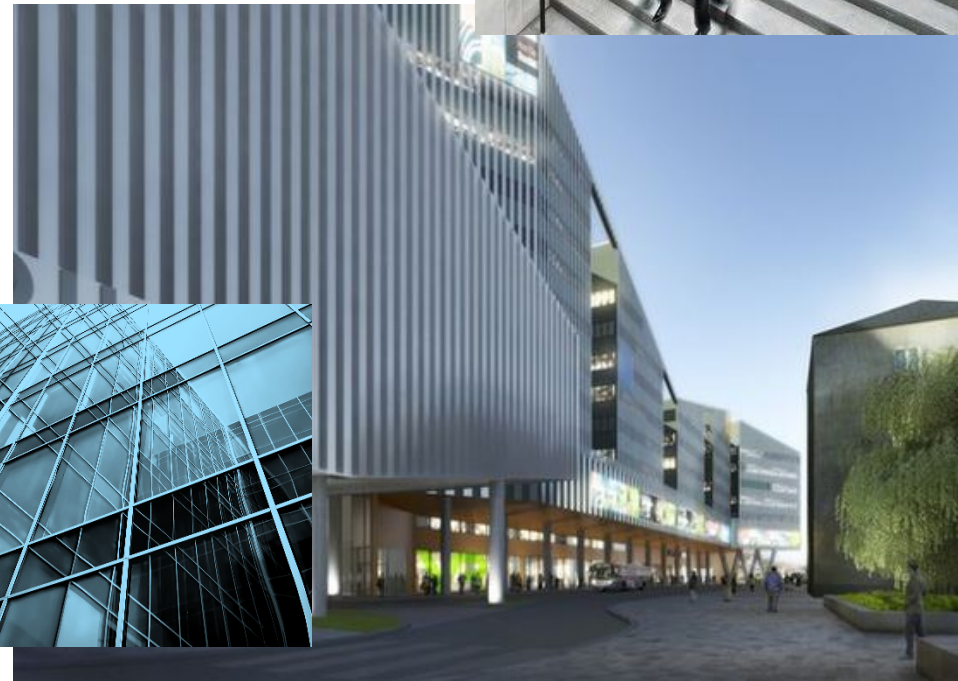
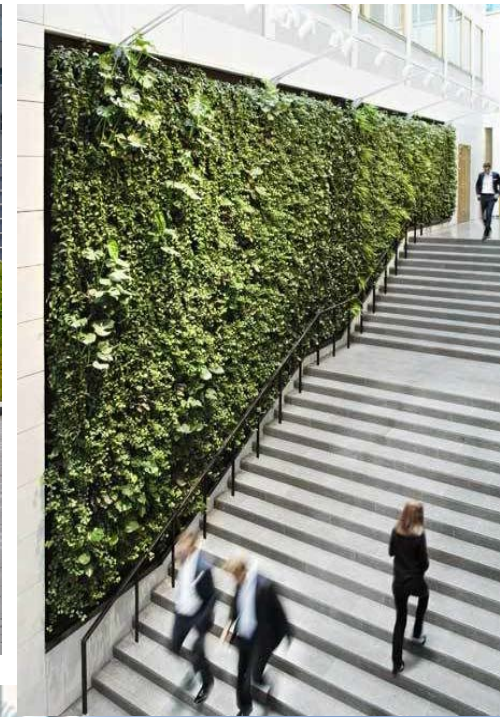
Unifying the ideas

Regenerating the area

Limited space

Maintaining of the spaces and events

Maintaining the station area pleasant regardless of the seasons



Moodboards

Concrete
Routes



The idea is to uplift the existing concrete surfaces and lit surfaces with modern light solutions.

Photograph: Roland Häberle



Clearing up the bicycle lanes and simplifying the routes.



Moodboards

Surfaces
Plantings



Our inspirations for the surfaces came from other train stations.

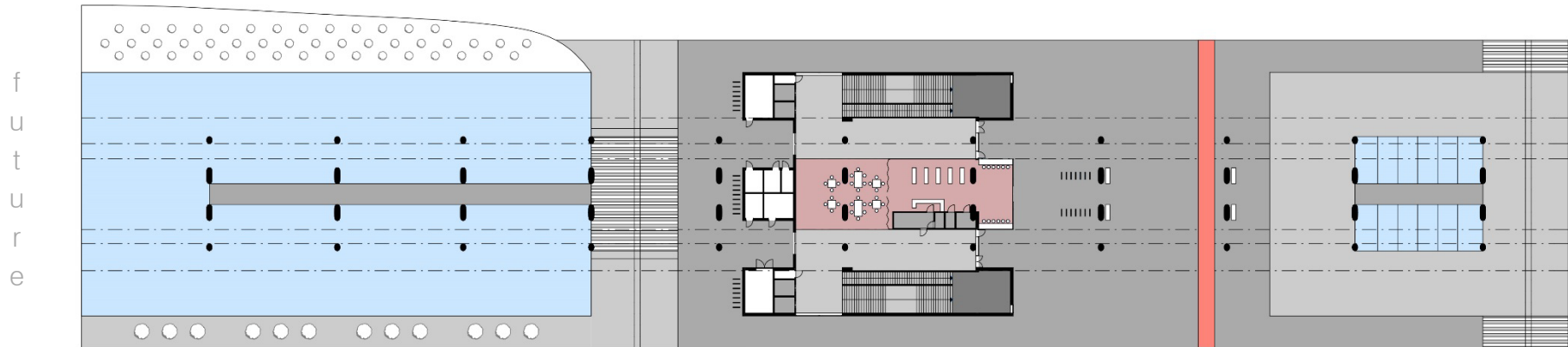


Currently plantings of the area are overgrown. There are no benches in the region. They should fit with rough concrete train station.



The Area of North-Haaga

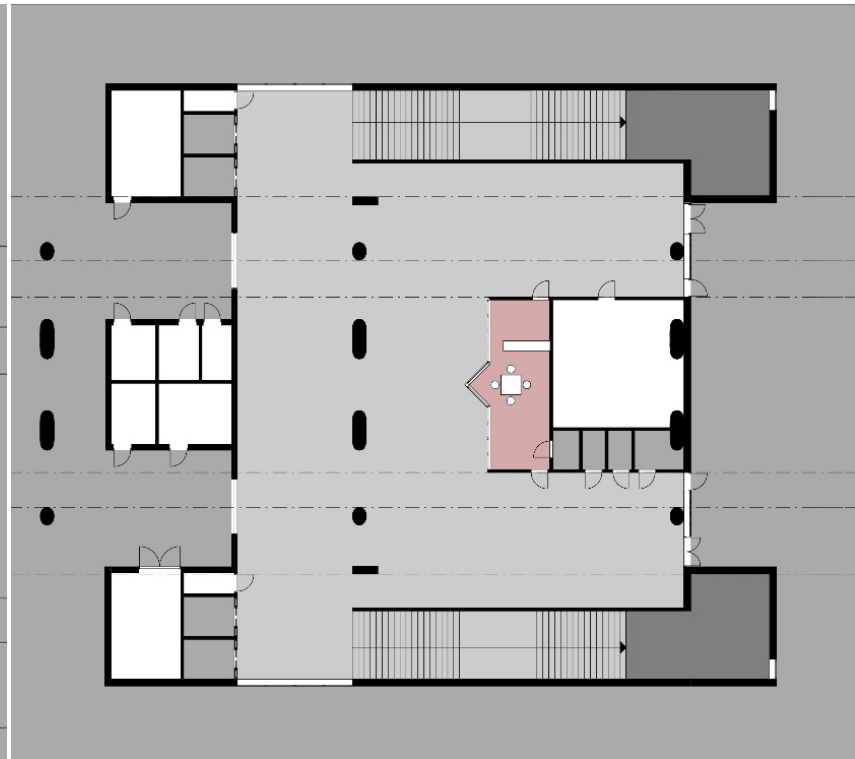
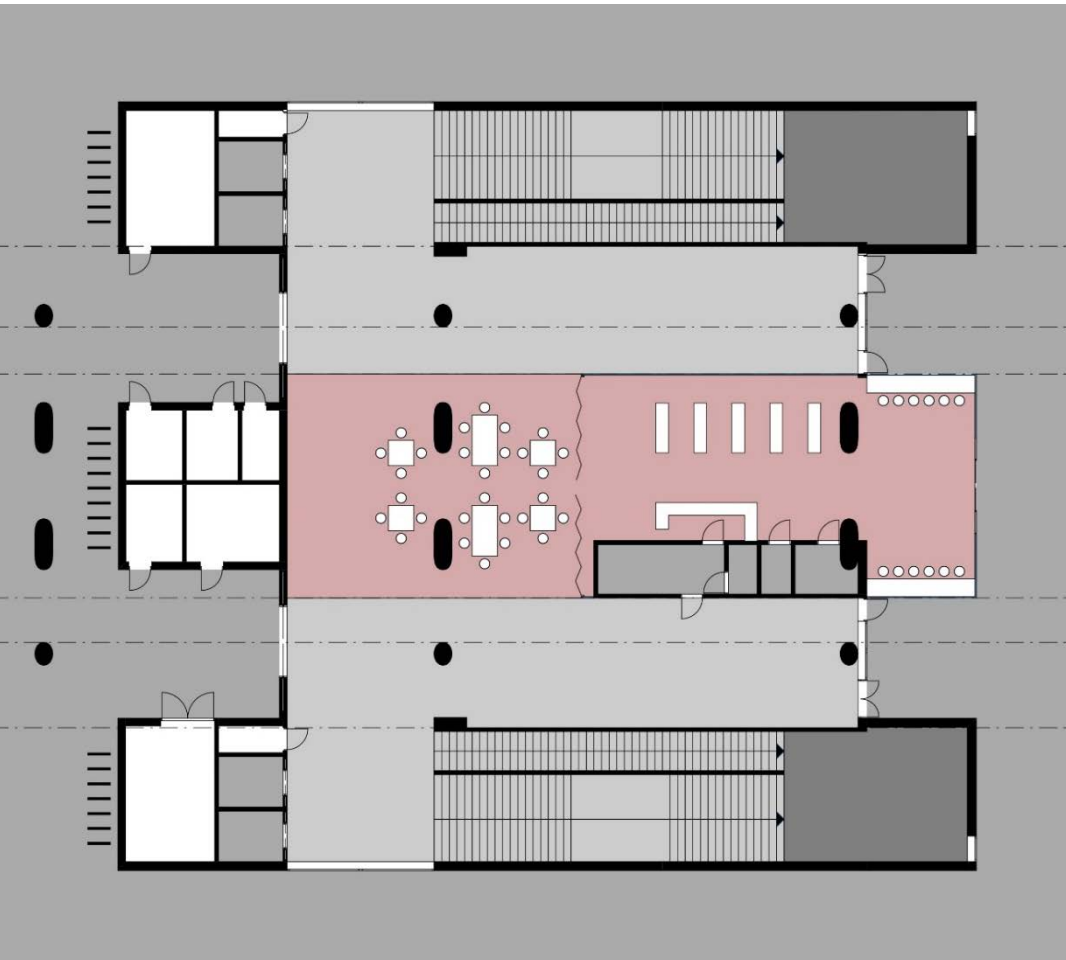
- car parks
- cafeteria / kiosk
- bicycle lane



The Cafeteria | Kiosk

Current cafeteria is small and seldom open, our vision is to widen the cafeteria and its services, lockers will be add under the escalators.

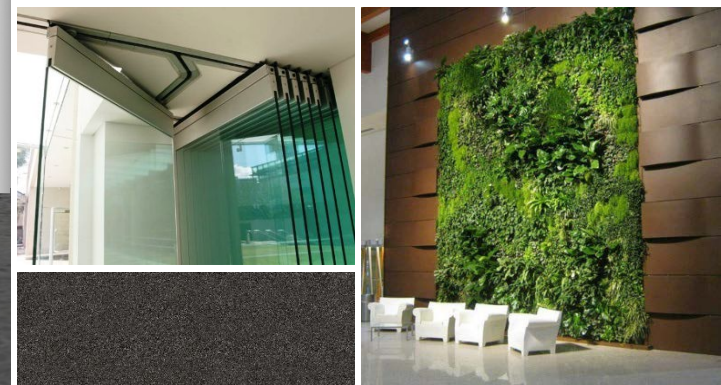
 cafeteria / kiosk



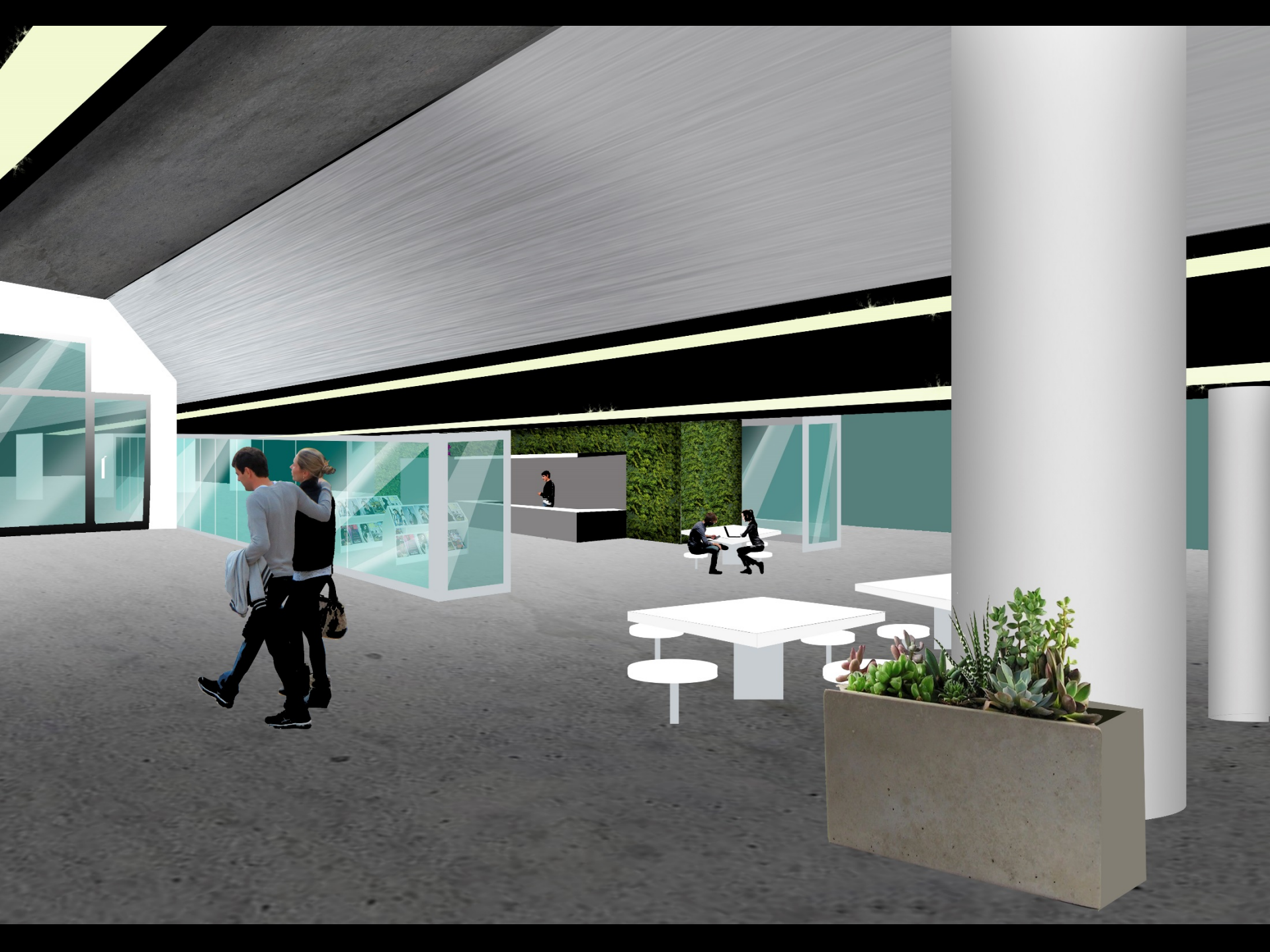
current

The Cafeteria | Kiosk

Open cafeteria | kiosk with bicycle services and surveillance



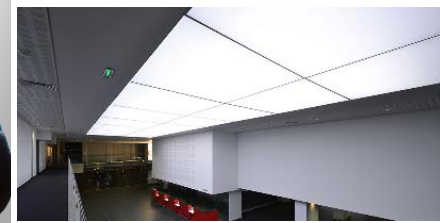
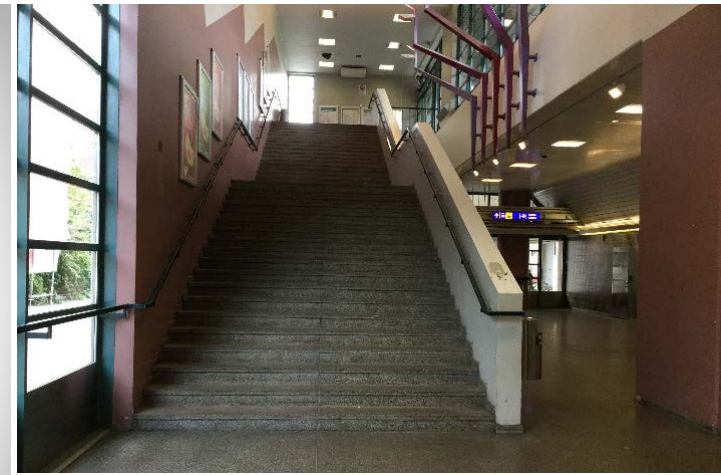
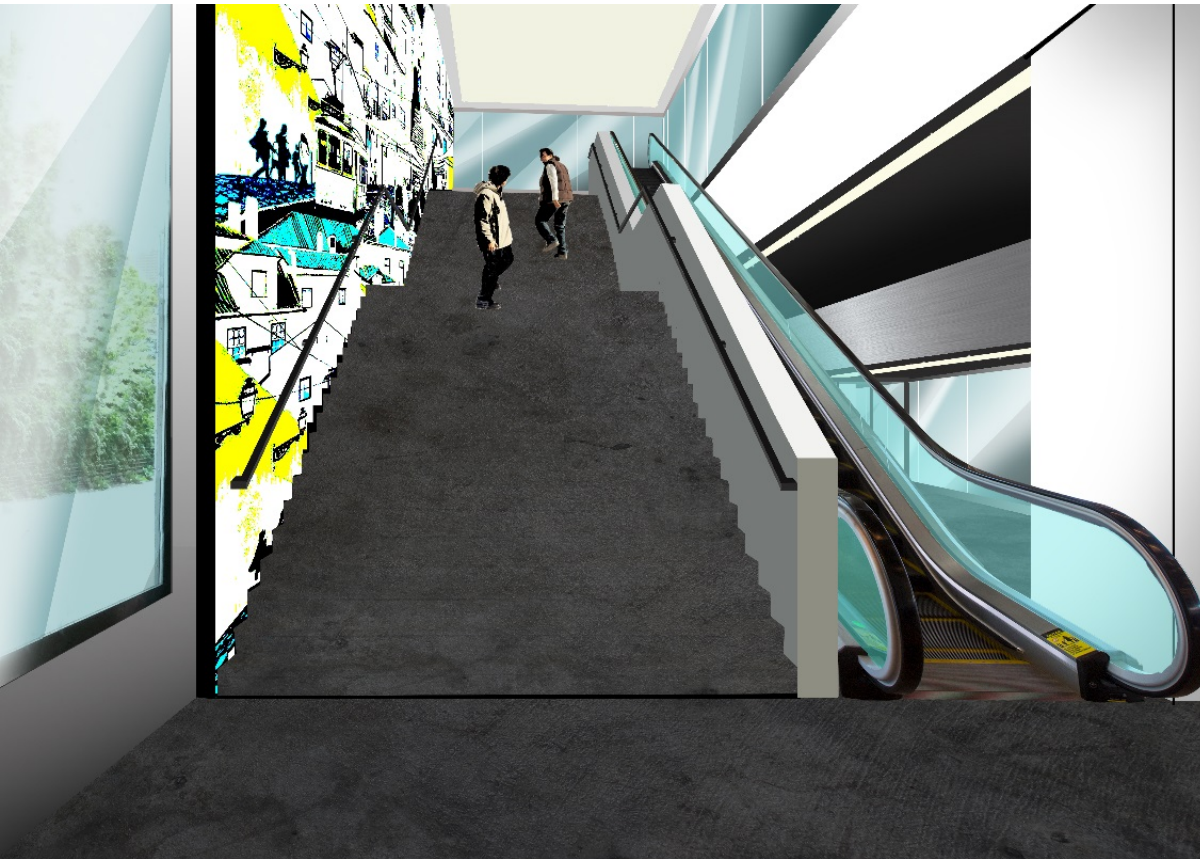
- modernized floor
- shiny surfaces
- plants





The Insides

Currently there are no escalators and the overall image is scruffy



- modernized floor
- shiny surfaces
- colorful mural painting

The Platform

Currently there are not enough benches and the overall appearance is scruffy.



- Glass walls and roofs
- White concrete
- Lots of benches
- Proper lighting



Appearance of The Station Building

Currently the station building looks cheerless and dull. Surface materials are concrete and small brown tiles.

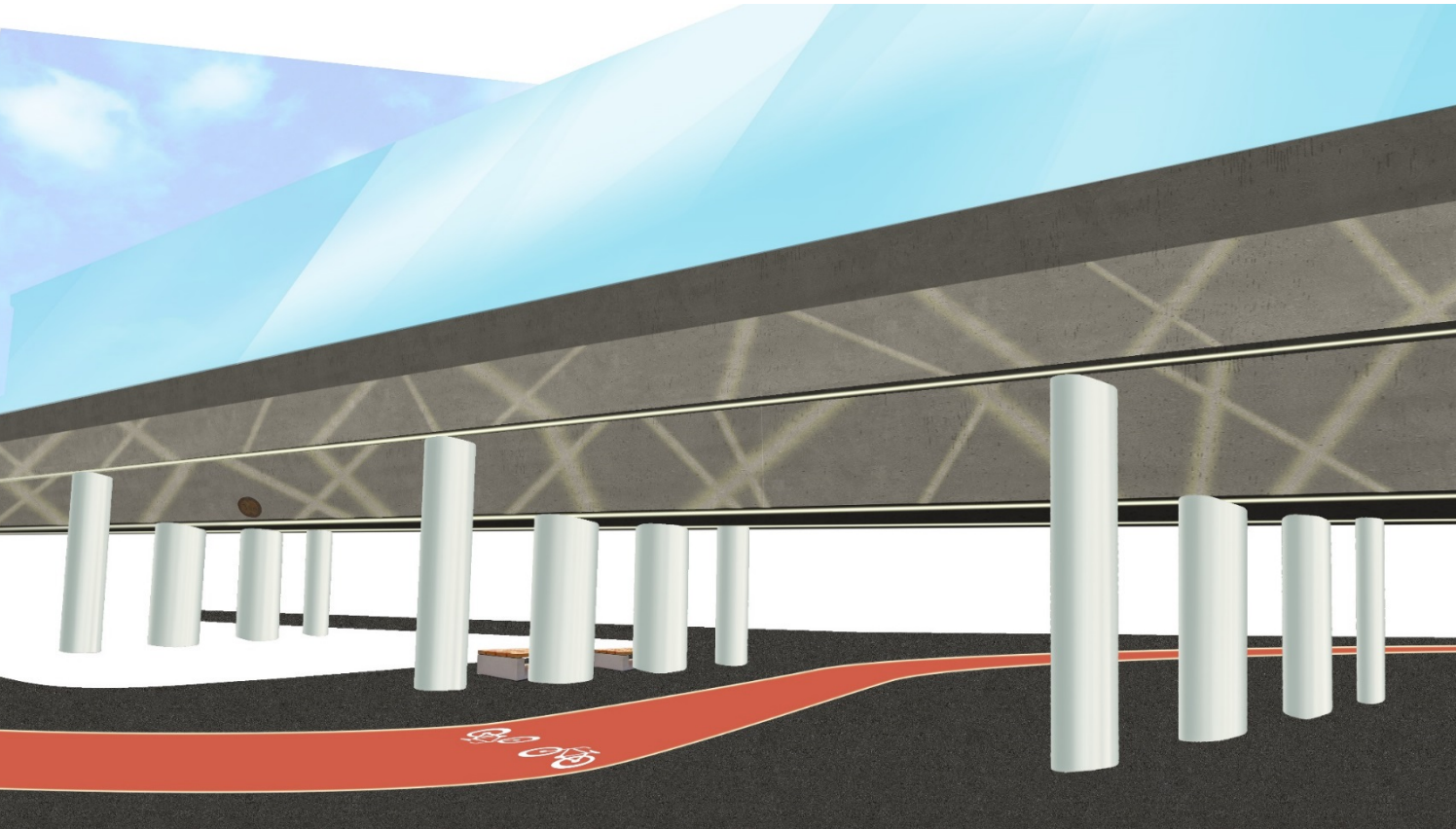


- Shiny turquoise metal slat walls
- Painted concrete
- Larger windows and new slide doors
- Big station sign

Potajois-Haaga

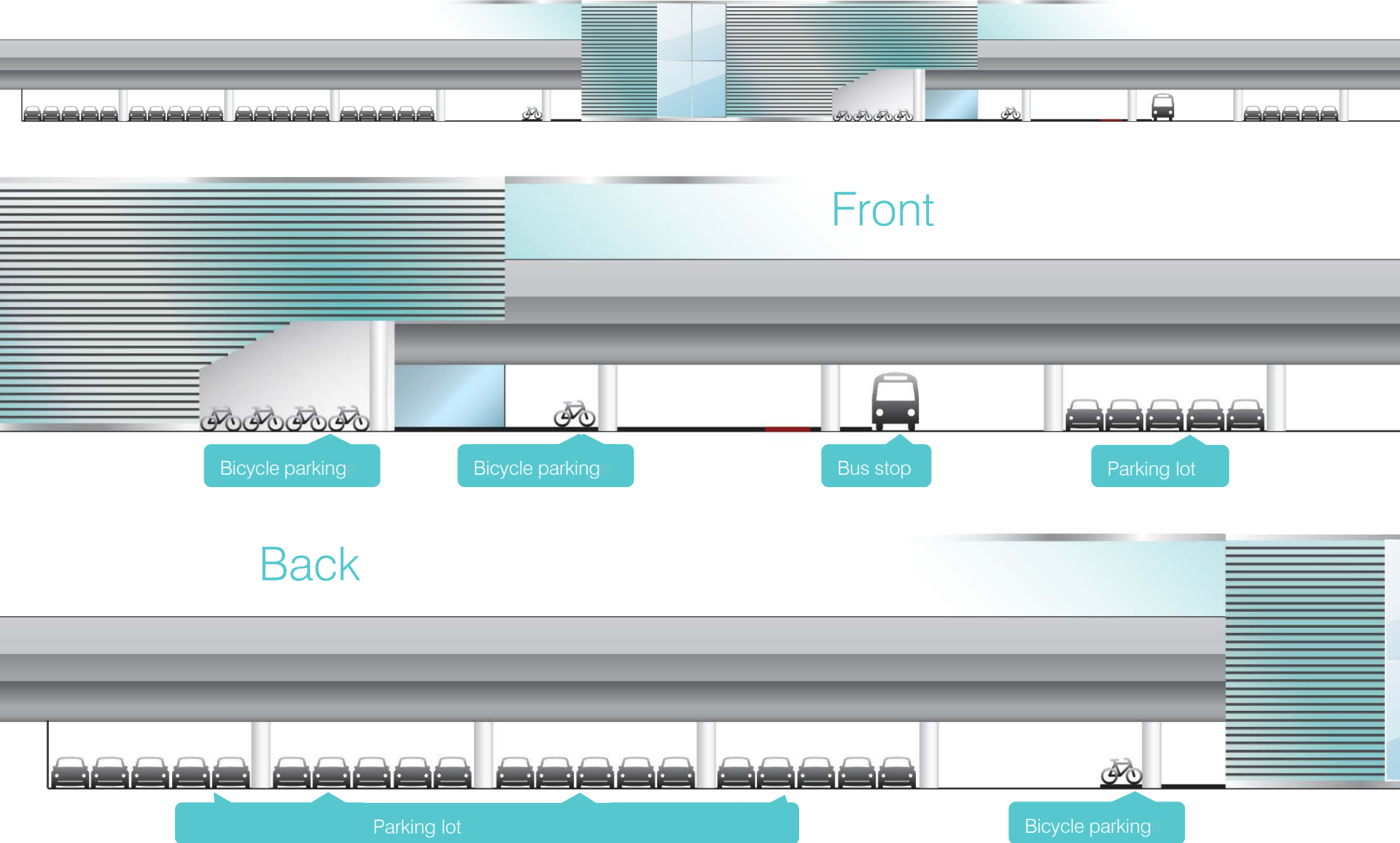


The Train Station Bridge



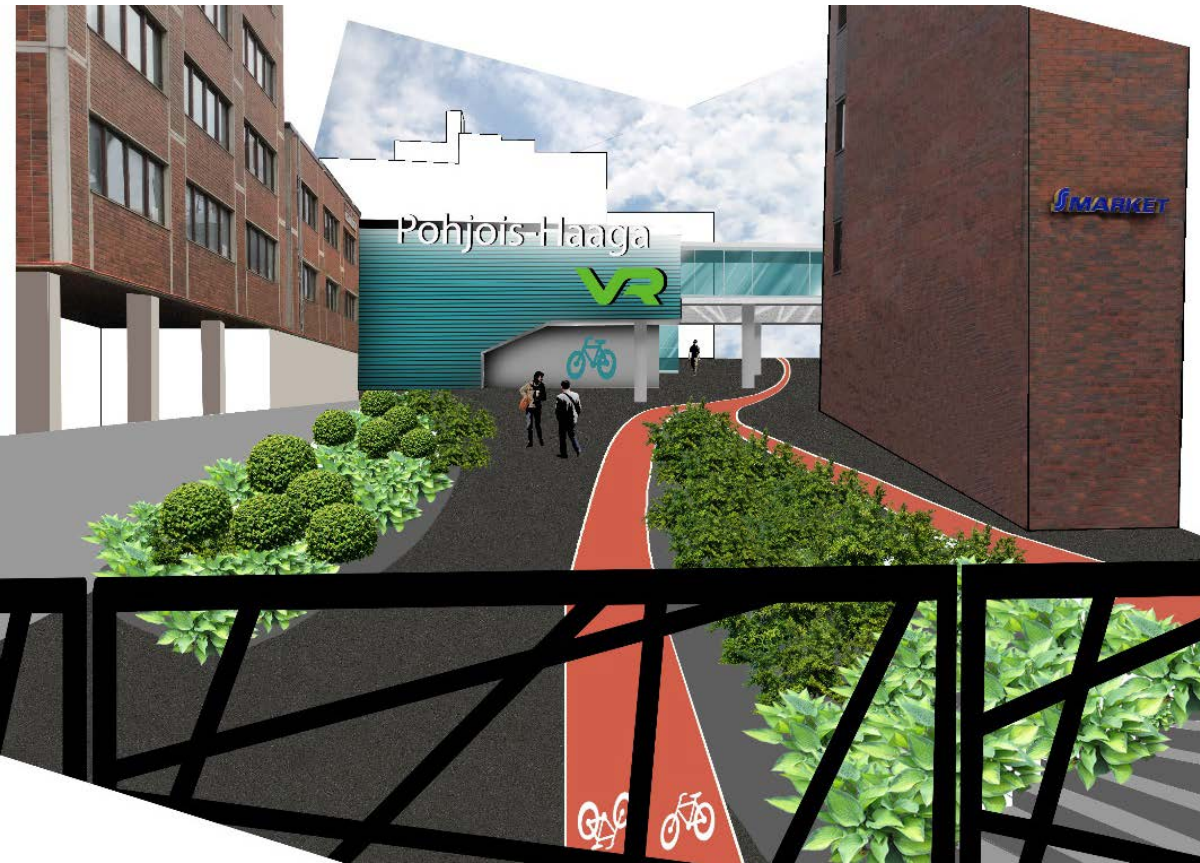
- Moving the bus stop
- Bicycle lane
- Benches
- Painted pillars
- Light art

Connection Parking at the Station Area



The Image

Currently the building itself doesn't show to the main route and we aim to make the square visually tempting



- Clear routes
- Simplified planting
- Color



Pohjois-Haaga

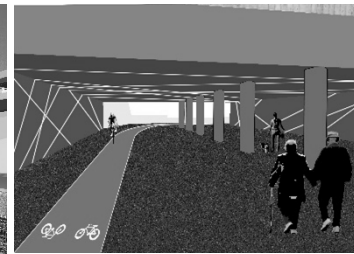
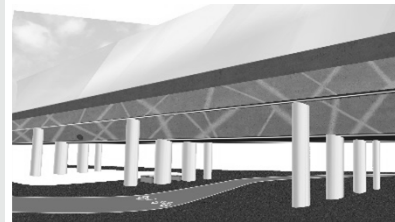
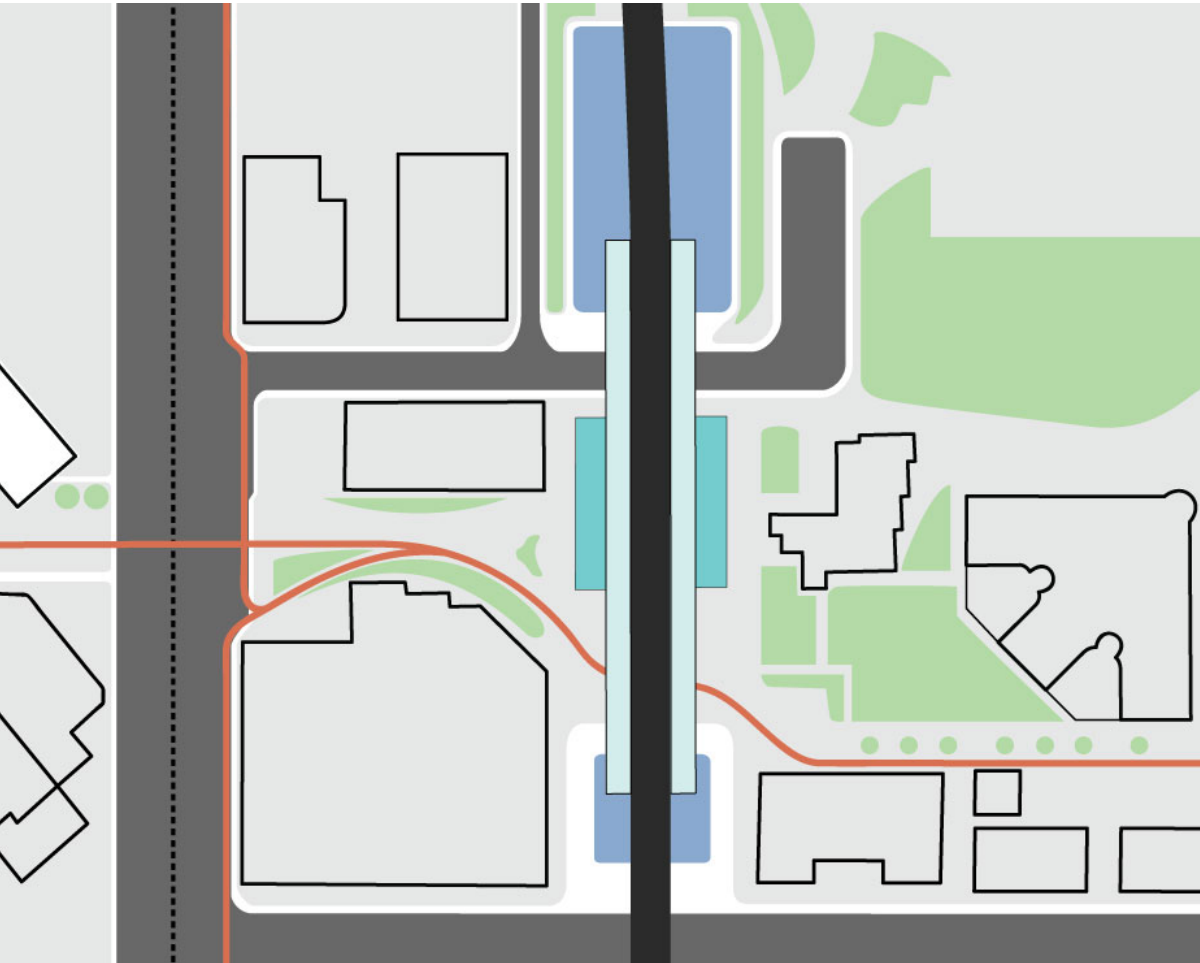


SMARKET



The Area of North-Haaga

Turquoise colored building represents the train station and blue ones are parking areas.



The Area of North-Haaga

The road from the station building to the underpass bridge

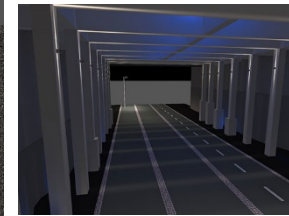


- Simplified the area and planting
- Bicycle lane



The Area of North-Haaga

The underpass bridge



- Light art to the walls and ceiling
- Bicycle lane



Benefits



Safety



Pleasant



Artsy



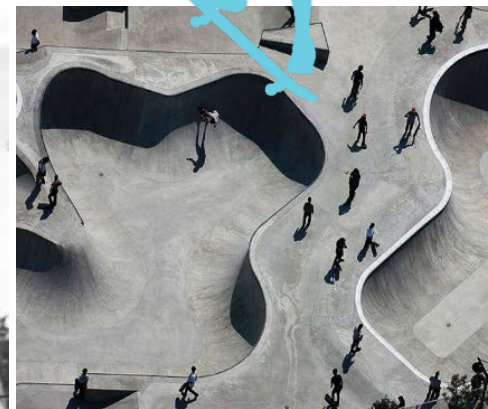
Chilling



Bright

Bonus

Activity park



Benchmarking

Activity park

HopLop is a Finnish indoors activity park for children.



Activity park KORKEE in Helsinki offers different kinds of rope tracks for kids and adults.

A company named Lappset makes different kinds of activity products for outdoors.



Activity park

Users

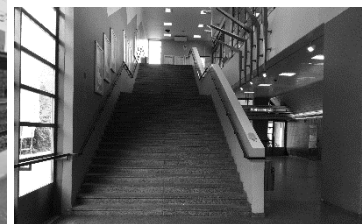
- » Kids
- » Young
- » Sporty people
- » Performers and audience

Mood

- » Playful
- » Pleasant
- » Place to gather people together
- » Place to hang around
- » More people to use the area
- » Safe

The Area of North-Haaga

Turquoise colored building represents the train station and blue ones are parking areas. Yellow one is the parkouring area and brown one represents the benches.

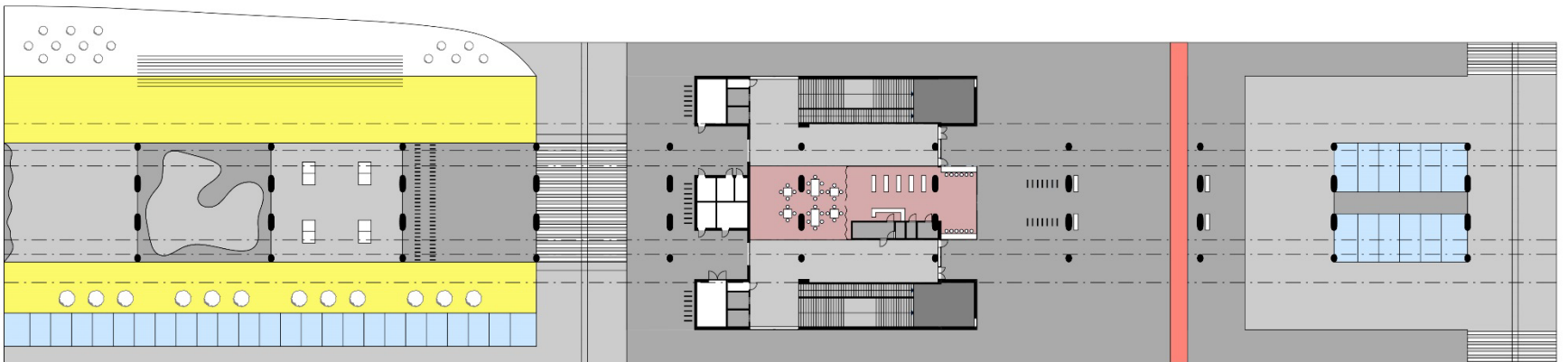


Current situation



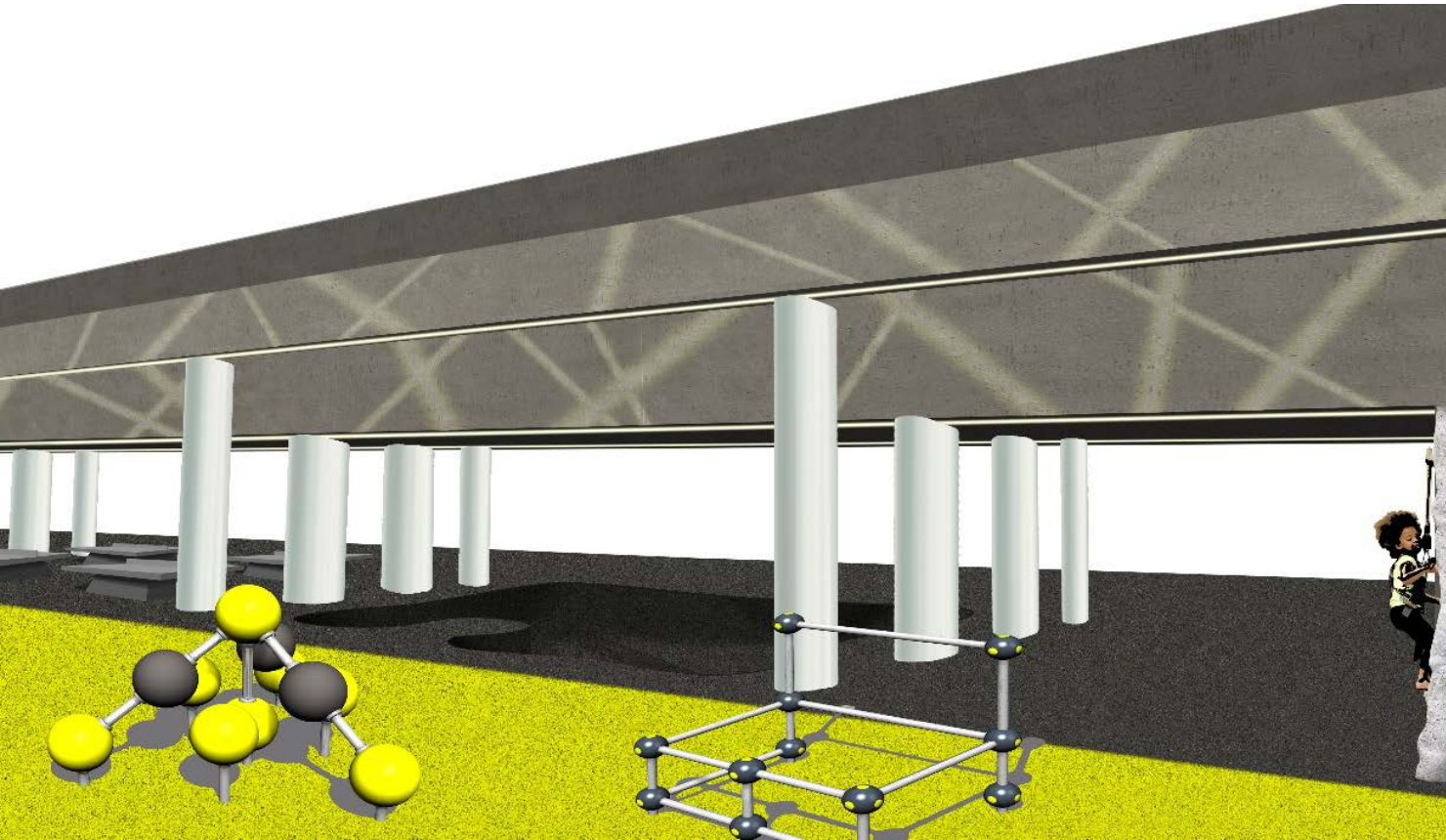
- car parks
- cafeteria / kiosk
- activity park
- bicycle lane

Improvement suggestions



Activity park

Current car parking area will be transformed to a vivid playground.



- Climbing wall
- Skating park
- Ping pong tables
- Rope route
- Parkour area
- Benches
- Stage

Sources

- http://www.archiexpo.com/prod/escofet/product-51516-340005.html#product-item_340041
- <https://paulmullins.files.wordpress.com/2013/11/cian-ginty.jpg>
- http://www.hidden-helsinki.com/wp-content/uploads/2012/07/baana_helsinki_tourism-23.jpg
- http://www.gardenista.com/files/styles/733_0s/public/img/sub/uimg/05-2012/700_scott-lewis-fix-2.jpg
- <http://blog.cms-asl.com/wp-content/uploads/2014/02/Edificio-Cristal-3.jpg>
- <http://www.architectural-review.com/Pictures/web/w/s/v/RH2121-0107.jpg>
- <https://s-media-cache-ak0.pinimg.com/736x/b3/31/47/b3314769bfa5e925c9b3b9043f1236a7.jpg>
- <http://www.magicglass.com.au/blog/raise-your-glass/post/install-stacking-glass-doors-sydney/>
- http://fr.barrisol.com/img/produit/lumiere-acoustic/details/EuroAirport_18.png
- www.lappset.fi
- http://ecx.images-amazon.com/images/I/51lqznidZnL._SL1324_.jpg
- <http://wildplay.com/wp-content/uploads/2015/05/Victoria-MonkidoBoRopes-Header.jpg>
- <http://www.valoisabaana.fi/>
- http://vallilankaksio.com/wp-content/uploads/2014/10/Lissabon_col3sin_by_Riina_Kuikka1.jpg