

School Path



Minna Marttinen
Heli Pakarinen
Eija Zweygberg

Signage

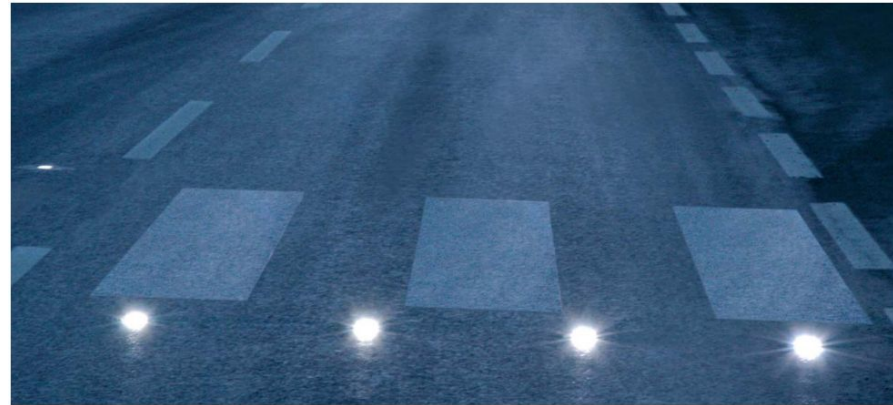
What kind of signs are needed?

- School Path label (graphical image)
- Colour Code(s) for School Path
- Some kind of general signs, which tell that "School Path goes here", f.ex.:
1) go straight forward 2) turn left / right
- Special attention for crossings: how to take care of safety, attention and warning signs for other traffic users
- Lightning
- Bridges and underpasses

Examples of warning sign lights

SIGNFLASH

- Starts to flash when cyclist or pedestrian comes close

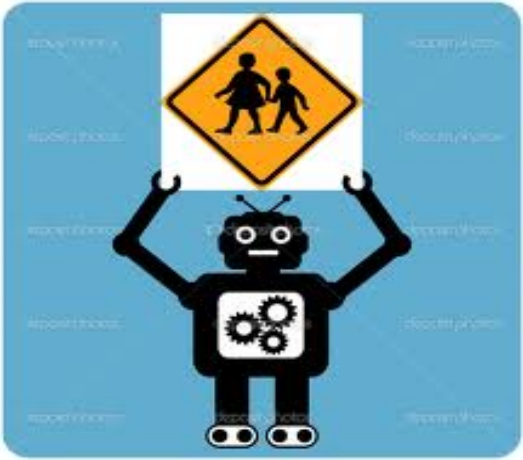


LEVELITE

- Lights can be fixed or flash
- Can be used together with Signflash



Examples of signs





www.shutterstock.com · 2089676



dreamstime.com

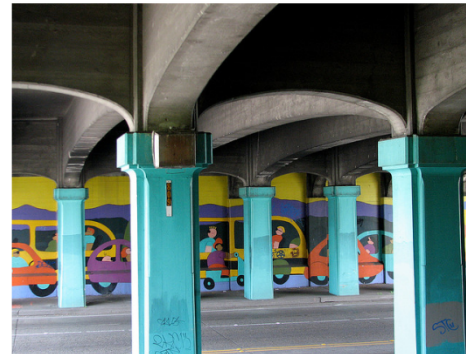


Ways to separate different lines



Bridges and underpasses

- Bridges and underpasses have to be safe and have enough lights
- How to make underpasses less scary for children (also for adults)





Safety Devices

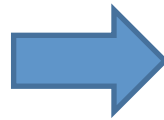
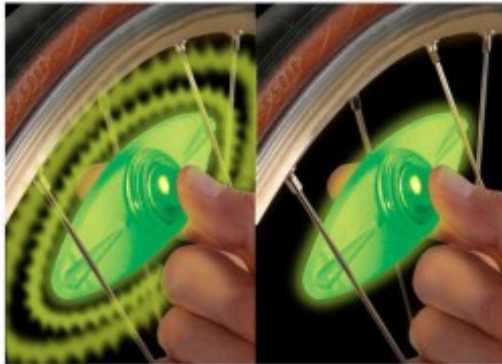
How to make children to use safety devices?

- Helmets
- Vests
- Reflectors
- Lights





FLASH or GLOW



Sense of Community

- Safety Device Tuning
 - On drawing and handcraft classes
 - On school's "afternoon clubs"
 - Sticker and tape companys could sponsor tuning
- Tutoring
 - Children on 5th and 6th grade can tutor younger children how to use and behave on School Path
 - Tutors can have some mention or small reward for that "job"

Theatre work shops:

Some observations

- Only part of students wear helmet, because they feel that they don't look good when using it
- Helmet was used, if they knew somebody who was saved from an accident by using helmet
- Helmet could be used more, if it would look nicer
- Reflectors were used on dark time, if those were attached on clothes or backpack. Detached reflectors were seen as uncool
- Students felt their school road as rather safe; maybe there are not so many dangerous crossings around that school
- Some students couldn't think that something could happen for them, because they are so good bicyclist
- Many liked to come to school by bike and even more would have liked to come but they lived too long or there were too many big hills
- School road was not scary, because it was so familiar
- At least basic traffic rules were well known; they knew how to cross the road, where they should be when they cycle or go by foot etc.
- Nobody used bicycles on winter
- Safe school road have foot/bicycle lane, crosswalks, there were no cars which drive fast and no crossings at all