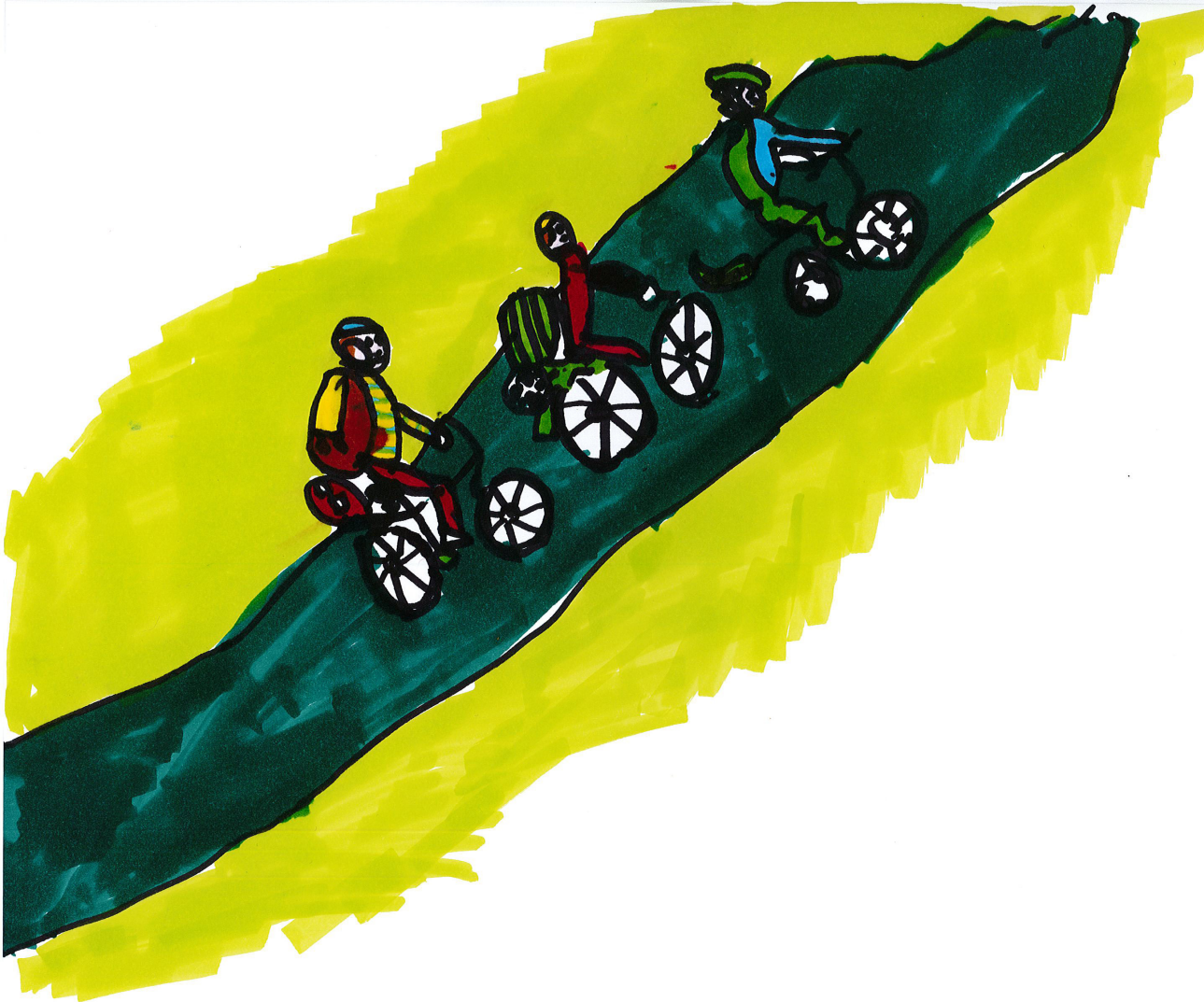




SCHOOL PATH PROGRESS

Monica Cota | Linda van Stiphout | Camilla Rouffiange-Ahmad



INTRODUCTION

Our first concept for school path improvement was to create a map of the school route in the Kivistö area. We began by walking the route and observing children on the route and at school. We met with the other school path group to coordinate our research so we don't end up doing the same research. The other team was also planning on creating a map of the Kivistö school route therefore we changed our focus. Our new concept became how to inform children and others about the school route and how to keep children safe on their route. We have done research, created a website, and made a pamphlet in order to accomplish our goals.

First for our research we discussed what the previous school path group discovered. Next, we looked up information about child safety in Finland and other countries. We also researched children's physical traits compared to adults relating to traffic, children's traffic sign recognition, and traffic safety days. We discovered that children cannot localize sounds coming from the sides as well as adults which can put them in danger when crossing the street. Children can also have trouble understanding what the traffic signs mean. Traffic safety days can help children to understand how to behave in traffic. We created a report so that we could inform the public, schools, and parents about what we have found. The information in the report will be given via website.



WEBSITE

We created a website for school path information. There is a page for kids, schools, and parents. The kids page informs children of traffic safety through games, videos, and photos. We chose to have games and interactive information on the kids page so children will be interested in learning about traffic rather than just reading text. We created games for the website that appeal to a variety of ages and that will help them to make responsible traffic decisions. The school page has information that can be printed and passed out at schools, information on traffic safety events, and links to other information. The parents page has our research, traffic safety information, a safety checklist, and links to other websites. There is a school path page created for everyone. Each school district will have their own page. On the page there is a map of the school path in the area and pictures of important areas along the path. The pictures have an explanation of how to safely behave in the area or how the area is safe. We did research about how children use a website. How we can keep children interested in our website. We use bright colors, a easy navigation, and interaction.



This is our first version of the website. It is flawed because the graphics are boring and do not appeal to children. The picture does not accurately represent the school path.

This is the second version of the website. We wanted it to appeal to children more than the first one but in our attempt we made it look too childish so that it no longer appeals to older children and adults. However we did like the idea of a hand-drawn theme because it represents the school environment.



This is our third version of the website. It is the children's page of the site. We wanted to create an interactive hand-drawn map like someone had drawn on a chalkboard. We liked the idea but our result was dark and not as exciting as we wanted.

This is the second to last version of the main site page. We wanted a hand-drawn look and we wanted it to look fun and simple. We also wanted it to appeal to all age groups. In our attempt to make it brighter and simpler we ended up making it look too boring and not cohesive.





PAMPHLET

We created a pamphlet to inform the children about safety that encourages them to visit the website. Our original pamphlet was supposed to be directed towards everyone: adults, children, schools, and the public. We realized that our target group was too large and chose the most important group, the children. We changed the look of our pamphlet drastically when we narrowed our target group. Before the pamphlet was too broad and generic so it did not give much useful information. The new pamphlet is interactive and more specific therefore it is more useful for children. We made many designs for the pamphlet while trying to choose which is the most interesting for children. The final design is 3D, it folds, and has QR codes. This design is the most inviting for children because they can physically do things with it rather than just look at it.

OLD PAMPHLET

School Path Safety

ljisdijl jkdrit jdkrtjiop ngjhd
jghk djfghod jshogh jsg ijli bn,
mnot litrl jgotisp ooo sgjslir jstjts isjr stjts ljisdijl
jkdrit jdkrtjiop ngjhd jghk djfghod jshogh jsg
ijli bn,
mnot litrl jgotisp ooo sgjslir jstjts isjr stjts ljisdijl
jkdrit jdkrtjiop

ngjhd jghk djfghod jshogh jsg
ijli bn, mnot litrl jgotisp ooo sgjslir jstjts isjr stjts
ljisdijl jkdrit
jdkrtjiop ngjhd jghk djfghod jshogh jsg ijli
bn, mnot litrl jgotisp ooo sgjslir jstjts isjr stjts ljisdijl
jkdrit jdkrtjiop ngjhd jghk djfghod jshogh jsg
ijli bn, mnot litrl jgotisp ooo sgjslir jstjts isjr
stjts ljisdijl jkdrit jdkrtjiop ngjhd jghk djfghod
jshogh jsg ijli bn, mnot litrl jgotisp ooo sgjslir
jstjts isjr stjts ljisdijl jkdrit jdkrtjiop ngjhd jghk
djfghod jshogh jsg ijli bn, mnot litrl jgotisp
ooo sgjslir jstjts isjr stjts ljisdijl jkdrit jdkrtjiop ng-
jhd jghk djfghod jshogh jsg ijli bn, mnot litrl
jgotisp ooo sgjslir jstjts isjr stjts




Visit our Website at:
<http://monicacofo.wx.com/schoolpath>



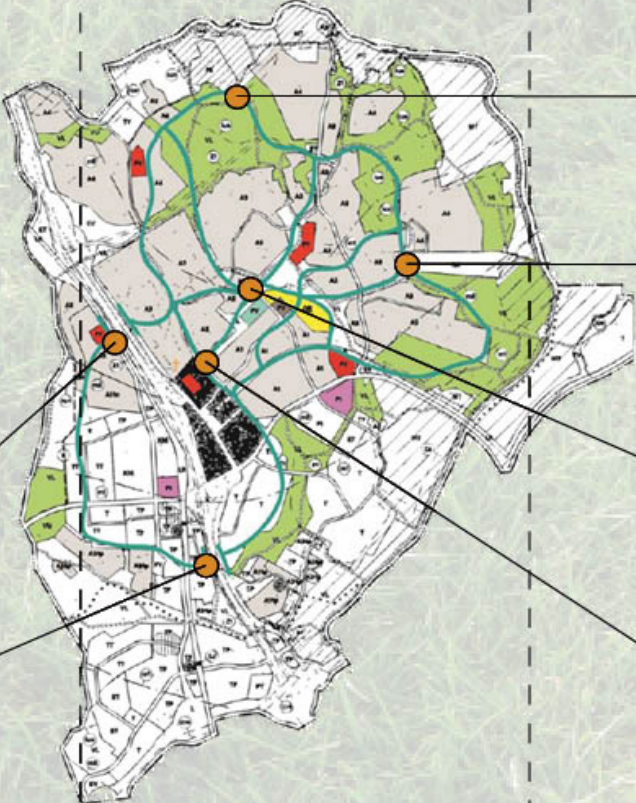
Kivistö

School Path



Kivistö School Path Safety

- Residential area
- Outdoor activities area
- Sports center
- School
- Housing fair area 2015
- Kivistö center
- Route
- Dangerous areas

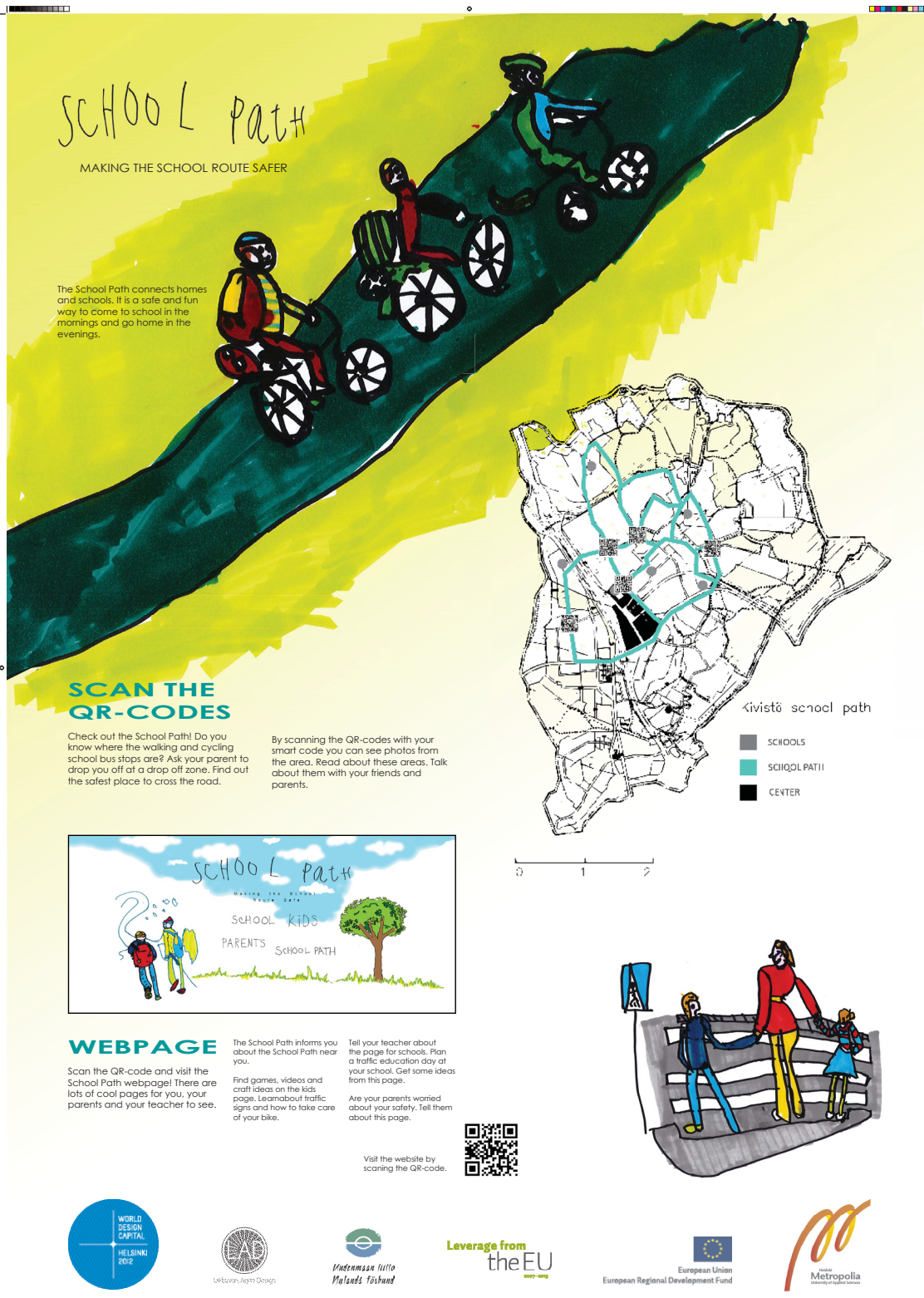


jkdrit jdkrtjiop ngjhd jghk
djfghod jshogh jsg ijli bn,
mnot litrl jgotisp ooo sgjslir
jstjts isjr stjts ljisdijl jkdrit jdkrt-
jiop

jkdrit jdkrtjiop ngjhd jghk
djfghod jshogh jsg ijli bn,
mnot litrl jgotisp ooo sgjslir
jstjts isjr stjts ljisdijl jkdrit jdkrt-
jiop

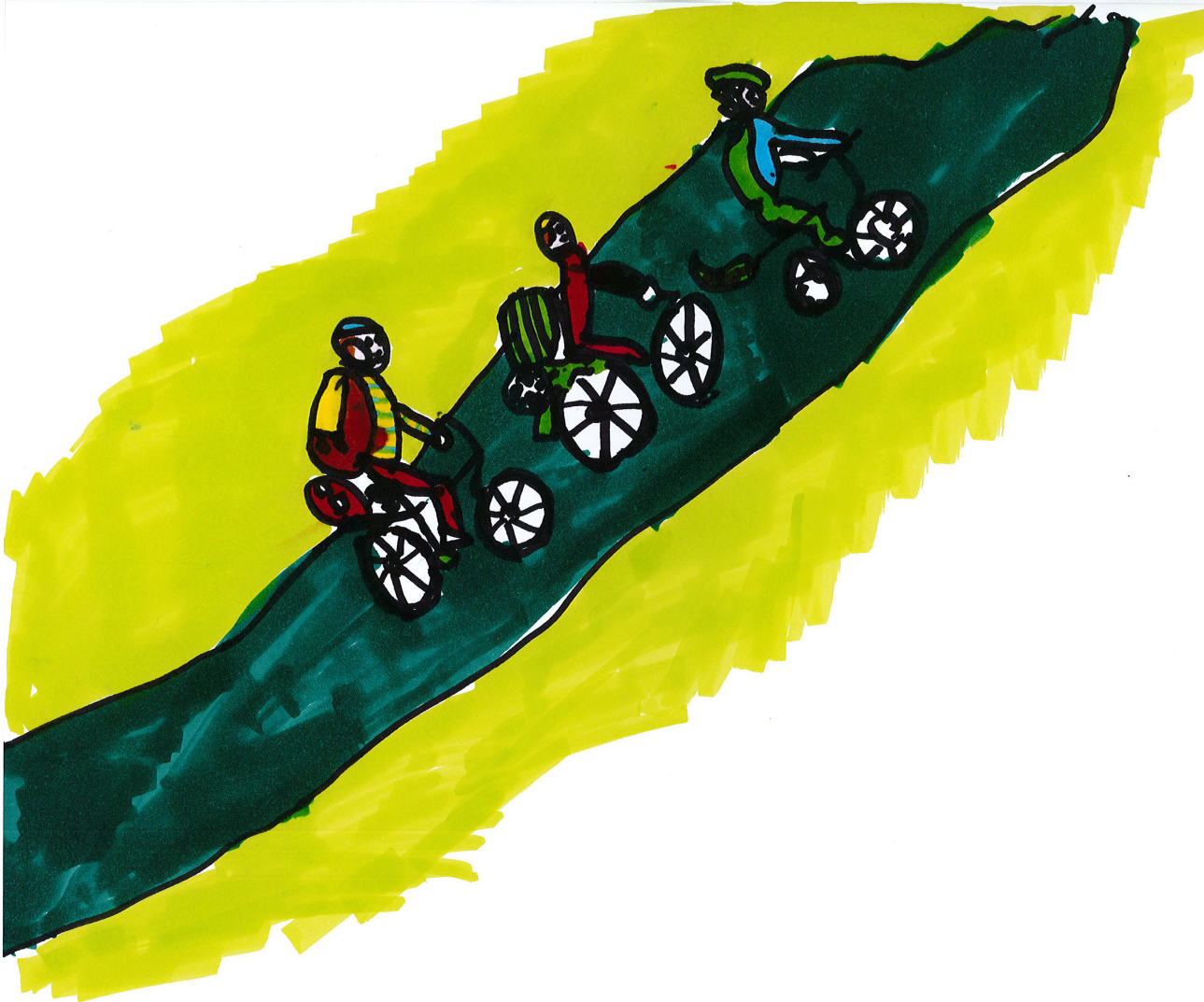
jkdrit jdkrtjiop ngjhd jghk
djfghod jshogh jsg ijli bn,
mnot litrl jgotisp ooo sgjslir
jstjts isjr stjts ljisdijl jkdrit jdkrt-
jiop

jkdrit jdkrtjiop ngjhd jghk
djfghod jshogh jsg ijli bn,
mnot litrl jgotisp ooo sgjslir
jstjts isjr stjts ljisdijl jkdrit jdkrt-
jiop



POSTER

We made a poster for schools that inform everyone about the website and about the school path. The poster has a map with QR codes that lead to a picture of the place on the map. Along with the picture is text explaining the safety precautions of the area. There is also a QR code for the main page of the website. The poster explains the reason for the website.



CONCLUSION

Overall we have provided a community with information and materials to keep children safer on their way to and from school. We have done this by providing a website with information for children, parents, and schools. Also by providing a pamphlet at schools for children encouraging them to be safe. This concept can be applied to almost any school or school district anywhere in the world.