



KIVISTÖ
AREA
FINLAND

•
BIKE
PARKING



.....
Liro RISTOLA . Laura SCHWARTZBERG . Anni KUNNAS . Iris DEVAIS

THE SUMMARY



BIKE PARKING NOW

Observations & possibilities.

THE CHALLENGE

Where we need bike parking?

THE SAFETY & THE USERS

A bike for a better life.

THE CONCEPT

Context & urban connections.

PROJECT DEVELOPMENT

Sketches, mock-ups, 3D, logo.

FUTURE DEVELOPMENT

Signage, routes, budget.



No organization

In the city, the bikes are dropped off anywhere in the urban infrastructure.

Short & long term parking

Capacity:
20 bikes =
1 car

No limit time
Free



PARKING BIKE

Observations & possibilities

Security

People lock their bike with a simple padlock and a key.

Materials too strong to break?

Easy to cut and steal.



Product design

Simple shapes
Alu material: hygienic
No rust
Easy to use

Services?

Picnic table near a park.
We have to be careful on our own bike.

No lockers...
In the open air.



Spatial design

No reserved space to park your bike.
The lock system is on the bike itself (press & lock with a key)

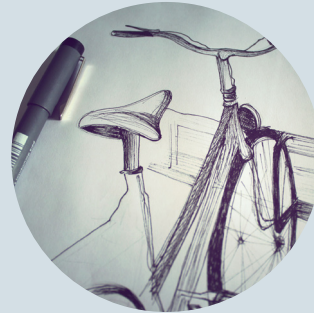
Outside area (weather?)



BIKE PARKING NOW



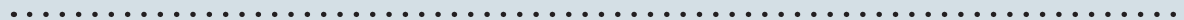
Observations & possibilities



During the cycling tour, we have noticed that there was **no organization** in the city.

Indeed, the bikes are **dropped off** anywhere onto the **sign-posts** or in **improvised** parkings.

There is a need to have **reserved parks bikes** for cyclists in **strategic spots** and to create colourful **landmarks** near the parking bike, easy to find for people.



BIKE PARKING NOW

•
Observations & possibilities

PROBLEMS

LACK OF SPACE NEXT TO THE STOPS.

BIKES **ARE NOT ALLOWED TO TRANSPORT IN BUS** AND TRAMS.

BIKES ARE ONLY **ALLOWED TO TRANSPORT IN SUBWAY AND TRAIN**, BUT ONLY A FEW RACKS PER VEHICLE.

THERE IS USUALLY AN **INSIDE BICYCLE GARAGE** IN THE APARTMENT BUILDINGS, BUT THERE MIGHT BE **LACK OF OUTSIDE PARKING SPACE** DURING THE MOST POPULAR CYCLING SEASON.

POSSIBILITIES

NEAR BY THE **PUBLIC TRANSPORTATIONS**
(PEOPLE LIKE TO COMBINE PUBLIC TRANSPORTATION AND CYCLING)

NEED OF EASILY **MOVABLE** PARKING SYSTEM

NEAR BY THE **EVENT AREAS**
(SUCH AS FESTIVALS, CITY EVENTS, EXHIBITIONS ETC.)

YARDS OF THE **RESIDENTIAL AREAS** AND SERVICES



THE SAFETY & THE USERS



Observations & possibilities

POSSIBILITIES

POSSIBILITIES

SAFETY

PARKING SHOULD BE ARRANGED
IN A **GUARDED PLACE**
OR
SITUATED **VISIBLE** AND **CENTRAL**.

BRIGHT WHITE LIGHT PREVENTS
CRIMES.

THE DIFFERENT USERS

NEED FOR A **LONG- AND SHORT
TERM PARKING**.

DIFFERENT PARKING SOLUTIONS
AS A **BIKE RACKS** AND
BIKE DEPOSIT BOXES.



UNDERSTANDING THE USERS IN THE STREET



The jogger



The cyclist



The skateboarder



The dogwalker



The shoppers



The tourists



The mother & kids



The food
breakers



The students



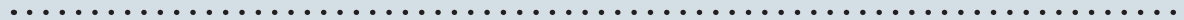
The workers



The disabled
people



The picnic
people



OUR SOLUTION

CONTAINER PARKING

•

APPROPRIATE LIGHTING,
FUNCTIONAL LOCKING SYSTEM
AND
CENTRAL LOCATION
MAKES USING SAFE.

PAINTED IN BRIGHT COLOR
AND LOGO SO IT'S EASY TO
RECOGNIZE.

SITUATED IN A CAR
PARKING LOT SO IT DOESN'T
OCCUPY SPACE IN THE
PAVEMENT.

A FLEXIBLE OPTION AS IT IS
MOVABLE TO THE PLACES WHERE
MOSTLY NEEDED:

BUS/TRAM STOPS
TRAIN STATIONS
SERVICES
EVENT AREAS
RESIDENTIAL AREAS
ETC.

EASY TO USE IN WINTER TIME AS
IT PROTECTS BICYCLES FROM
SNOW AND RAIN.

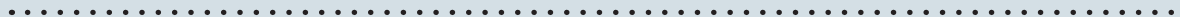
MAP AND PUBLIC
TRANSPORTATION
SCHEDULE SCREENS AS A
EXTRA SERVICE.

POSSIBLE TO USE AS A
SINGLE CONTAINER
OR AS A MODULE,
COMBINING MORE THAN
ONE CONTAINER.

POSSIBLE TO EQUIP WITH A
REGULAR BIKE RACKS OR
SINGLE BIKE DEPOSIT BOXES
OR BOTH OF THEM.

TRACKING SYSTEM THAT
COOPERATES WITH THE
ROUTEGUIDE OF HSL.

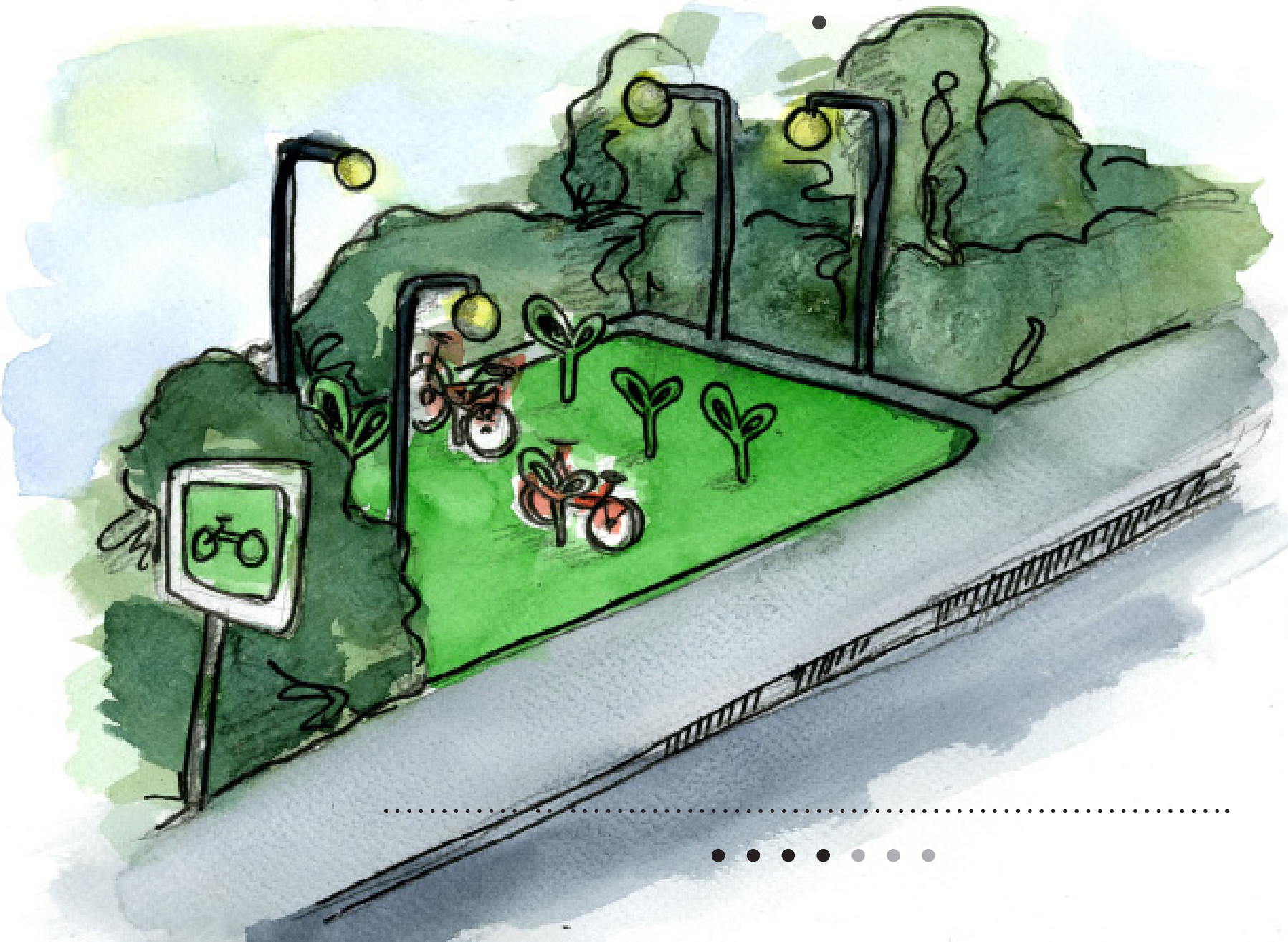
CONTAINER TRACKING
MOBILE APPLICATION.



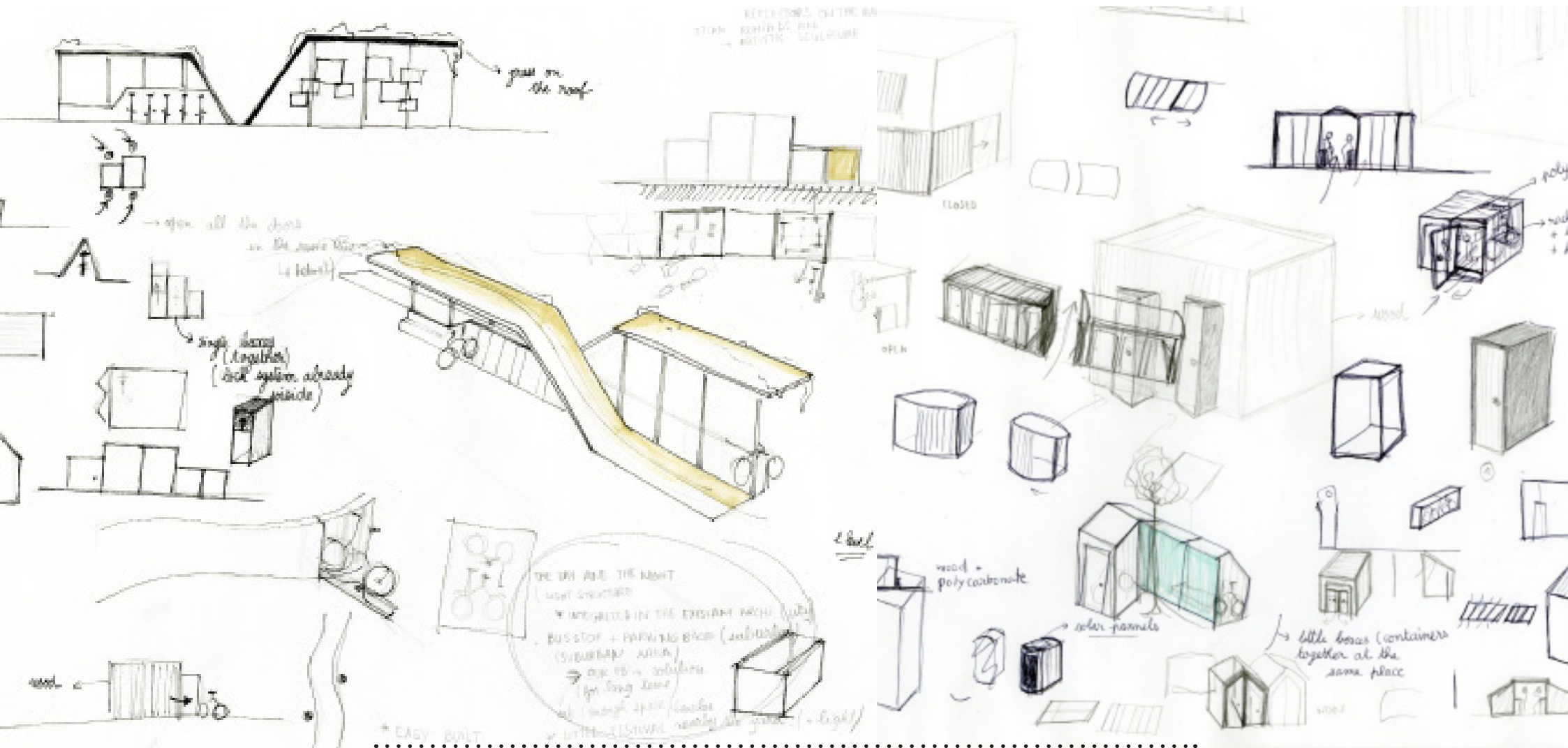
THE CONCEPT INSPIRATIONS



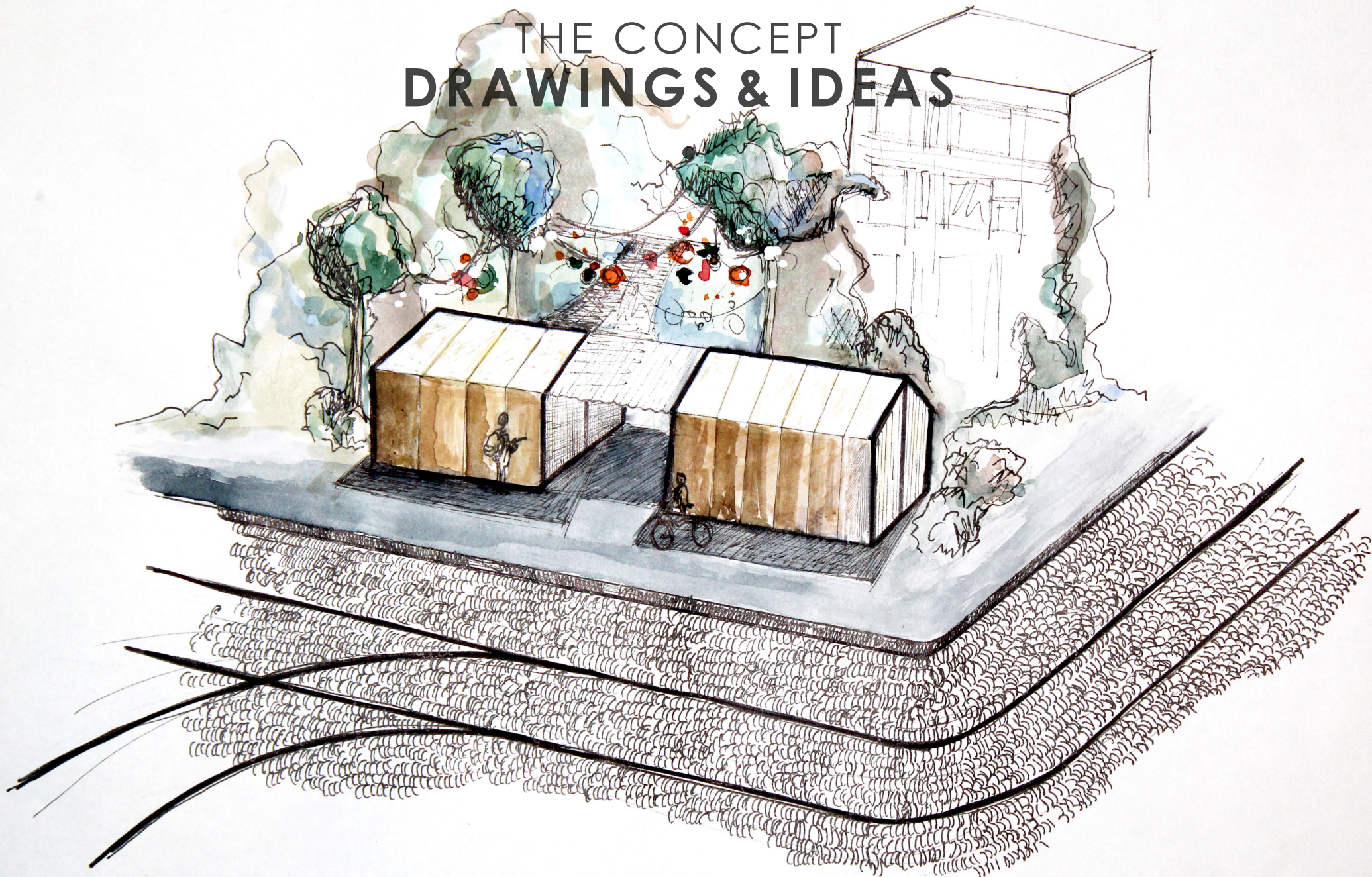
THE CONCEPT DRAWINGS & IDEAS



THE CONCEPT DRAWINGS & IDEAS



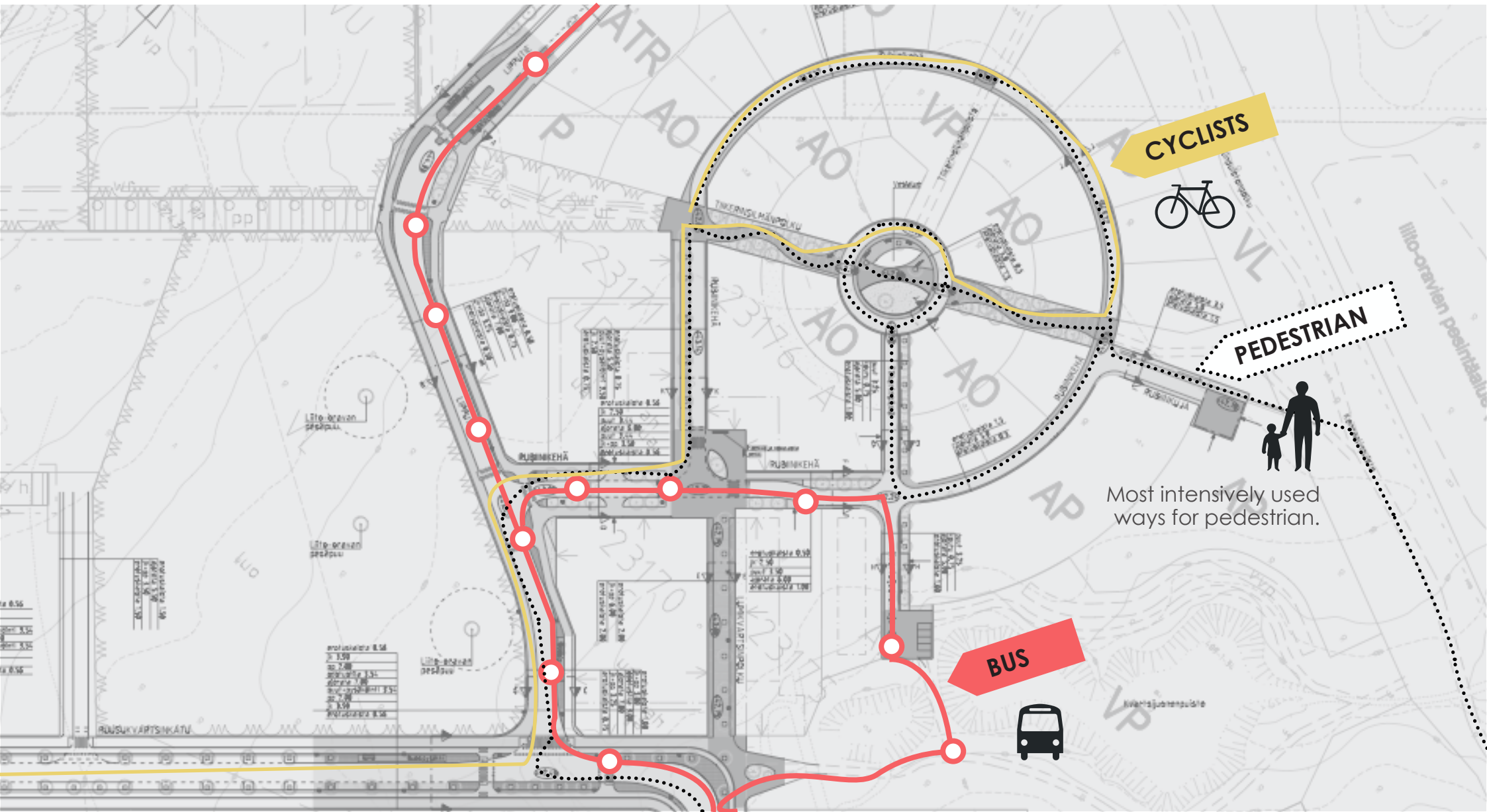
THE CONCEPT DRAWINGS & IDEAS



.....



PUBLIC TRANSPORT SYSTEM



THE IMPLEMENTATION OF THE PROJECT

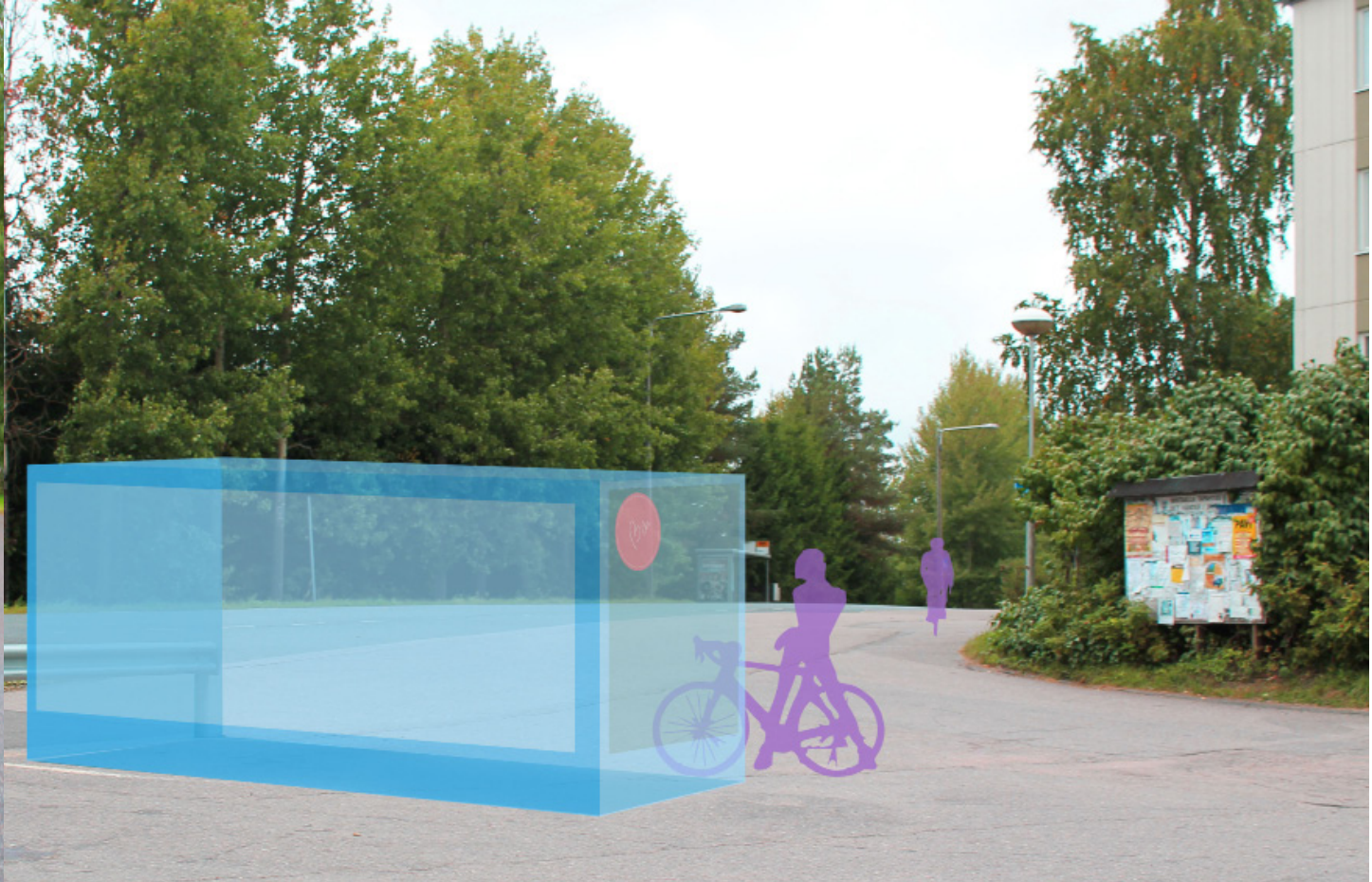
•



THE CONCEPT SITUATIONS



Near a forest road.



In a residential area.



THE CONCEPT SITUATIONS



Near a train station.



And some others places, like under a bridge...



POTENTIAL ACTIVITIES



BIKING/JOGGING

Sportsmen
Young people



STREET MARKET/EVENTS

Tourists
Inhabitants



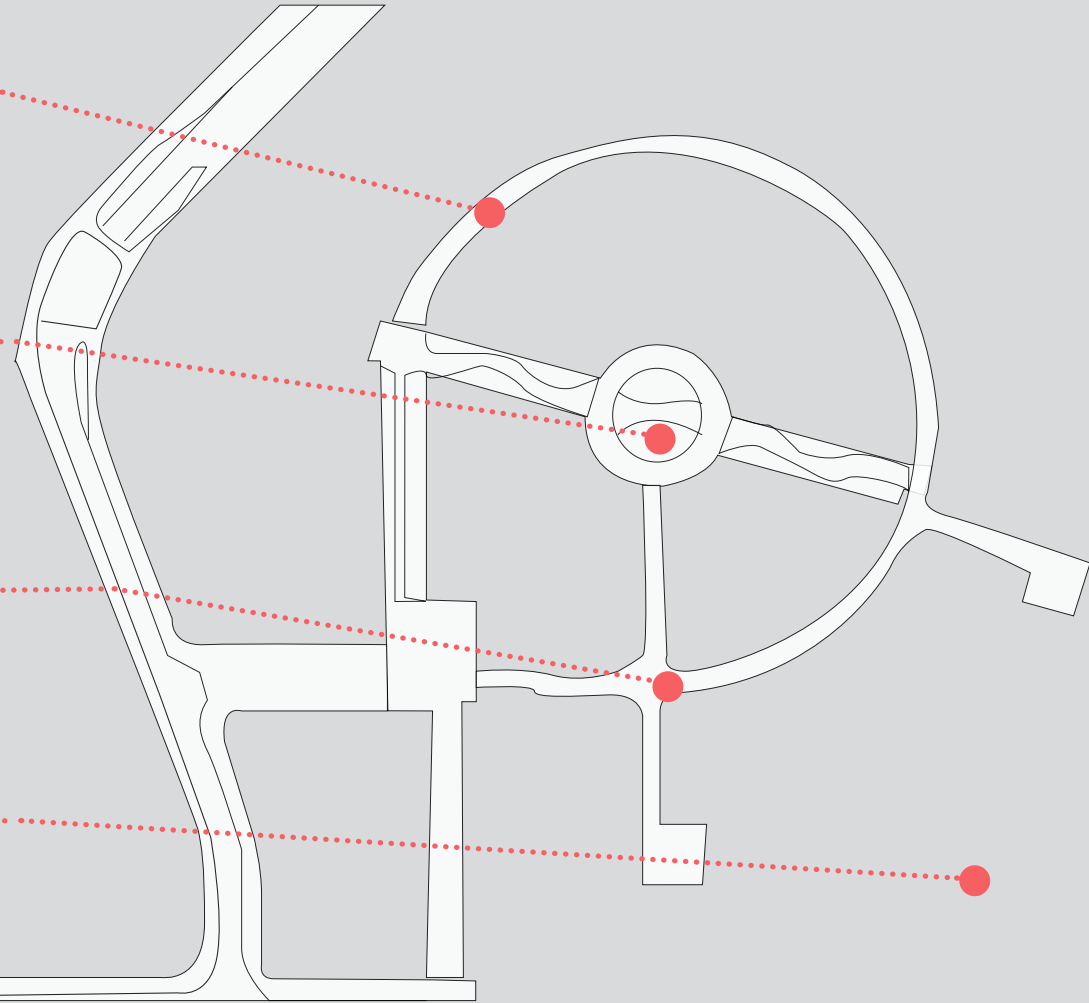
DESIGN & ART

Tourists
Designers & artists

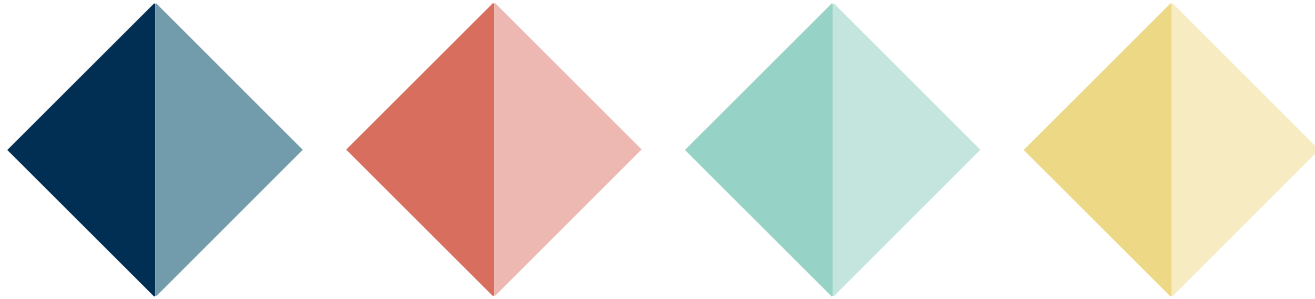


CROSS-COUNTRY SKIING

Sportsmen
Young people



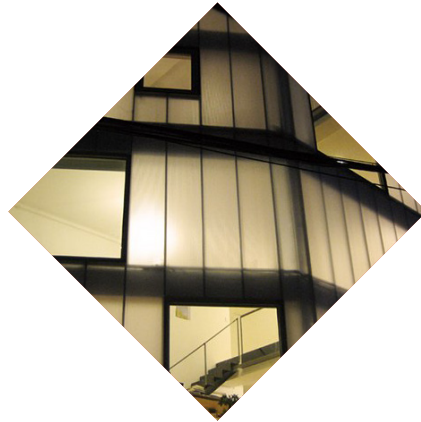
THE CONCEPT COLORS & MATERIAL



pastel with dominant ochre
chromatic evolution
luminous



Wood + polycarbonate



Autoluminescent
polycarbonate
(solar pannels)



White & natural
with touch of colors



Reflects & colors



THE GRAPHIC LOGO DESIGN



+

BIKE

=



THE GRAPHIC LOGO DESIGN



TIME TABLE



WEEK 38

Draw the shape of the structure.
Decision of the materials and colors.
Make sketches & perspectives of our parking bike.

WEEK 39

Determine precisely the lock system in the parking bike.
Create pictograms for the different route in Kivistö.
Photomontages of the structure and 3D mock-ups.

WEEK 40

3D or prototype
Photomontages & illustration of the daytime (winter, spring...)

WEEK 41

Finalization of the project & lay-out of the presentation.



BIBLIOGRAPHY & REFERENCES



IMAGES

<http://www.pinterest.com/pin/82824080619788101/>

http://25.media.tumblr.com/tumblr_md0k41q6pW1r89buwo1_1280.jpg

<http://boomerreviews.com/10-great-solopreneur-jobs-for-baby-boomers/solopreneur-dog-walker/>

<http://www.emcdda.europa.eu/topics/young-people>

http://www.woophy.com/forum/9_5517_1.html

<http://www.designboom.com>

RESEARCH

<http://vantaainnovation.fi/en/welcome-to-vantaa/>

