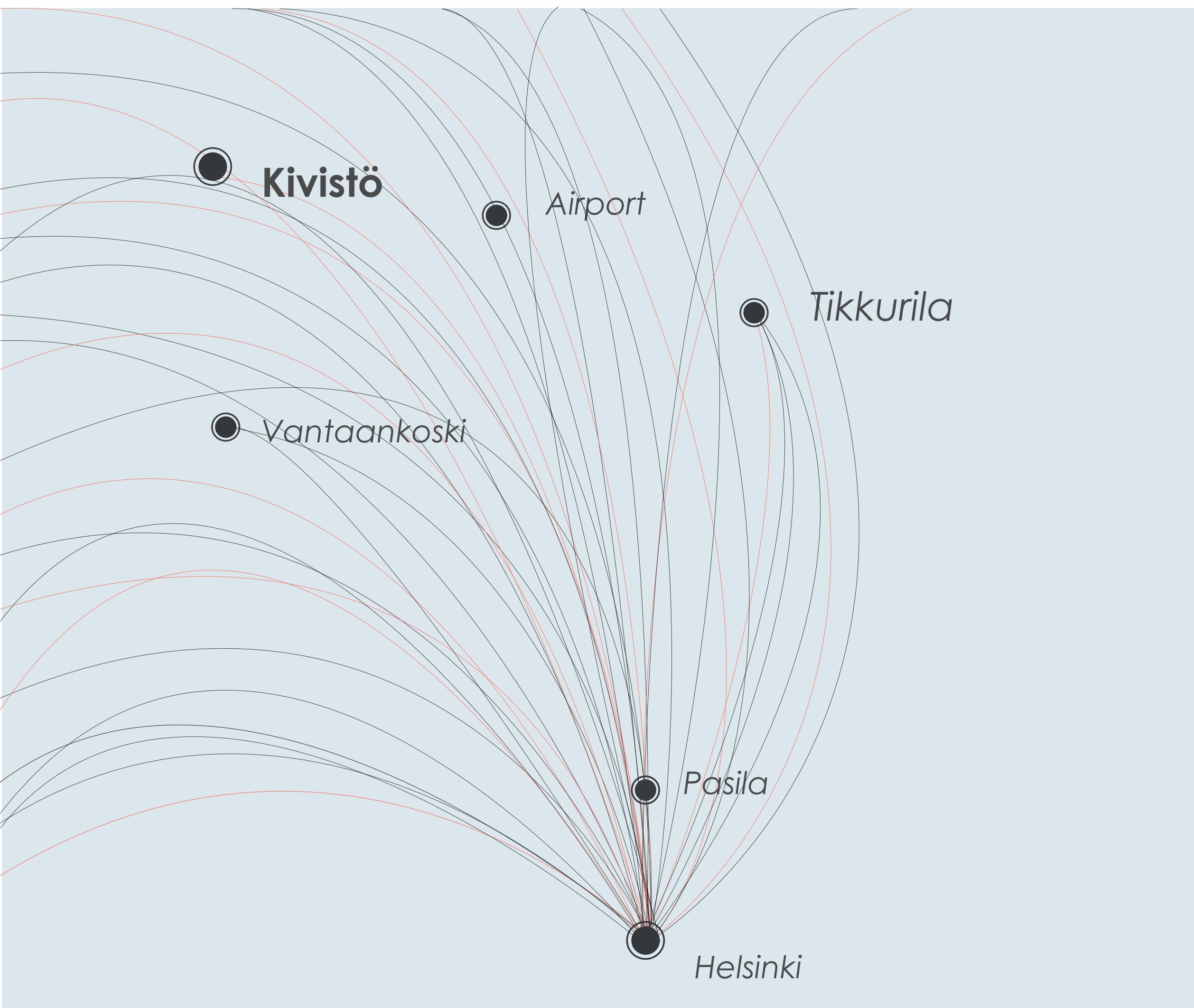


A BIKE FOR A BETTER LIFE.

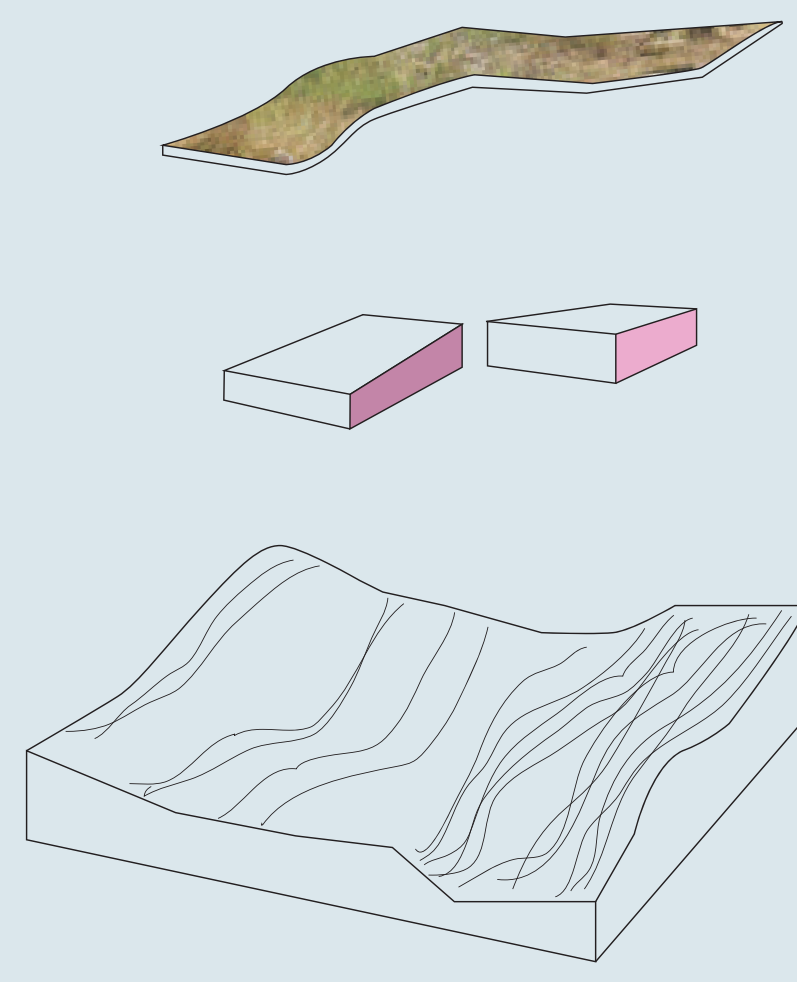
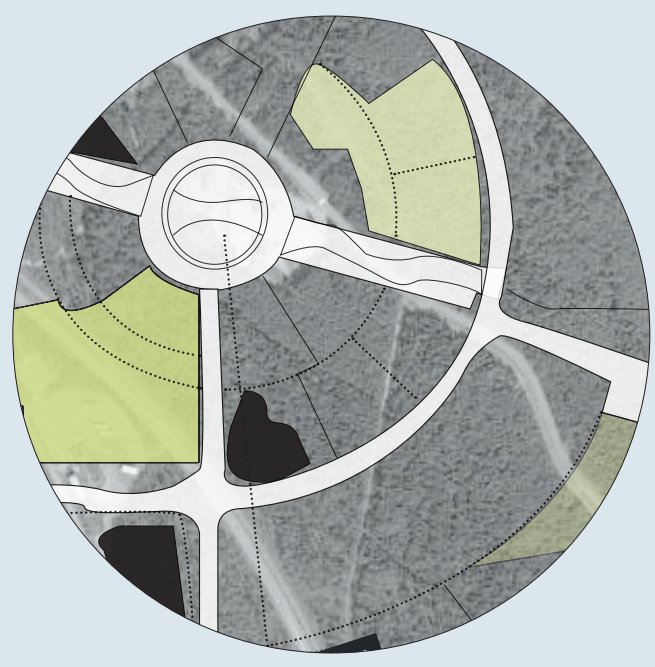
A parking bike in the new Green city Kivistö, Helsinki.



KIVISTÖ AREA

KIVISTÖ is the most significant new residential and working area in the capital region. The area will be home to approximately 30,000 residents and nearly as many new jobs will be created there as well.

The strength of the area lies in its convenient location & transport connections.

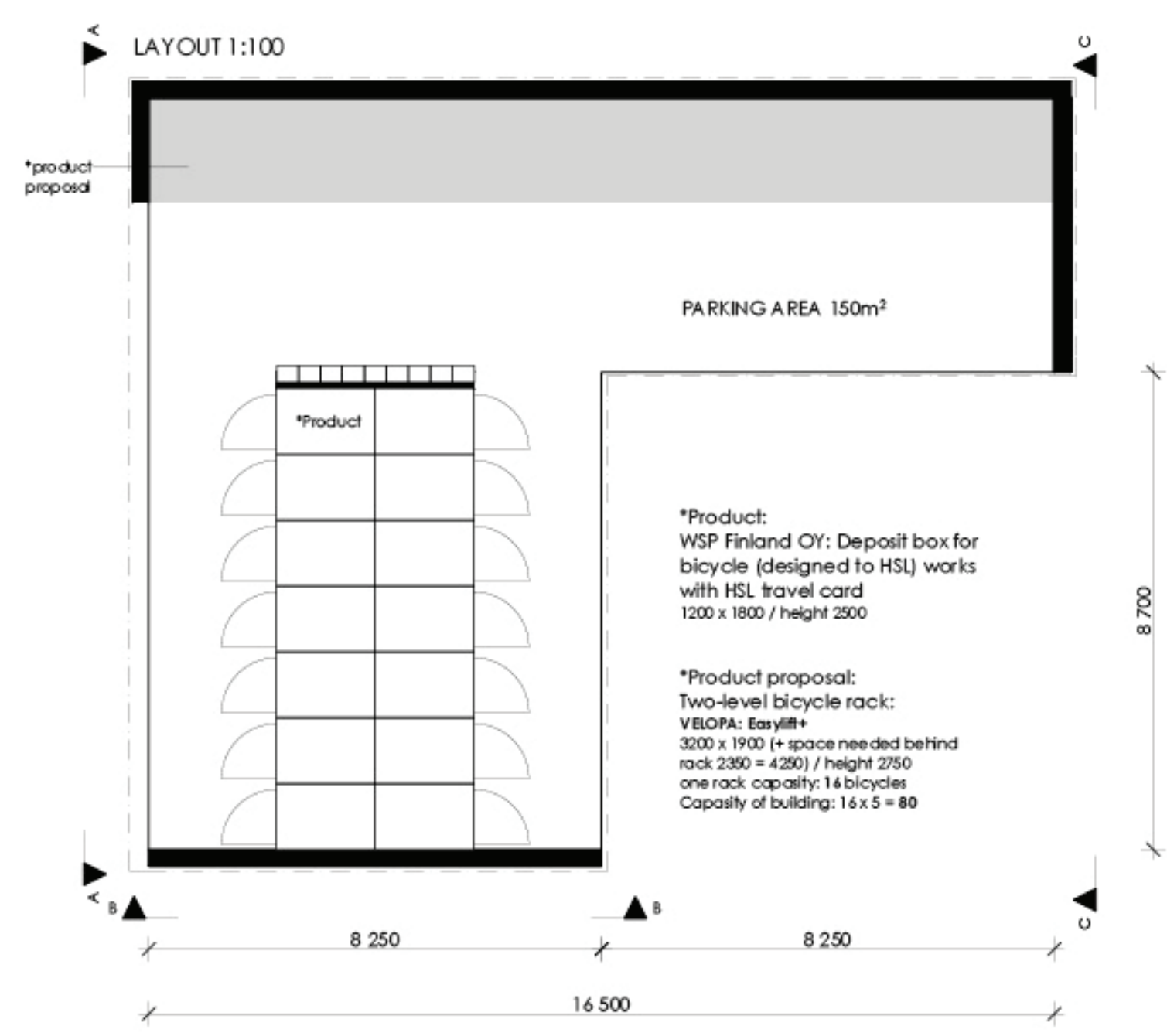
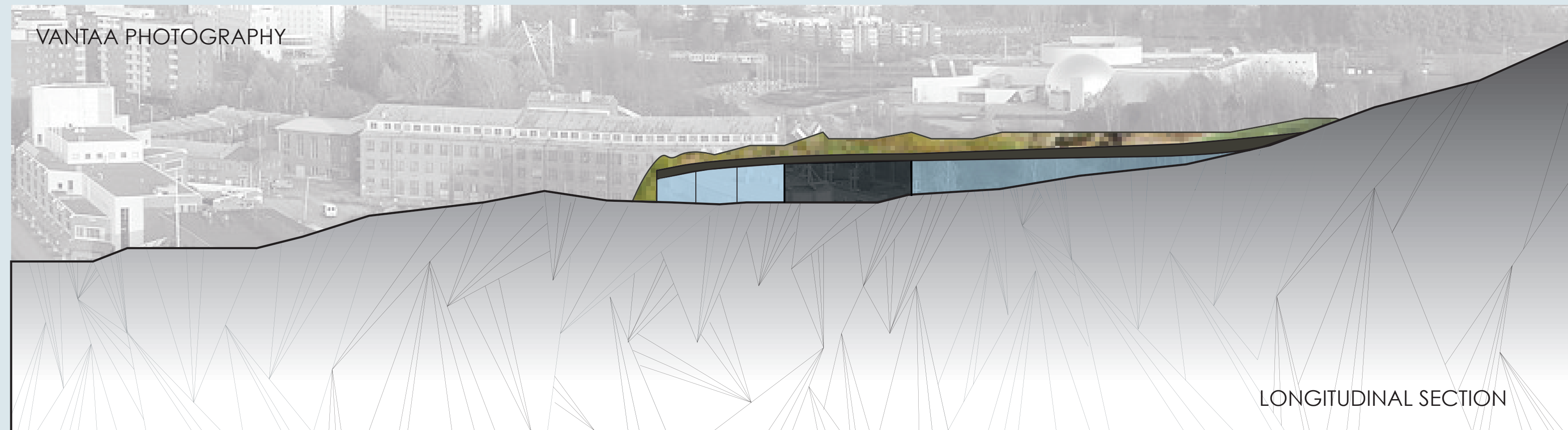
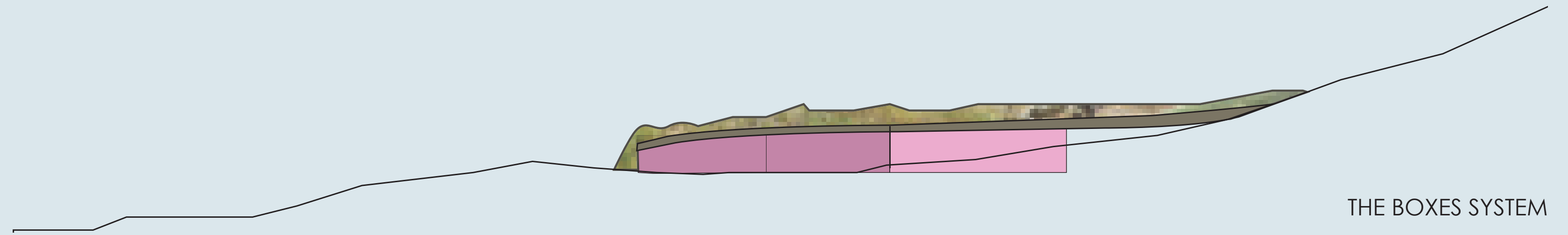


A BIKE FOR A BETTER LIFE.

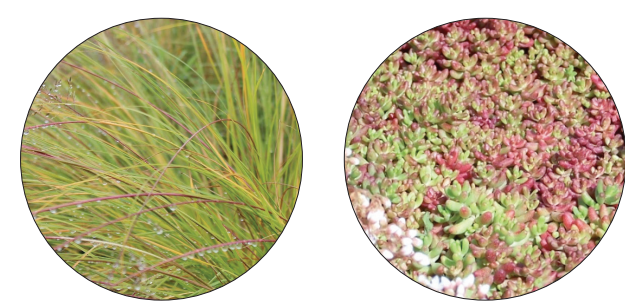
How to make bicycle parking more convenient, safe, intelligent and attractive for people to use in a cycling neighbourhood?

We have noticed that in the city, the bikes are dropped off anywhere onto the sign-posts or in improvised parkings. Indeed, there is a need to have reserved parks bikes for cyclists in strategic spots nearby public transportation & to create colourful landscape, easy to find for people.

Our concept is simple, a convertible option's structure situated to the places where mostly needed (near train stations, event areas, residential areas...), easy to use in winter time as it protects bicycles from rain & snow.



In this concept, it is possible to equip with a regular bike racks or just single bike deposit boxes or both of them.



PLANTS & DIFFERENT SEASONS
Resistant plantation who can resist to extreme climate conditions.



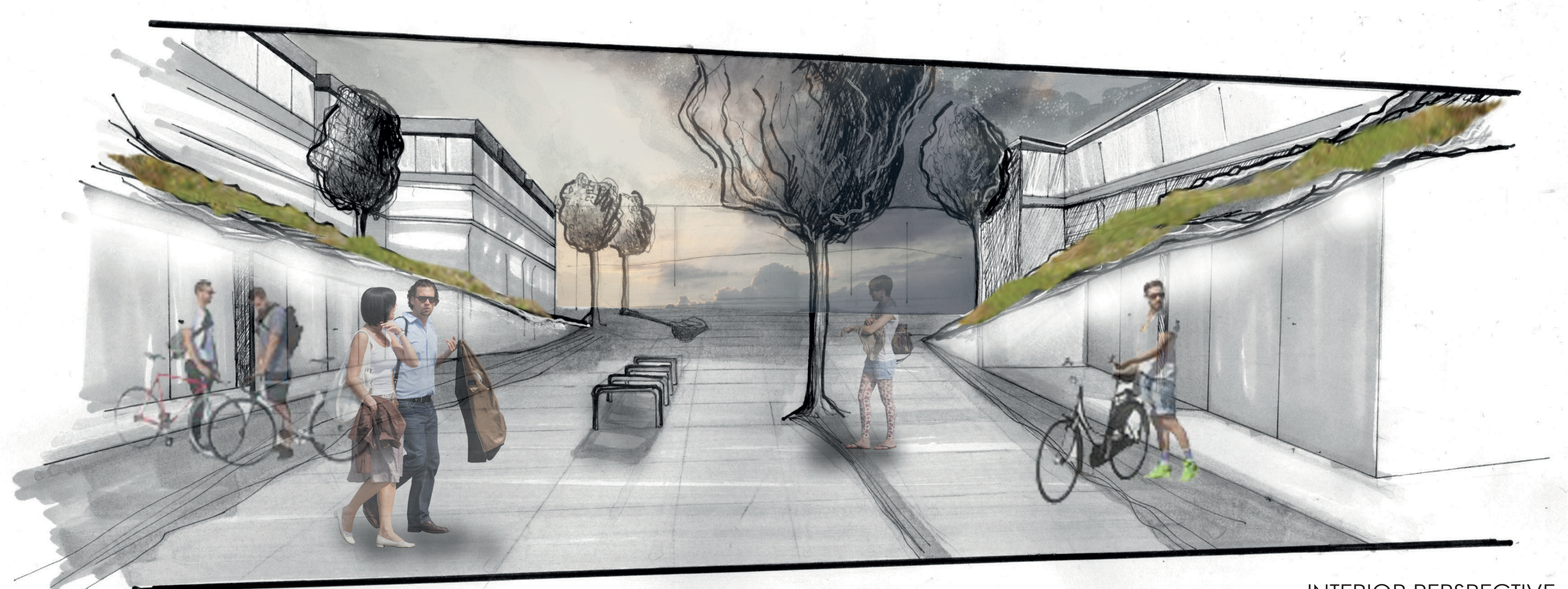
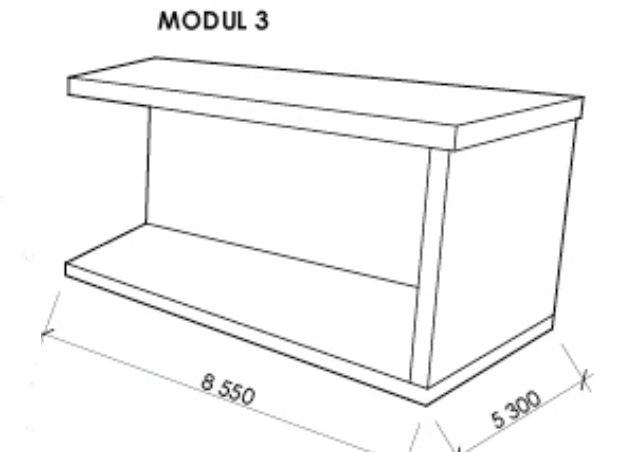
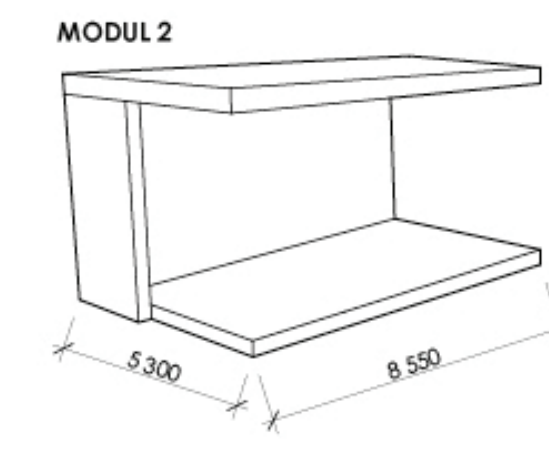
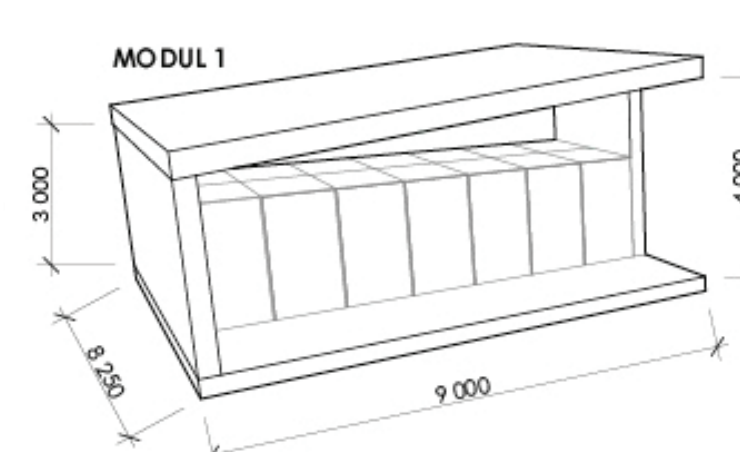
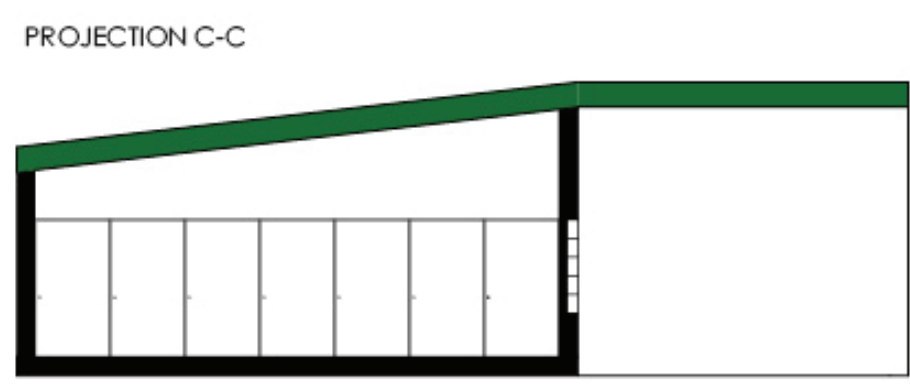
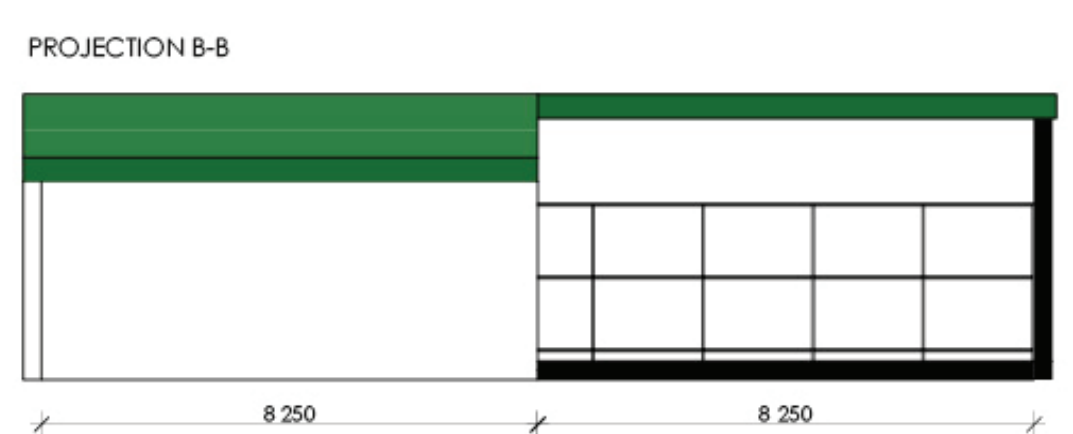
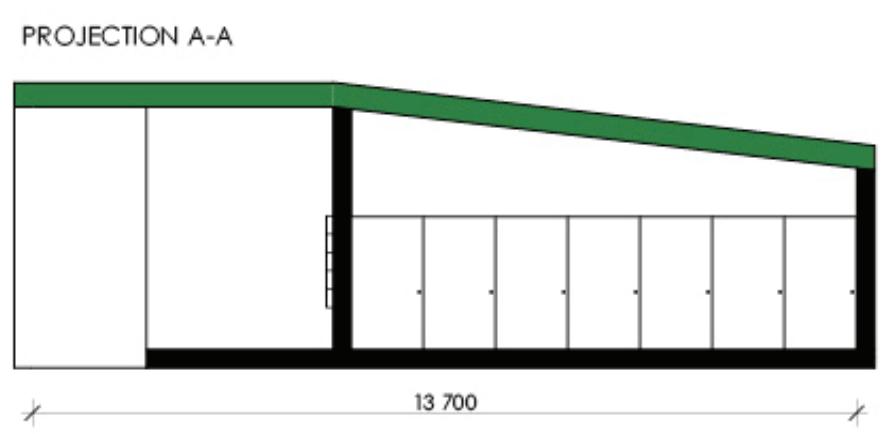
MIRROR
Mirror glass from one side & a window from the other side.



TEXTURAL CONCRETE
Natural colors.



WOOD AND POLYCARBONATE
Atoluminescent thanks to a LED light system supplied thanks to solar panels.



Liro RISTOLA . Laura SCHWARTZBERG . Anni KUNNAS . Iris DEVAIS

