

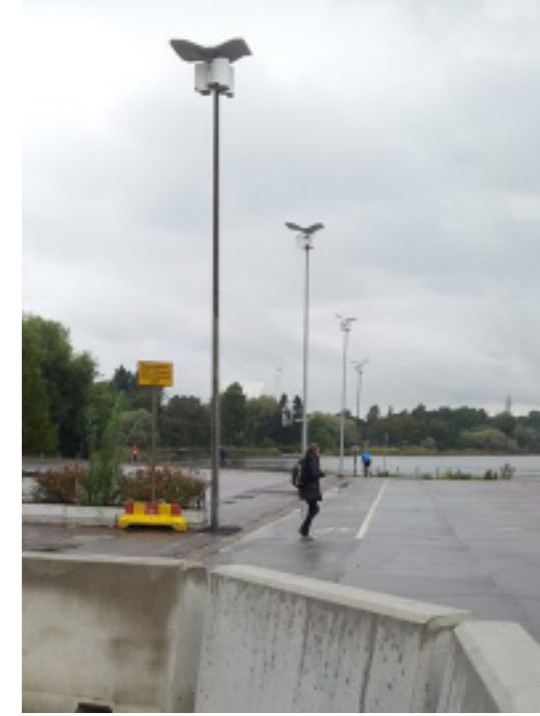
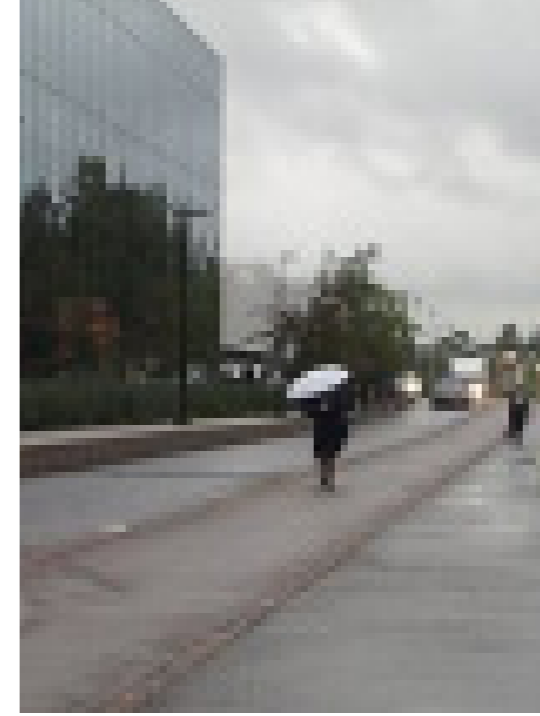


FAILURES AND ERRORS



PATHWAY OBSTRUCTIONS

Several obstructions are along the bike paths in Helsinki. They can be dangerous for cyclists. Many bus stops are in the middle of bike paths or the bike path is between the bus stop and the road. The people getting on and off of the bus cross the bike path without watching for cyclists. Also there are trees that are on the path. The amount of clear pathway beside the tree is sometimes not enough space for two cyclists to pass. Construction can cause uneven terrain on the path and also can have unexpected barriers that can be dangerous.



PEDESTRIAN AND CYCLIST ERRORS

Many cyclists were seen crossing the road when cars and buses were dangerously close to hitting them. This occurred many places where there were not lights at crosswalks. Pedestrians often stand and walk on the bicycle lanes. Sometimes when pedestrians are waiting to cross the crosswalk they stand in a group in the bicycle lane and cyclists must stop until the pedestrians cross the road. Pedestrians also walked across bicycle lanes when it was more convenient than walking around it.

