

School Path Plan of Action

Camilla Rouffiange-Ahmad

Linda van Stiphout

Monica Cota

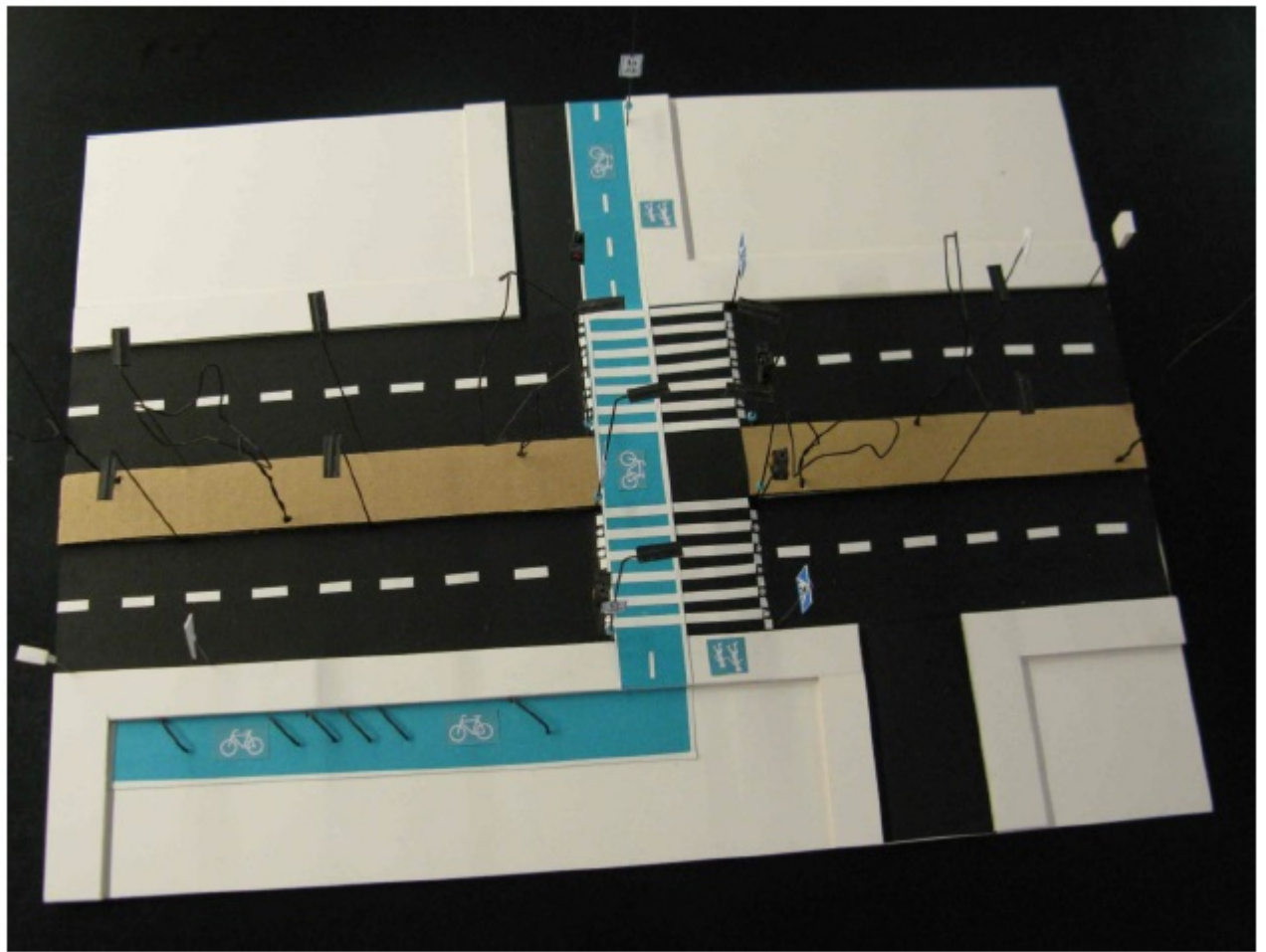
Previous Research

- Conducted by Minna Marttinen, Heli Pakarinen, Eija Zwegyberg

”Our primary aim is to plan safe School Path by studying what kind of things children are scare of or worry about concerning traffic, when they are going to school by bike or by walk. We are also trying to find out how children behave on traffic and the use of security device (especially the lack of use and why it exist), in order to be able to plan right kind of signs by School Path.

The secondary aim is to study how designers can utilize the chosen method, theatre work shops, on their work.”

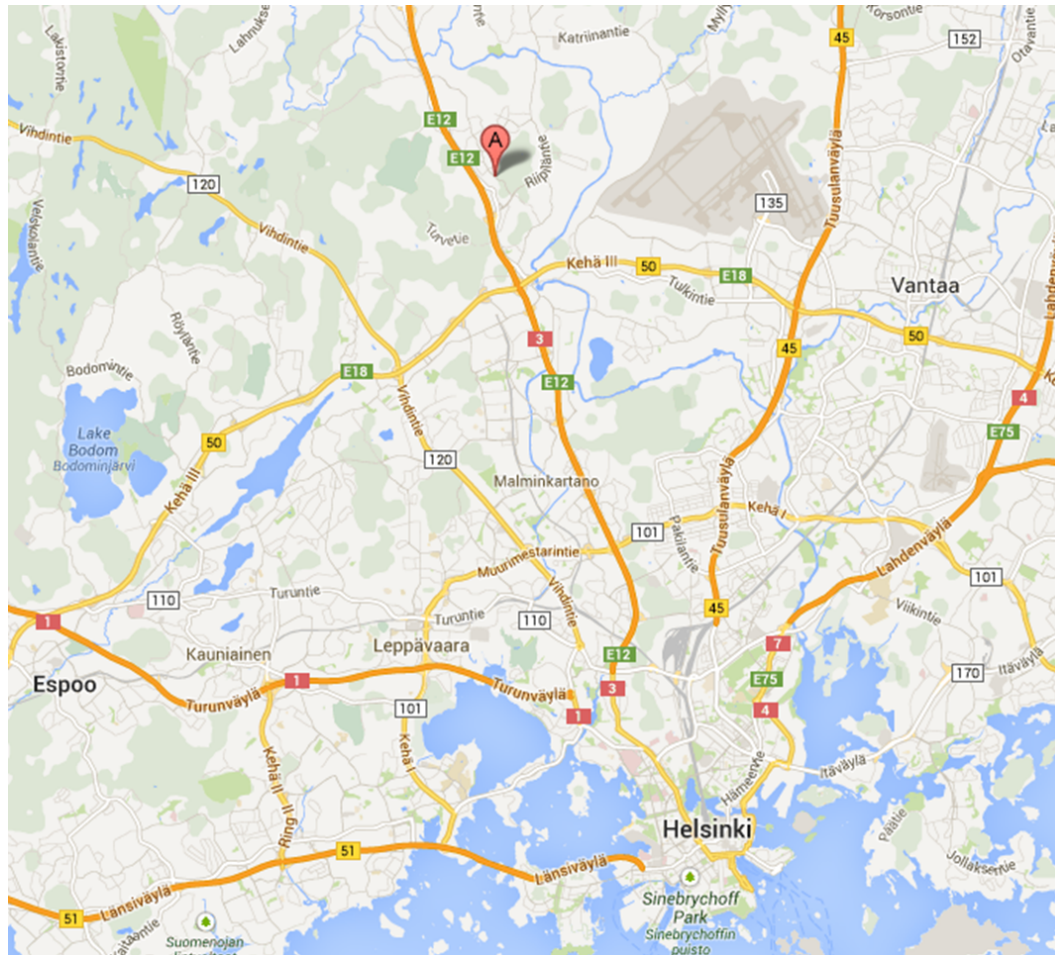




Previous Research

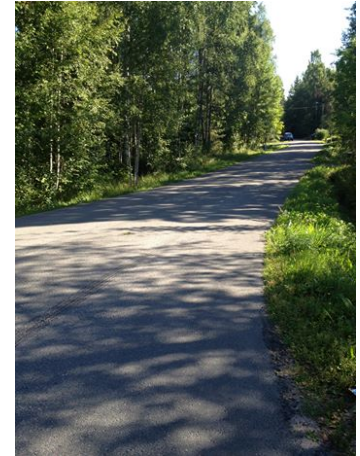
- Research methods:
 - Theatre workshops
 - User profile
- Finding:
 - Some children find the school route scary
 - Some children don't pay attention
 - Lack of safety equipment used
- Manual
 - How to mark the school path so that school children and other road users notice and understand it
 - Safer cross walks and intersections (lights, speed bumps, bridges, under passes)
 - How to make safety equipment cool to use
 - Every autumn a Traffic Awareness Day at the local schools
 - School path tutors

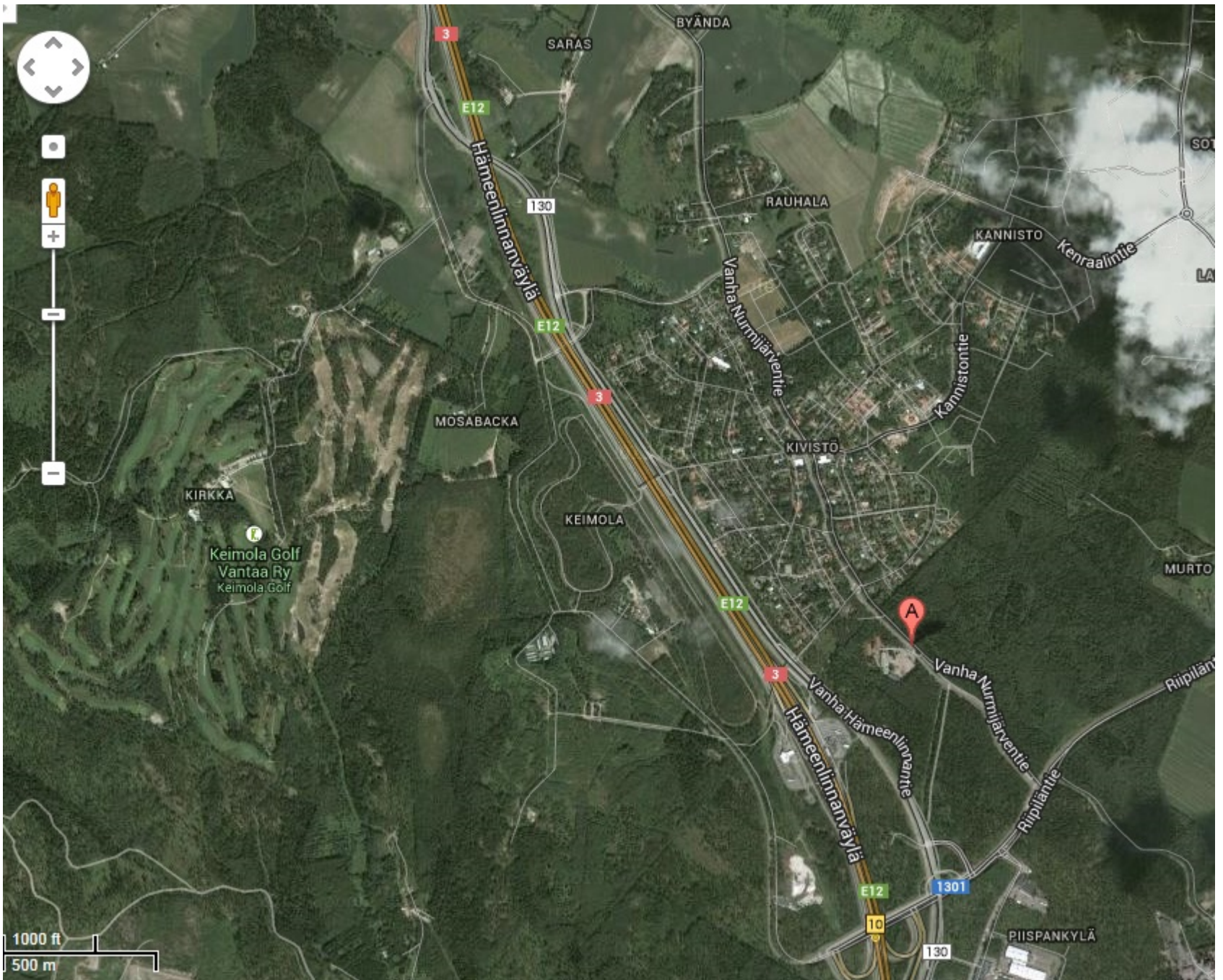
Kivistö



Researching the Area

- Kivistö is in northern Vantaa
- Suburban area with single family houses, gardens and forests
- Small center with a couple of restaurants, food shop, hair dresser.
- Several buses drive through the area
- Some residential areas don't have walk ways.





SARAS

BYÄNDA

130

RAUHALA

KANNISTO

Kenraalintie

MOSABACKA

Vanha Nummijärventie

Kammistontie

KIVISTÖ

KIRKKA

Keimola Golf
Vantaa Ry
Keimola Golf

KEIMOLA

E12

MURTO

Vanha Nummijärventie

Riipiläntie

Vanha Hämeenlinnaväylä

E12

1301

10

130

PIISPANKYLÄ

1000 ft
500 m

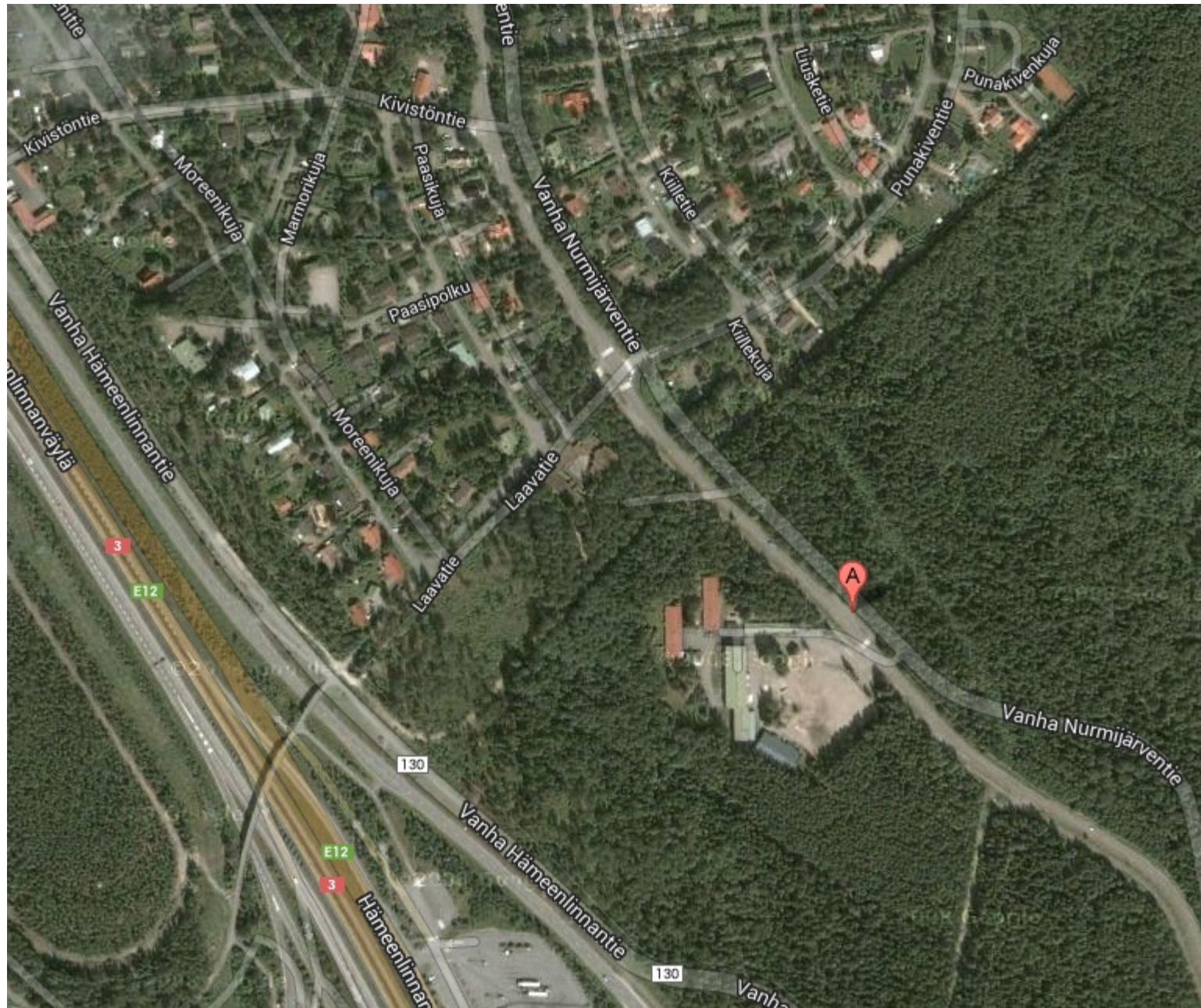
- Lots of construction work in progress and planned for the future
 - (Kehärata) near the school
 - Housing fair 2015
 - Shopping center
 - Estimated that there will be 12 000 – 14 000 people living in Kivistö



Kivistö school

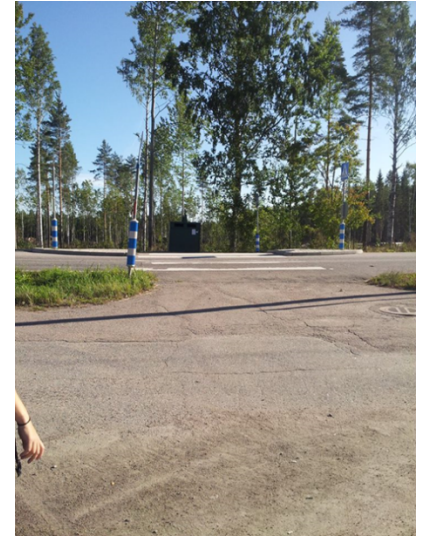
- 250 students between the ages of 6-12 (grades 1-6)
- Established in 1961
- 2002 a extra building was constructed
- Forest near-by





Kivistö School traffic areas

- Small parking place for cars
- No real parking place for bikes
- One entrance for the school for pedestrians, cars and cyclists
- Construction work near the school -> more heavy traffic?
- Bus stops near the school
- Cross roads don't have traffic lights



Methods

- Using the previous work, we plan to implement the school path idea to the Kivistö school area
- Mapping out and researching the school routes used by students
 - How far is their journey
 - What risk factors are one the journey
 - How do children act in the traffic
- Discussing with the school and Vantaa city about concerns
- Finding out what kinds of changes are planned for the area



Outcome

- Map out the school routes and propose ways to make the route safer
- Inform the public and school about the school routes in the Kivistö area
- Informing children of dangerous areas and how to be safe
 - Pamphlet to be given out at school
 - Material to be used on Traffic Awareness Day

Timetable

- **Week 35**
 - Plan of actions
 - Contact school
- **Week 36**
 - Research visibility
 - Research signage
 - Research cross walk safety
 - Research lighting
 - Research speed bumps
 - Research traffic lights
 - See future construction changes
 - School zoning
- **Week 37**
 - Walk route with kids
 - Look for dangerous areas
 - Start map
 - research
- **Week 38**
 - Work on map
 - Research
 - Review findings
- **Week 39**
 - conclusions
 - pamphlet
- **Week 40**
 - Pamphlet
 - Start final powerpoint design
 - Start working on the poster
- **Week 41**
 - Revisions
 - presentation