

SCHOOL PATH



2 JENNY HAAPASAARI PEPPI HIIDENKARI SONJA LEPISTO



Visual

Communal

Functional

Inspire to
move

KEYWORDS:
School path

Year-round

Rousing

Safe

Experimental

Unique



EXCURSIO 4.9

We visited the Kivistö and Kannisto area to have a clear picture of the area, distances and current traffic conditions.

Kivistö school area:

- No traffic lights - dangerous crossings.
- Construction sites **everywhere**.
- No sidewalk except on the main road.

No bike lanes.

Kannisto school area:

- No traffic lights.
- Very child-friendly area.
- Forests and sand roads.
- All children were wearing helmets.

No bike lanes.

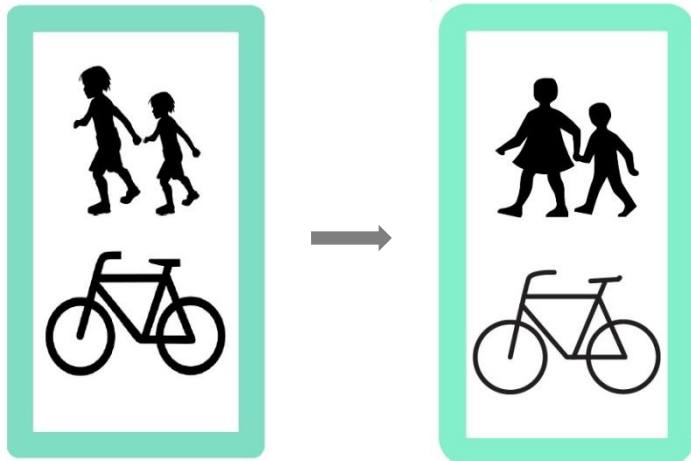


SIGNS

We use **Vantaa Design Manual** for Kivistö area as our guide. For the guideposts we use the signage style that is generally being used in Kivistö area but with our theme color(s).



Below: Old **School Path sign** and our updated version. Design overall stays the same but detail change.



Below: **Schoolbus sign** will be used in designated meeting points where the cycling schoolbus goes.



Below: Sign located in the school path to warn about the **approaching intersection**.



PATH / MATERIALS

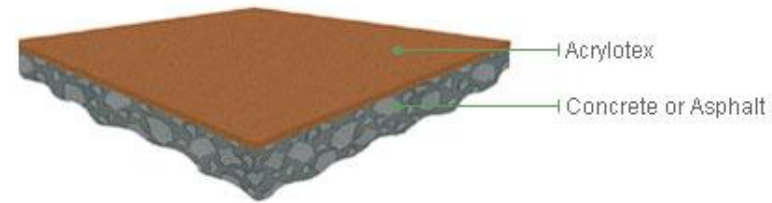
Built-in heating system integrated in the path

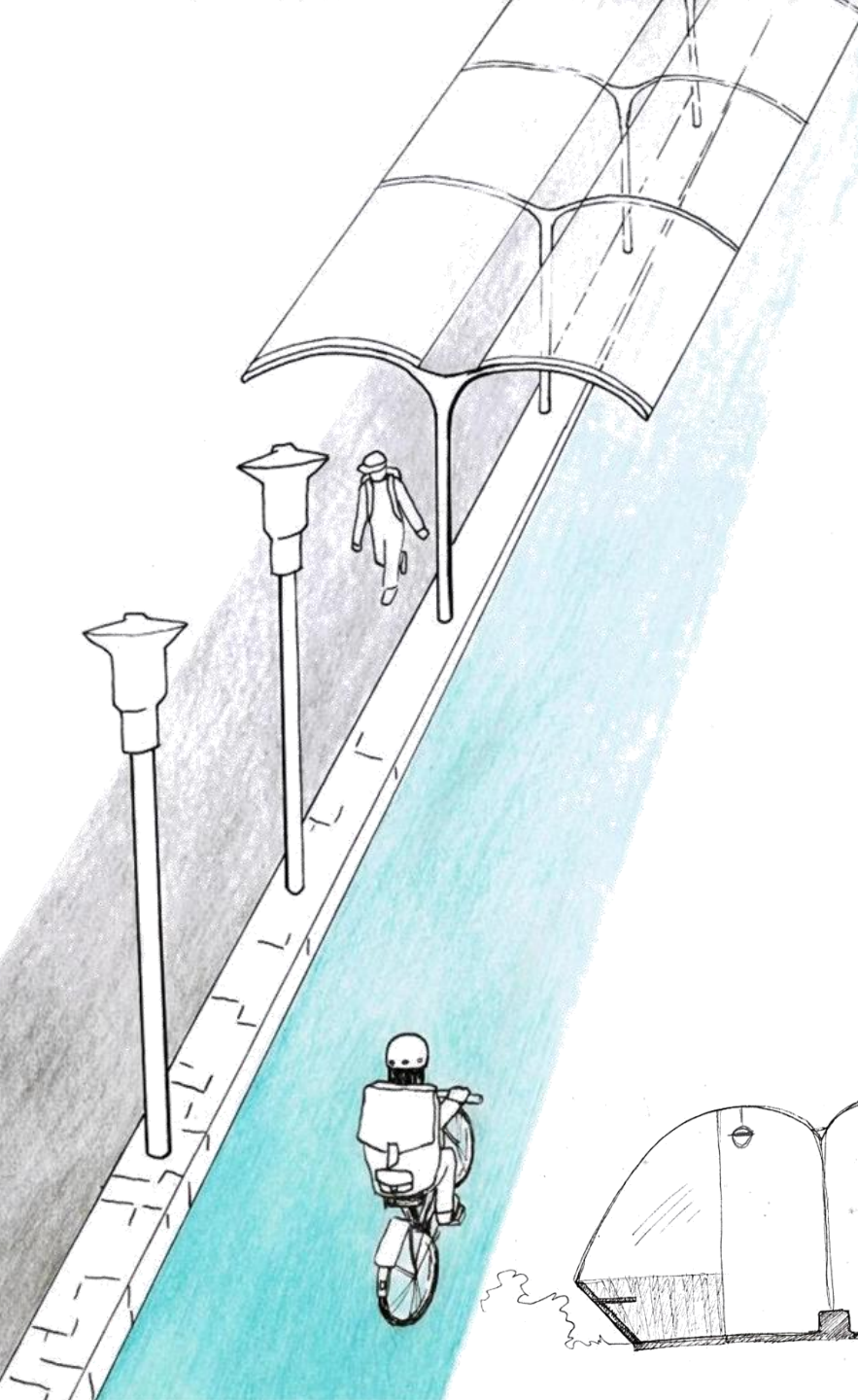
keeps the path clear of ice and snow.

- Might inspire to cycle to school in winter also.
- Comes cheap in time; Sanding and salting ground costs a lot and isn't good for environment.
- Other pedestrians f.ex senior citizens could also benefit from the safe and well maintained path

For the path's coating we use **Acrylotex** which is designed for use on asphalt and concrete surfaces.

- Durable and slip resistant surface.
- Much more permanent than paint.





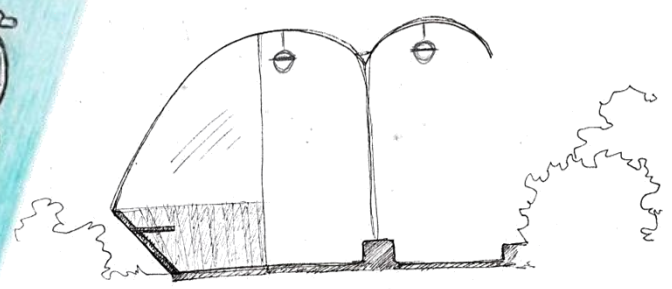
COVERED PATH

Main path will be covered with **polycarbonate** roof.

- Affordable and durable.
- Path is attractive even on bad weather and winter.

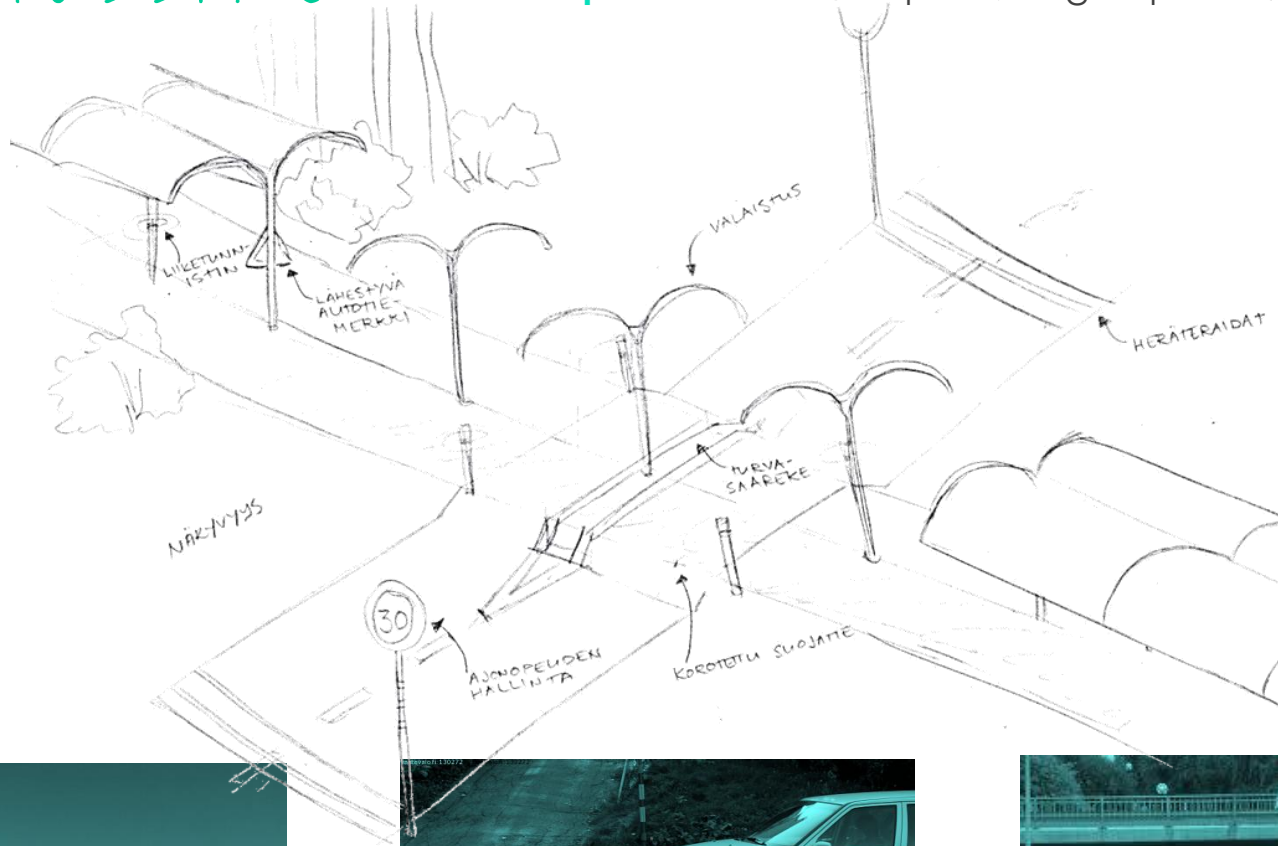
RESTING POINT?

Sheltered seating areas with a trash can and a fixed bike pump. These Resting points could double as **cycling schoolbus stops** and **meeting points**.



CROSSING

Defining the **key elements** to safe intersection. If possible, we plan the route to have less crossings. We prefer **overpasses** and **underpasses**. Based on previous groups work.



PATH ROUTE

Below: **Circle-model.**

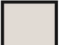


Simplified and minimalist way to plan the route. Replicates the circles planned for the Kivistö center area.

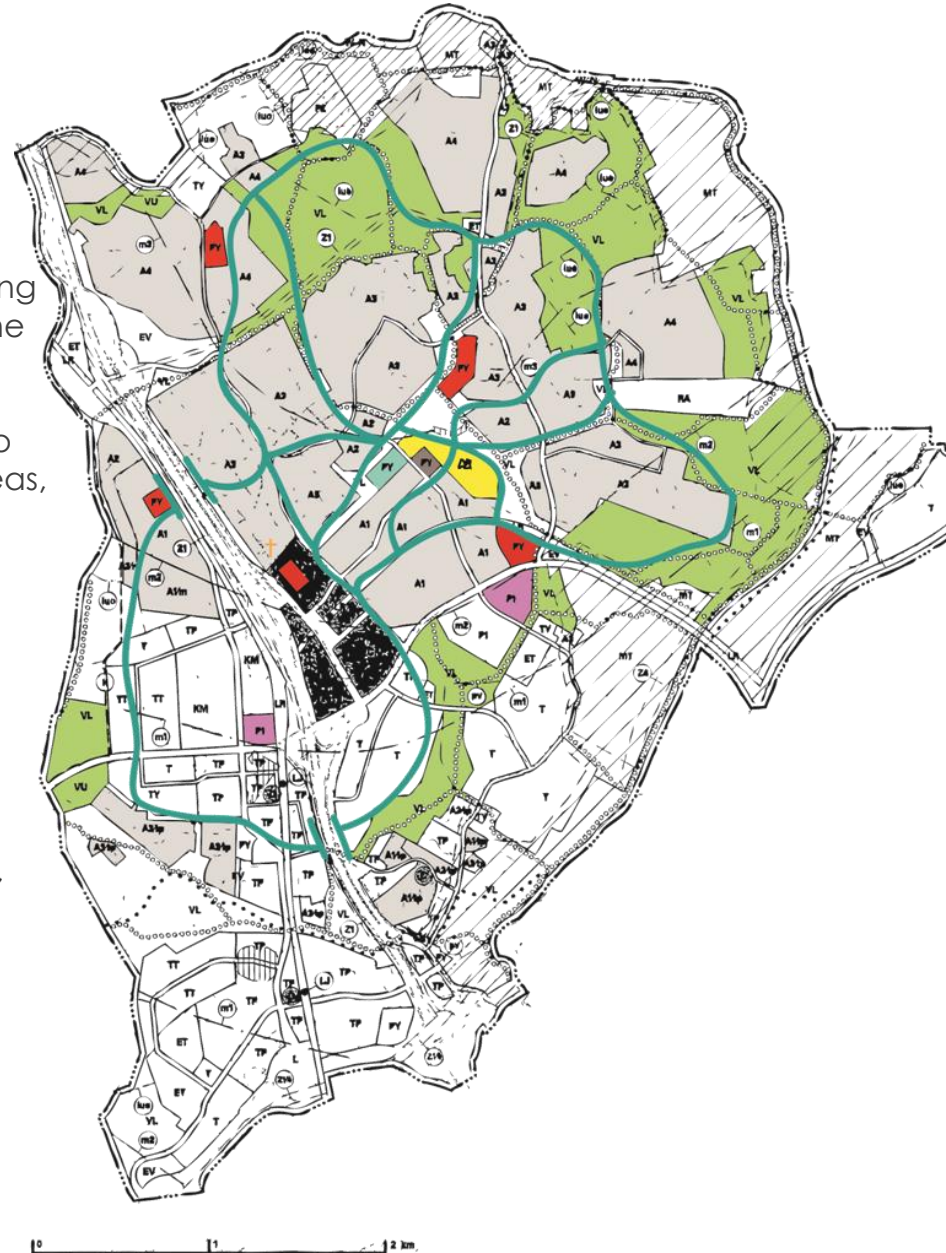
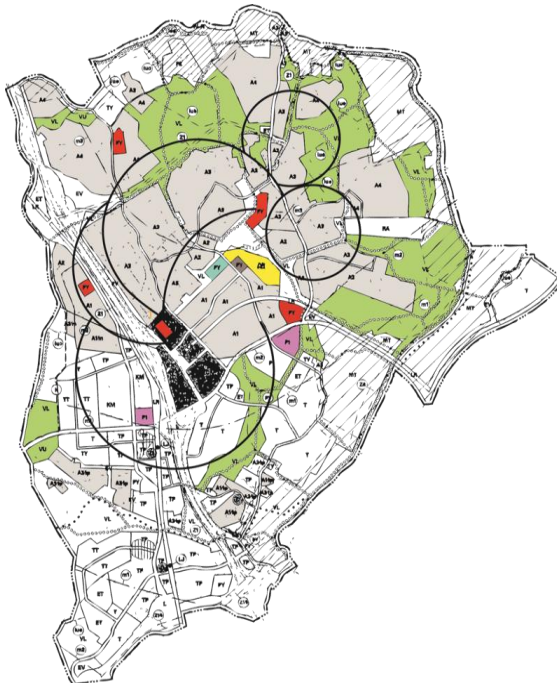
Best used if it's not possible to build as comprehensive School Path network, since it's not as accessible everywhere.

Right: **The ideal scenario.**

Map showing the most important locations concerning the path. Map is based on the future blueprint.

Turquoise route is designed to serve as many residential areas, schools and after school activities as possible.

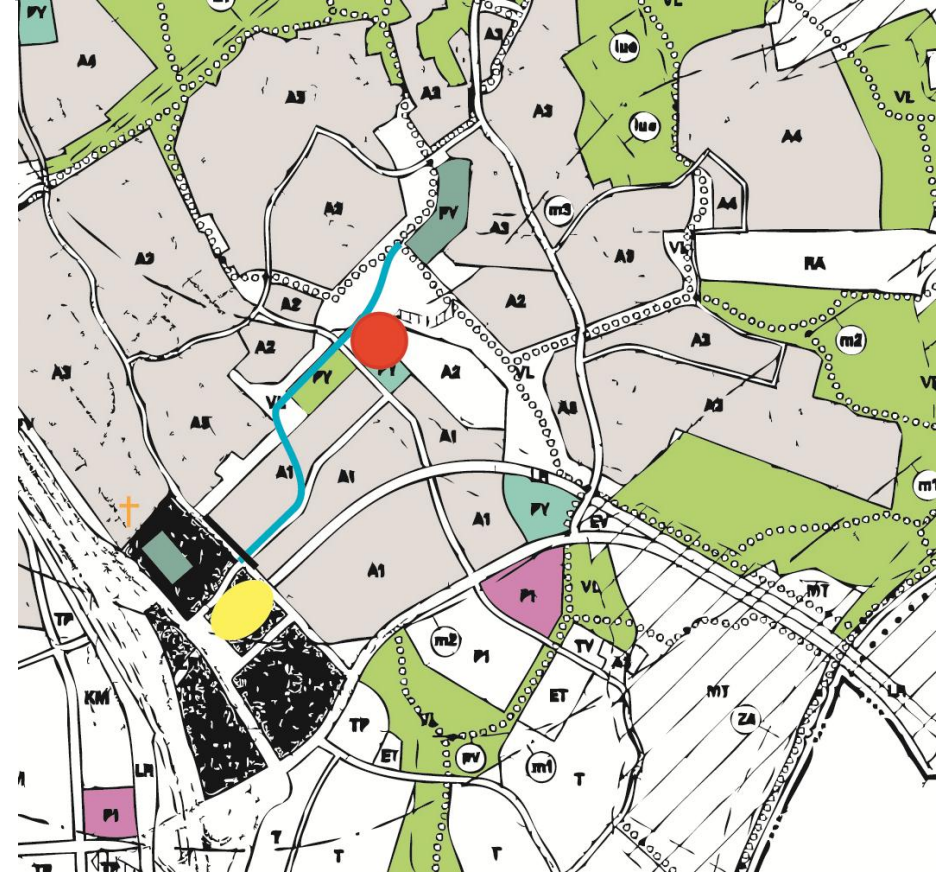
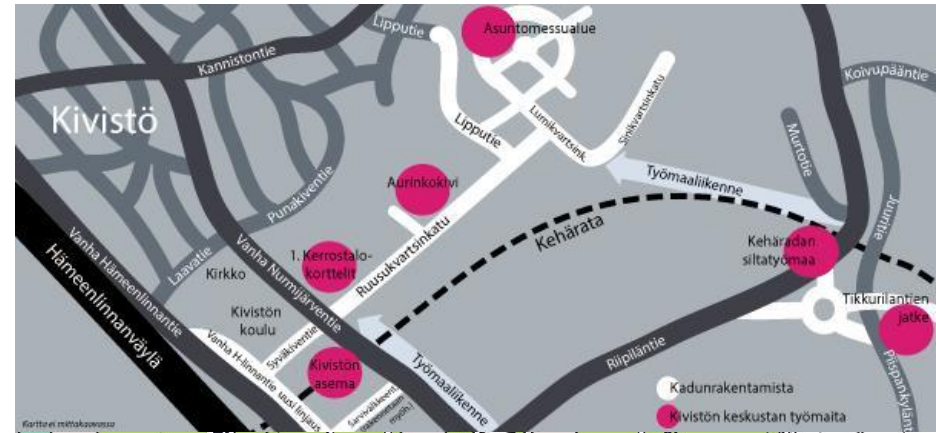
-  Residential area
-  Outdoor activities area
-  Sports center
-  School
-  Housing fair area 2015
-  Kivistö center



HOUSING FAIR 2015

The main path is based between Kannisto school and Kivistö station. It passes through the housing fair area. By the road there is also the sports field and playground.

When the path goes past the Housing Fair area it will follow the instructions made for the area. F.ex the area has specific ideas on how art should be a major part of the overall design.



- SCHOOL PATH
- HOUSING FAIR AREA
- KIVISTÖ STATION

VARIABLE & MULTIFUNCTIONAL

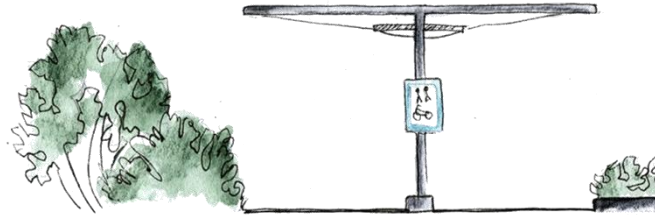
- At this stage of the project, it's unknown what part Vantaa city wants in this project. We'll get more information in the meeting with Director of planning, Lea Varpainen. That's partly why the plan is very flexible.
- The path is designed in way that allows it to be **modified easily**. The planned concept works even if some elements are left out f.ex budget reasons.
- Path must be **multifunctional** to serve the most of the community.
- The target group has been expanded. **Updated target group:**
 - School children
 - Parents taking their kids to kindergarten
 - Senior citizens
 - Joggers

PATH CATEGORIES

I. School path, in peaceful area

II. School path + pedestrian lane

- Pedestrian lane, increased paving, cycle lane.
- Coated path, integrated heating system, lighting, resting stops.



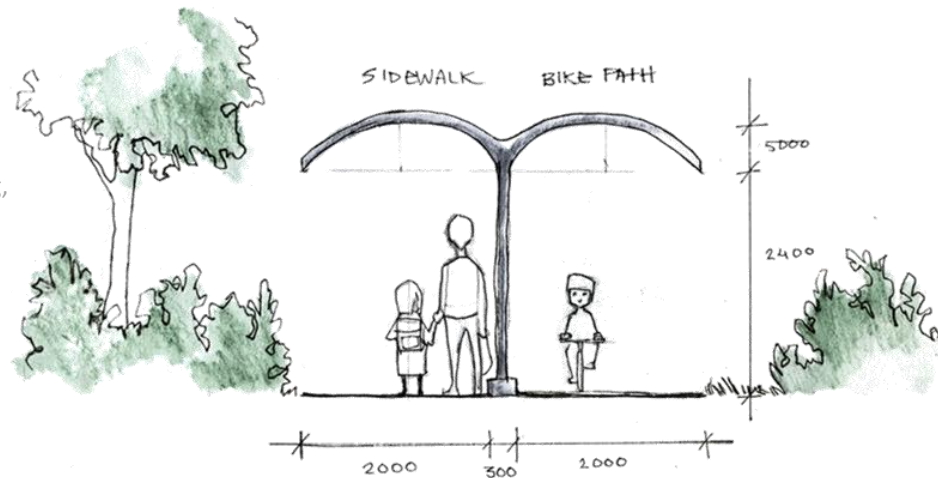
III. School path + pedestrian lane + light traffic lane

- Pedestrian lane, increased paving, cycle lane, buffer zone, traffic lane.
- Coated path, integrated heating system, lighting, resting stops.



IV. School Path "Baana"

- Wide pedestrian lane, increased paving, wide cycle lane.
- Covered & coated path, integrated heating system, lighting, resting stops.



THANK YOU & QUESTIONS?

