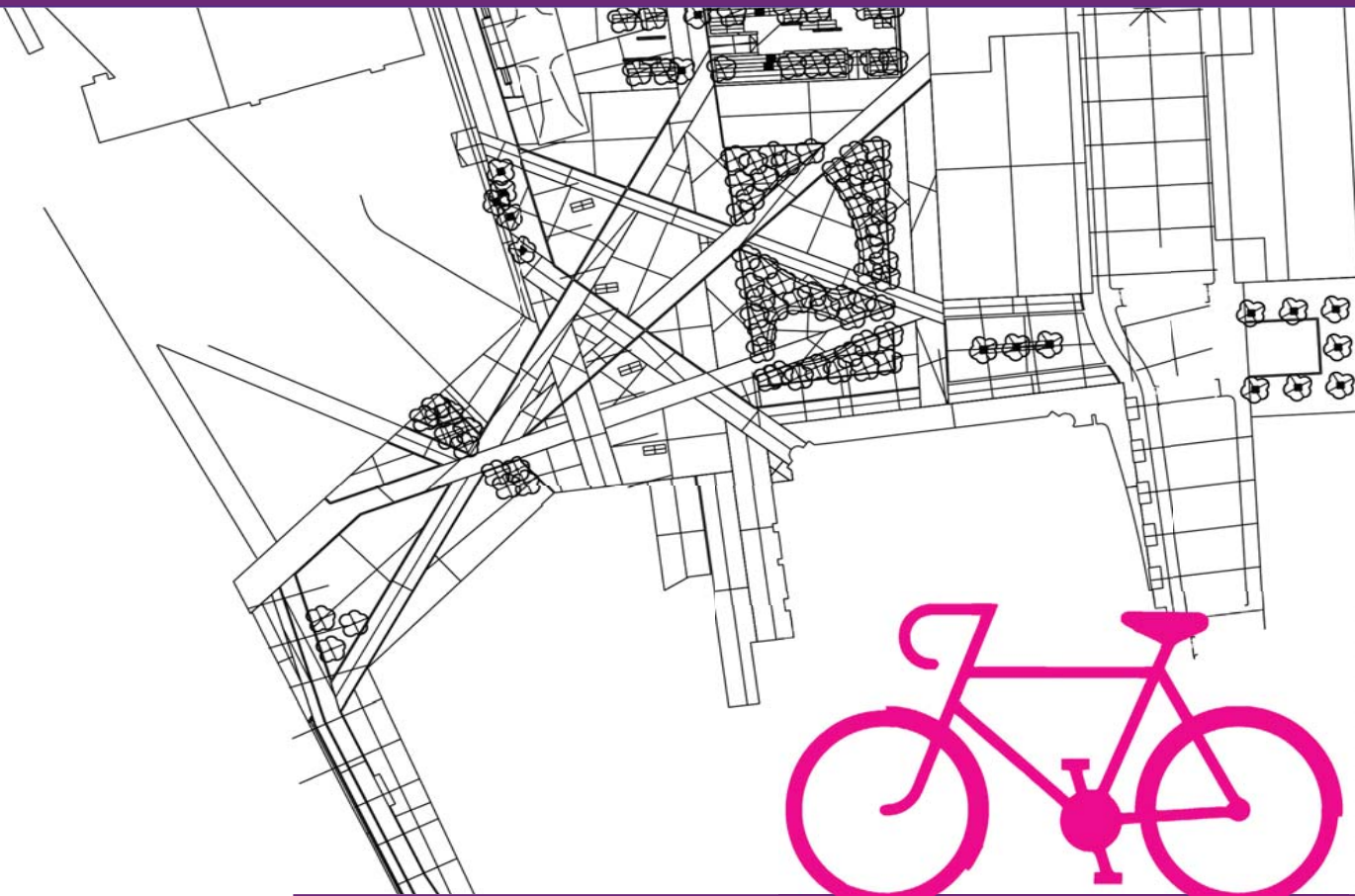




BICYCLE CENTER 2.0







ELINA NIEMI
ALEKSANDR PYLSY
TOMAS PELTOLA
AARO KURKELA



10.10.2013 LIIKKUVAN ARJEN DESIGN



CONTENTS

	BICYCLE CENTER 1.0
	RESEARCH
	LOCATION
	INSPIRATION
	BICYCLE CENTER 2.0
	TEMPORARY CENTER



BICYCLE CENTER 1.0

THE BICYCLE CENTER IS A FREE BIKE-REPAIR AND INFORMATION CENTER FOR THE COMMUNITY, RUN BY THE CITY OF HELSINKI. A CENTRALIZED FACILITY FOR BOTH ENTHUSIASTIC AND OCCASIONAL CYCLISTS. THE CURRENT CENTER IS A SMALL TEMPORARY STRUCTURE AT NARKINKKATORI, KAMPPI. IT HAS BEEN RUNNING FOR TWO YEARS AND HAS RECEIVED POSITIVE FEEDBACK FROM ITS USERS.



BICYCLE CENTER 2.0



BICYCLE CENTER 1.0

THE KEY FEATURE OF THE CENTER IS THAT IT IS FREE. PEOPLE REPAIR AND MAINTAIN THEIR BIKES THEMSELVES AND THE STAFF IS THERE TO GUIDE THEM. THIS MAKES THE CENTER USER FRIENDLY AND APPROACHABLE.



BICYCLE CENTER 2.0

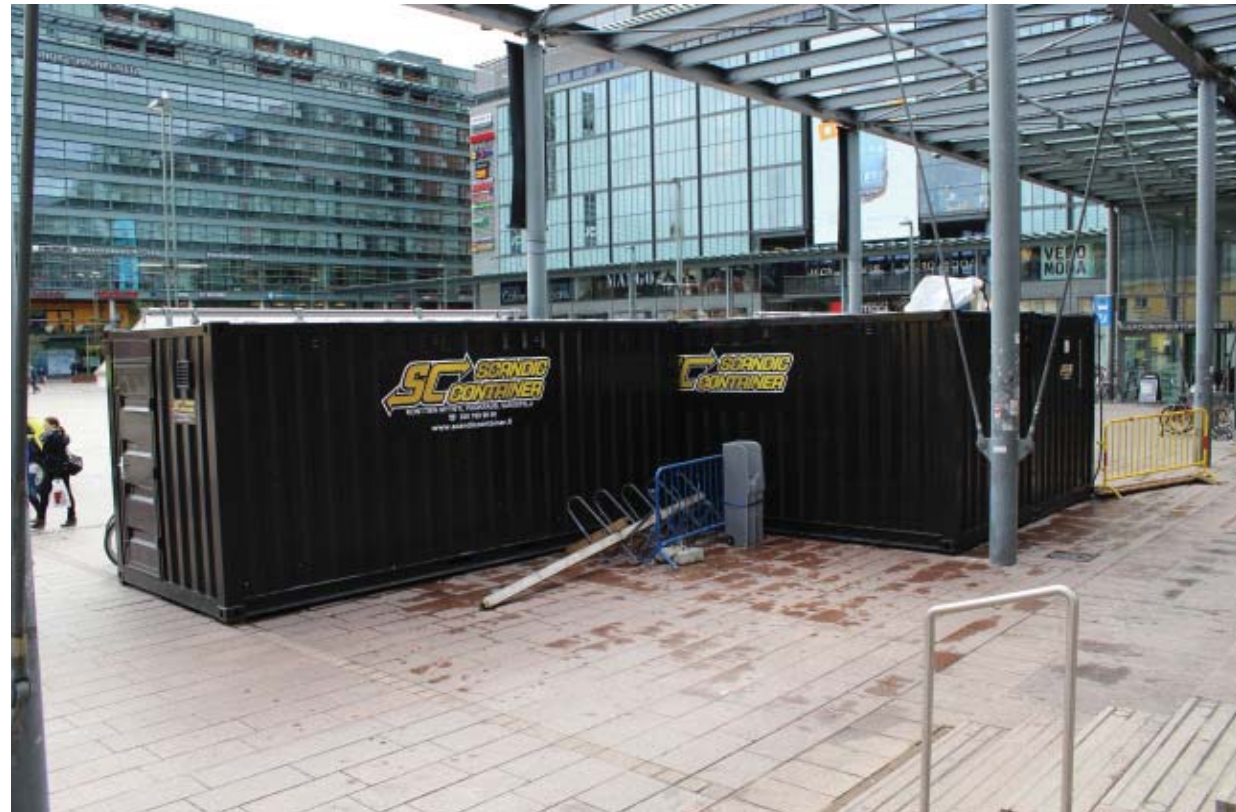


BICYCLE CENTER 1.0

THE USER SURVEY OF THE BICYCLE CENTER CONFIRMED THE NEED FOR THE CENTER WHILE REVEALING ISSUES THAT SHOULD BE IMPROVED IN THE NEXT VERSION.

THE CURRENT CENTER IS TOO SMALL AND LACKING IN STORAGE- AND WORK-SPACE, WATER OUTLETS AND TOILETS. THE LOCATION IS TOO URBAN, A LESS BUSY LOCATION WOULD BE MORE SUITABLE FOR CYCLISTS.

THE CENTER DOES NOT STAND OUT FROM ITS SURROUNDINGS, PEOPLE SIMPLY WALK OR DRIVE BY WITHOUT NOTICING IT.



BICYCLE CENTER 2.0



RESEARCH

A FEW EXAMPLES OF BICYCLE CENTERS FROM AROUND THE WORLD. MOST ARE PART OF A SHOP OR EXISTING BUILDING. THE CENTERS THAT ARE SEPARATE BUILDINGS TAKE THE OPPORTUNITY TO BE CREATIVE AND INVITING.



MILLENNIUM PARK BIKE STATION



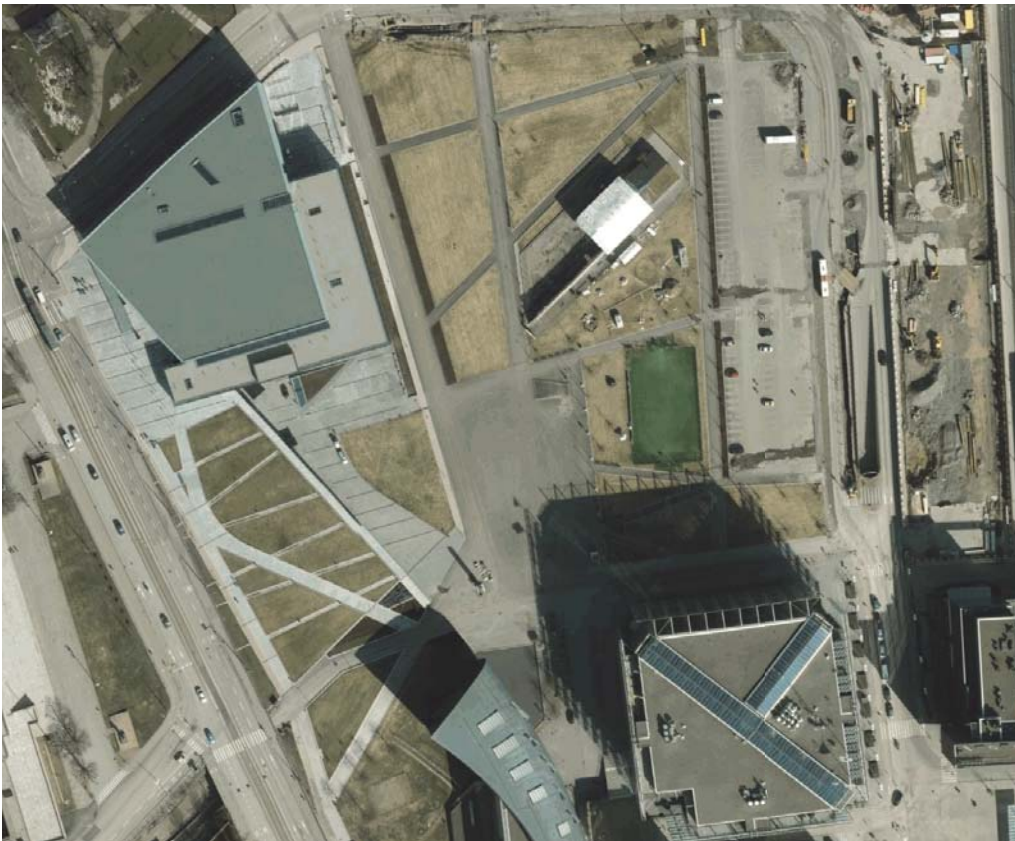
WASHINGTON BIKESTATION

BICYCLE CENTER 2.0



LOCATION

WE PROPOSE A NEW BETTER LOCATION FOR THE NEW CENTER. THE NORTH SIDE OF CITIZEN SQUARE WHICH IS CONVENIENTLY LOCATED IN THE INTERSECTION OF SEVERAL BIKE-ROUTES, ESPECIALLY THE SCENIC BAANA-ROUTE AS WELL AS BEING CLOSE TO THE CENTRAL RAILWAY STATIONS PUBLIC TRANSPORT HUB.

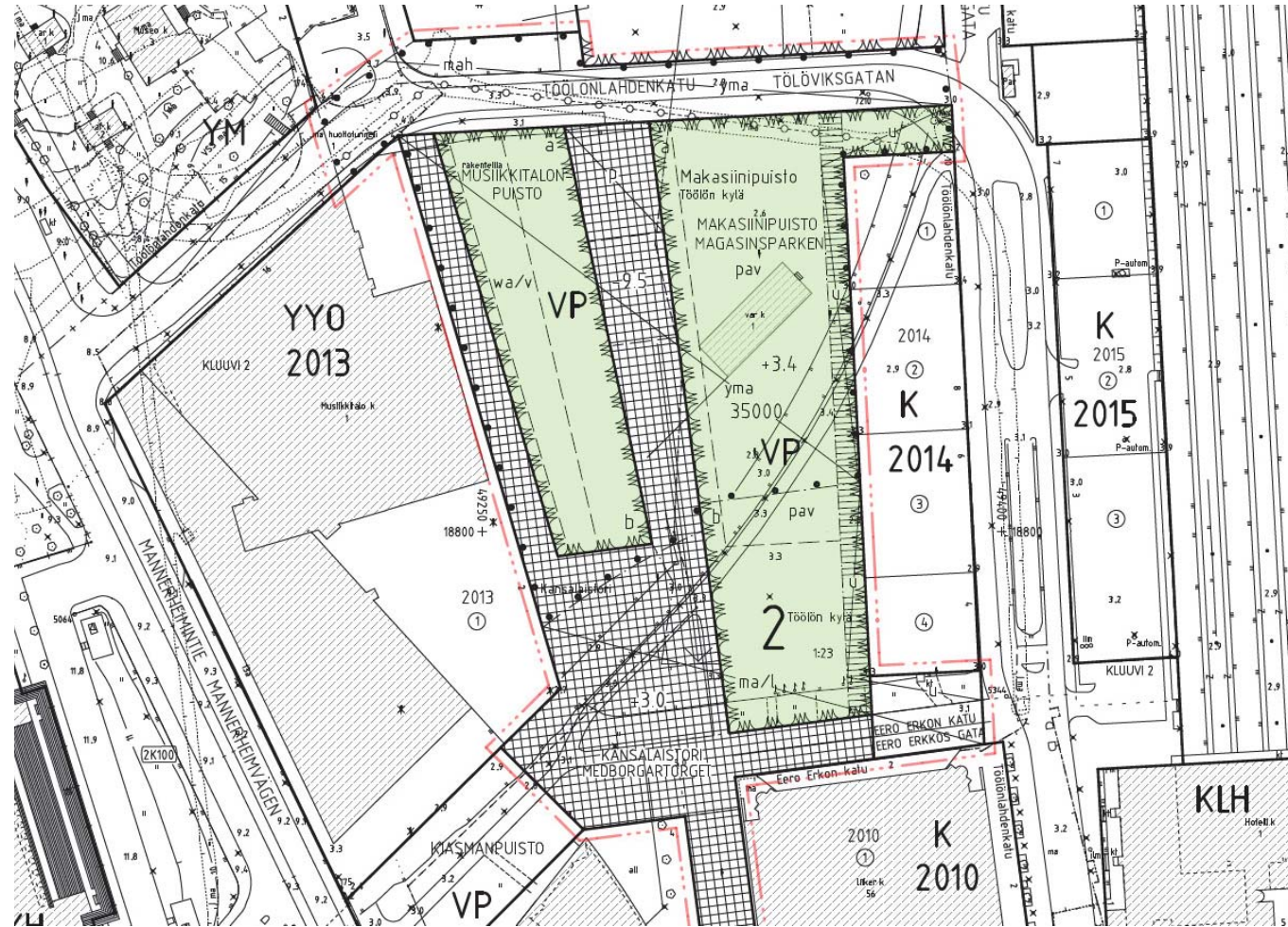


BICYCLE CENTER 2.0



LOCATION

CITIZEN SQUARE IS OFTEN USED FOR PUBLIC CONCERTS AND EVENTS FOR THE COMMUNITY. THE NORTH SIDE OF THE AREA IS CURRENTLY RARELY USED AND IN A STATE OF ABANDONMENT. IN THE NEAR FUTURE IT WILL BE THE SITE FOR THE CENTRAL LIBRARY OF HELSINKI AND AN EXPANSIVE FINLANDIA-PARK. THE SQUARE WILL BE MADE INTO A HUB FOR SOCIAL GATHERINGS AND EVENTS. THE BICYCLE CENTER WOULD CERTAINLY FIND ITS PLACE HERE. ESPECIALLY IF IT COULD MAKE USE OF WHATS ALREADY THERE...



BICYCLE CENTER 2.0



LOCATION



PHOTOS BY ALEKSANDR PYLSY

BICYCLE CENTER 2.0



LOCATION

THE VR-WAREHOUSES WERE STORAGE WAREHOUSES FOR THE RAILWAY, LATER ADAPTED FOR HOUSING GRASSROOT EVENTS, GALLERIES AND SHOPS. IN 2006 THE WAREHOUSES WERE BADLY DAMAGED IN A FIRE AND ONLY A SMALL SURVIVING PORTION WAS LEFT TO STAND. THE RUINS ARE CURRENTLY ABANDONED AND FACE DEMOLITION UNLESS A USE FOR THEM IS FOUND.

WE PROPOSE INCORPORATING THE WAREHOUSE RUINS IN THE NEW BICYCLE CENTER BUILDING. THERE IS PLENTY OF SPACE FOR THE CENTER IN THE FOOTPRINT OF THE WAREHOUSES.

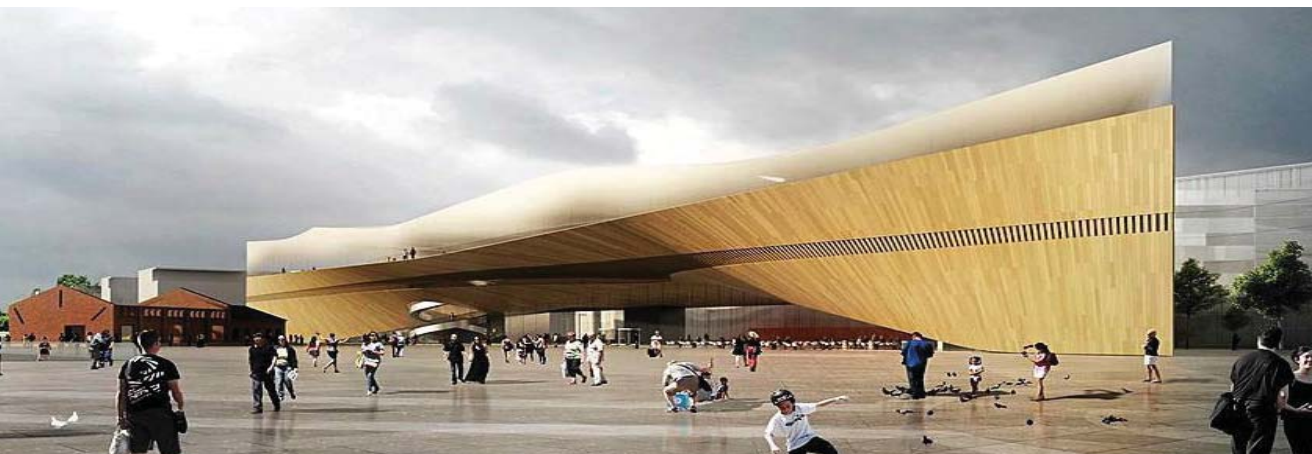
THIS SOLUTION WOULD TURN AN EMBARRASSING RELIC ON ONE OF THE MOST REPRESENTATIVE OF HELSINKI'S PUBLIC SQUARES INTO A PROUD AND INSPIRATIONAL EXAMPLE OF ADAPTIVE REUSE.



BICYCLE CENTER 2.0



INSPIRATION

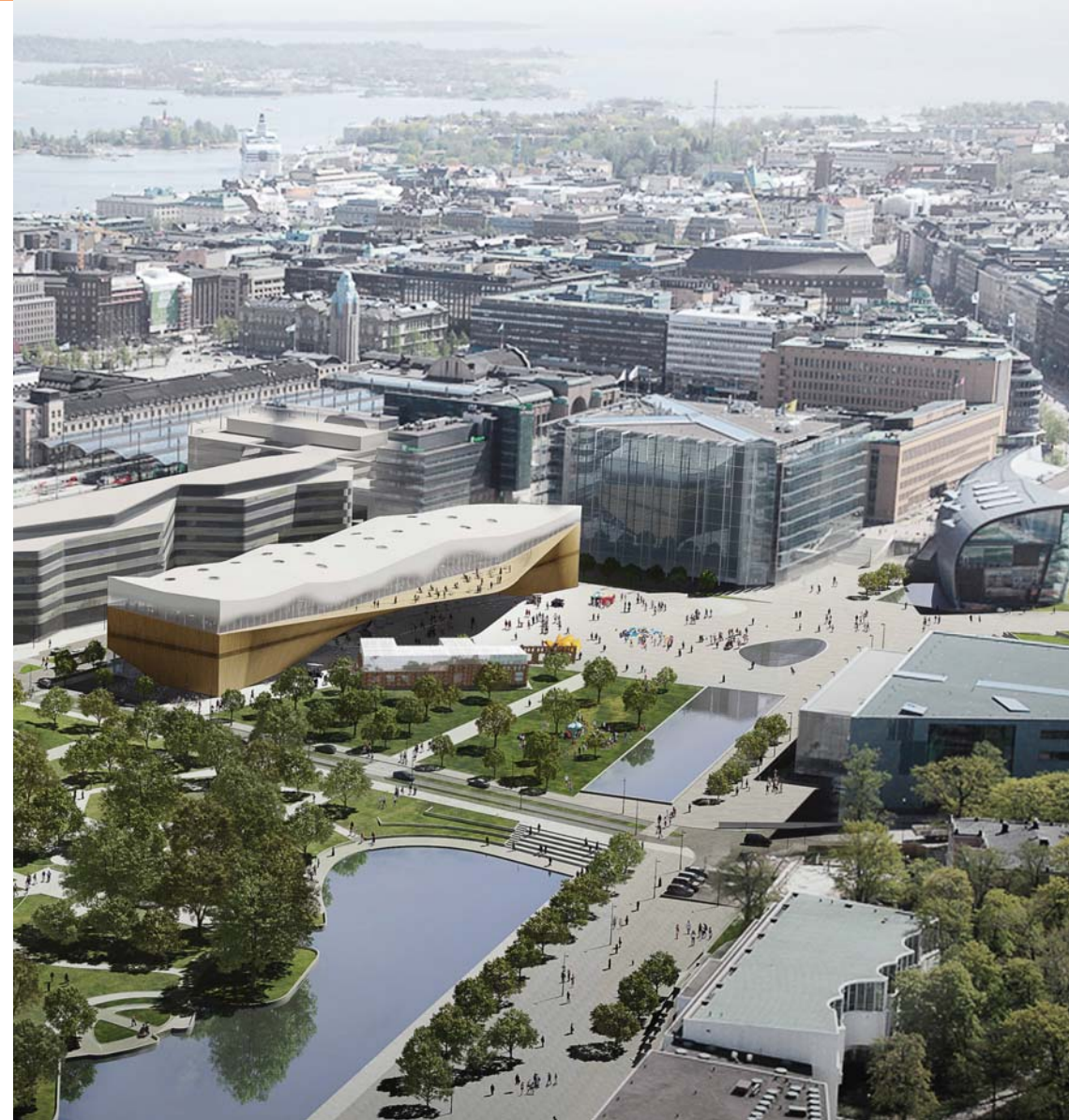


BICYCLE CENTER 2.0



INSPIRATION

THE WAREHOUSE IS SURROUNDED BY PROMINENT AND BEATIFUL BUILDINGS WITH A STRONG ARCHITECTURAL IDENTITY. ESPECIALLY IN THE NEAR FUTURE WITH THE ADDITION OF THE CENTRAL LIBRARY. THEY ALSO DISPLAY A WIDE VARIETY OF DIFFERENT MATERIALS. THIS MAKES IT A CHALLENGE TO DESIGN THE CENTER SO THAT IT FITS HARMONIOUSLY IN TO THE AREA BUT HAS ITS OWN IDENTITY NEXT TO THE SURROUNDING GIANTS. A BEATIFUL BUILDING THAT ADDS VALUE TO THE AREA AND SERVES A PURPOSE LIKE THE BIGGER ONES AROUND IT.

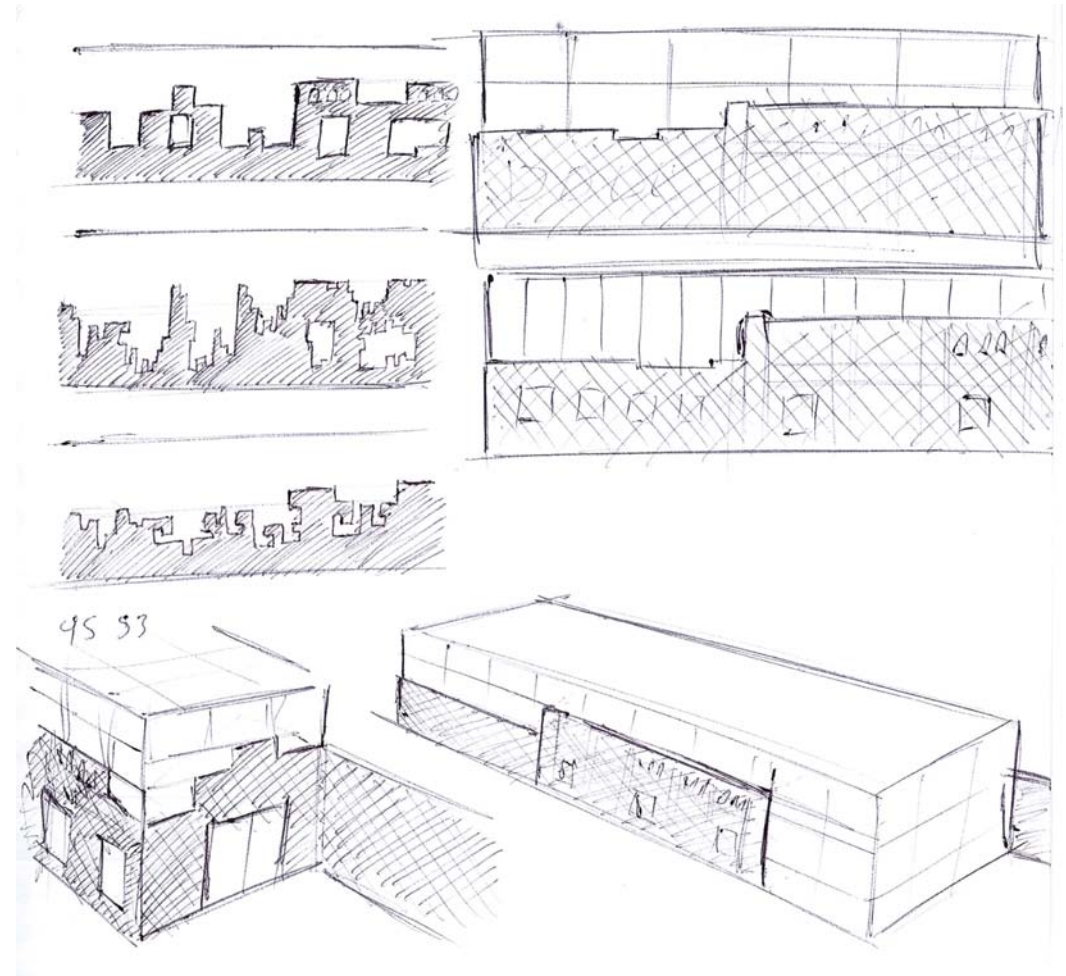
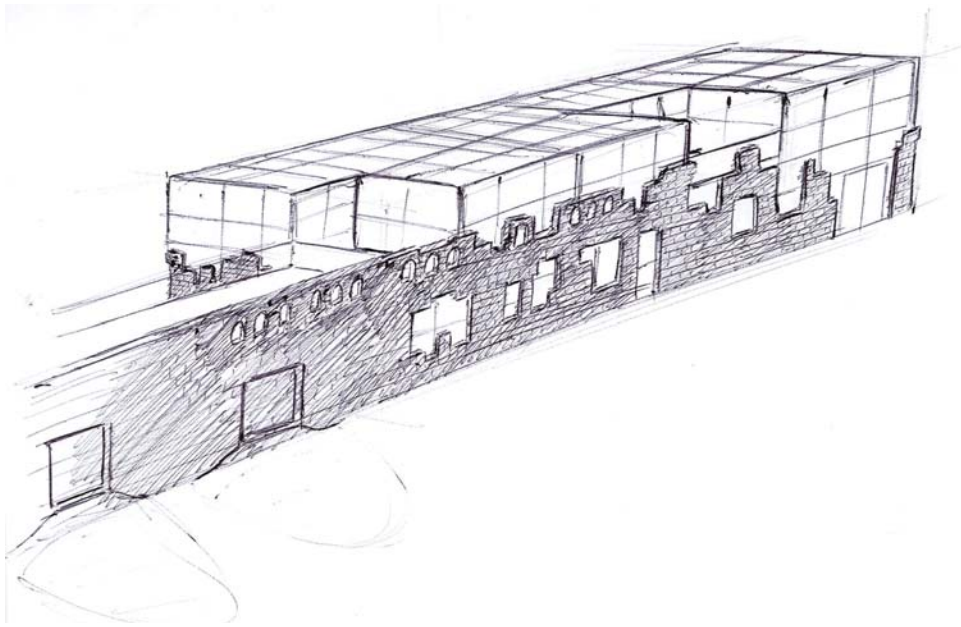


BICYCLE CENTER 2.0



BICYCLE CENTER 2.0

ADAPTIVE REUSE IS THE PRACTICE OF RENOVATING OLD BUILDINGS AND ADAPTING THEM TO NEW PURPOSES. OFTEN ADDING NEW STRUCTURES. WE DECIDED THAT A MINIMALISTIC APPROACH WOULD BEST CONTRAST THE WAREHOUSE RUINS.

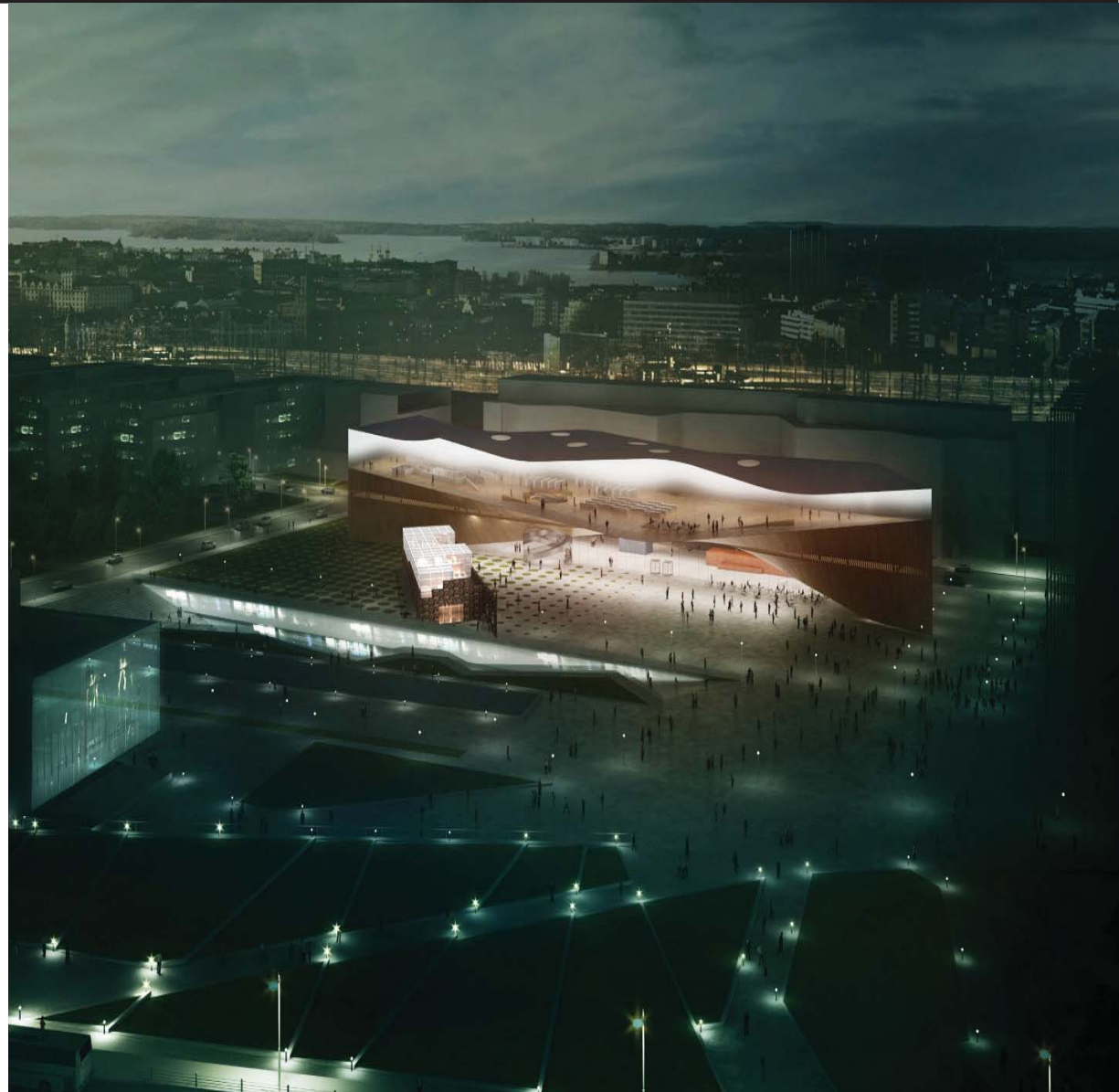


BICYCLE CENTER 2.0



BICYCLE CENTER 2.0

OUR PROPOSAL IS A MODERN MINIMALISTIC BUILDING ON TOP OF THE EXISTING STRUCTURE. THE POLAR OPPOSITE OF THE WAREHOUSE REMAINS BUT MERGING SEAMLESSLY INTO ONE BUILDING. A PAVILION OF QUALITY MATERIALS , GLASS, STEEL AND WOOD.



BICYCLE CENTER 2.0

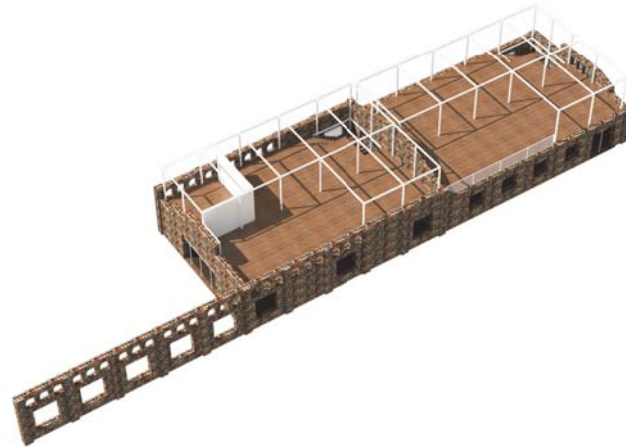
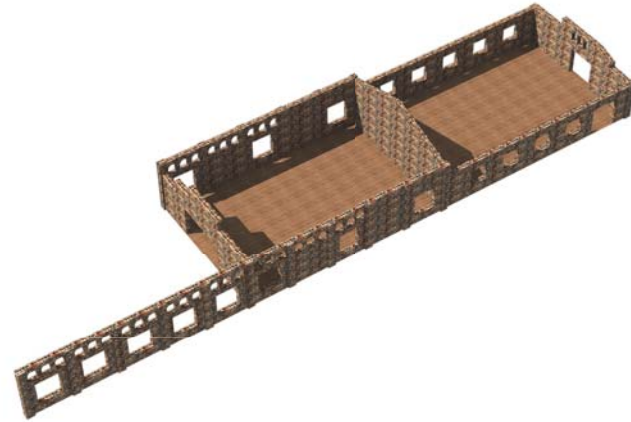


BICYCLE CENTER 2.0

THE STEEL STRUCTURE SUPPORTS BOTH THE SECOND FLOOR, GLASS FACADE AND THE RUINS OF THE WAREHOUSE. THE FRAGILE WALLS OF THE WAREHOUSE CANT SUPPORT STRUCTURES THUS A SYMBIOSIS IS FORMED BETWEEN THE TWO.

THE WAREHOUSE PROVIDES A FOUNDATION, WARMTH AND HISTORY WHILE THE GLASS STRUCTURE GIVES SUPPORT, FUNCTION AND A ROOF.

A MARRIAGE OF GLASS AND BRICK.



BICYCLE CENTER 2.0



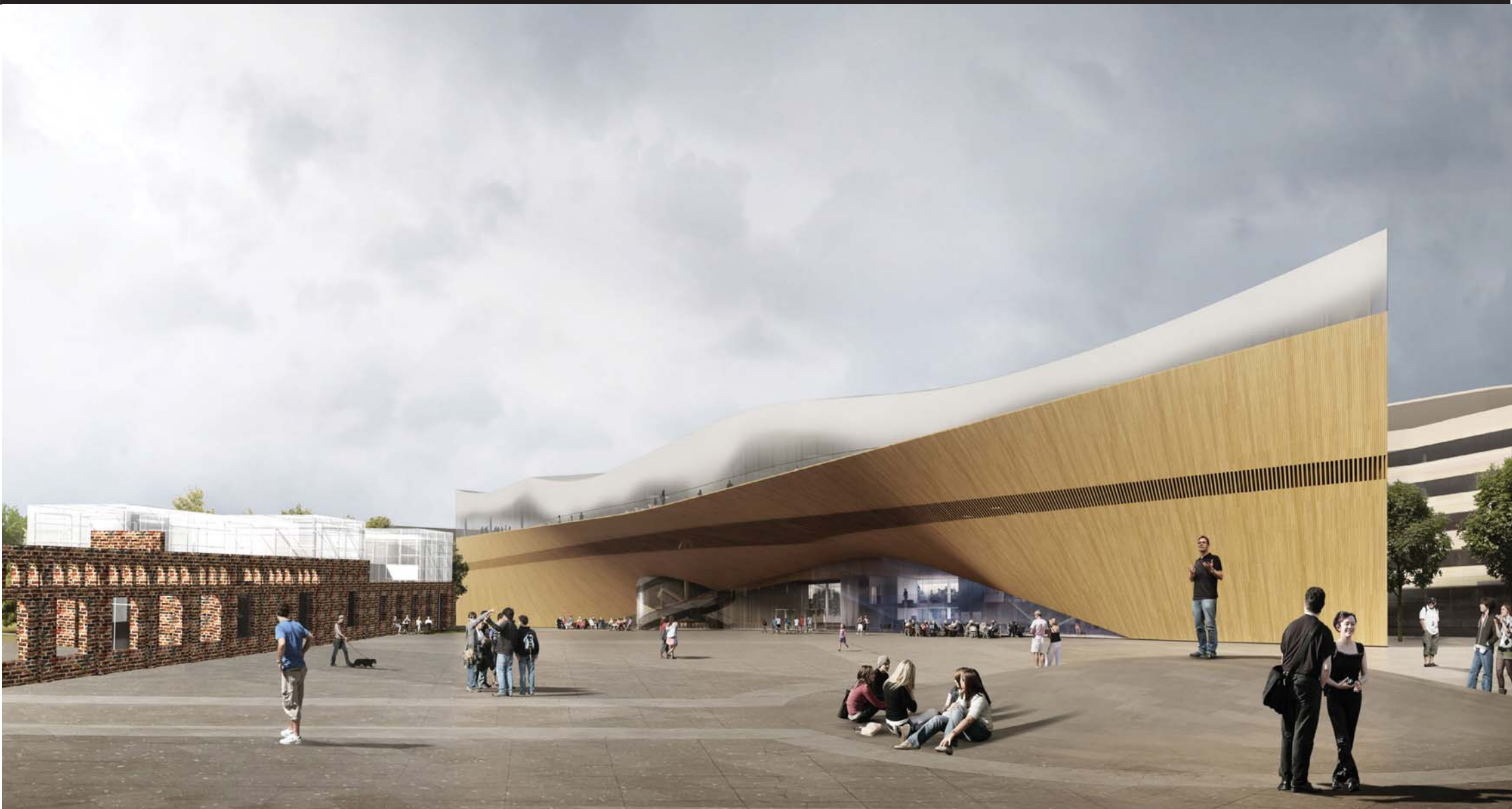
BICYCLE CENTER 2.0



BICYCLE CENTER 2.0



BICYCLE CENTER 2.0



BICYCLE CENTER 2.0



BICYCLE CENTER 2.0



BICYCLE CENTER 2.0



BICYCLE CENTER 2.0



BICYCLE CENTER 2.0



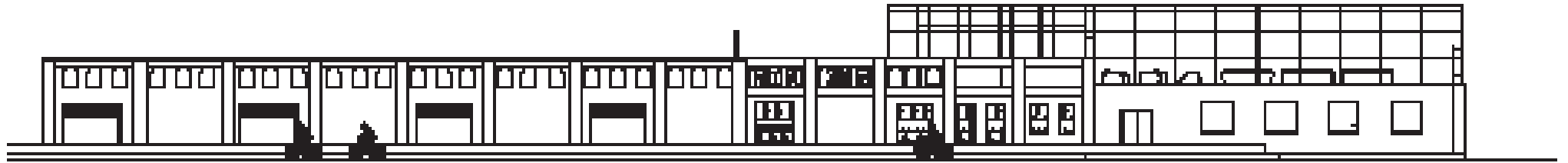
BICYCLE CENTER 2.0



BICYCLE CENTER 2.0



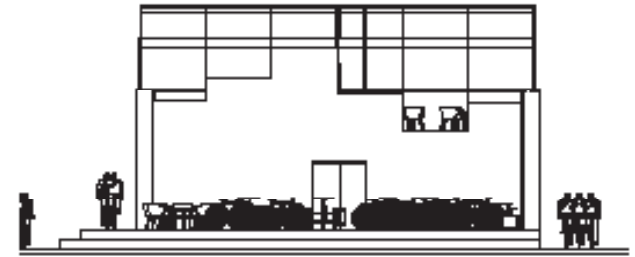
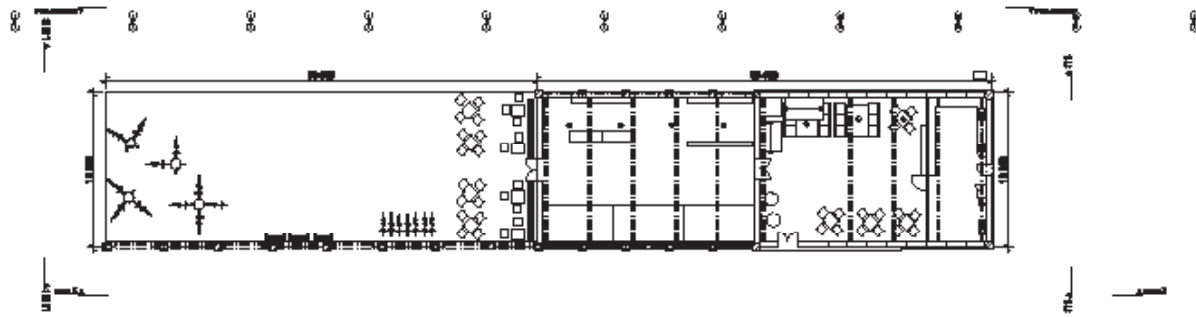
BICYCLE CENTER 2.0



BICYCLE CENTER 2.0



BICYCLE CENTER 2.0



BICYCLE CENTER 2.0



BICYCLE CENTER 2.0

FACILITIES

SHOP

LOCKERS

CAFÉ

RESTAURANT

HANGING AREA

INSIDE PARKING

REPAIR CENTER

INFO

TOILETS

SAUNA

SHOWERS

ROOF TERRACE

PARKING

OUTSIDE REPAIR

STATION 24/7

TERRACE

GOOD COMPANY AND LOTS OF
OTHER CYCLISTS



BICYCLE CENTER 2.0



TEMPORARY CENTER

- Repair shop
- Space for bicycle parking racks



BEFORE BUILDING THE FINAL BICYCLE CENTER WE PROPOSE MOVING THE CURRENT CENTER IN A TEMPORARY STRUCTURE NEAR THE WAREHOUSE RUINS. THE STRUCTURE IS AN ALUMINUM FRAME TENT WITH GLASS FACADES.

- Entrance
- Space for optional services



THE TEMPORARY BICYCLE CENTER HAS FACILITIES FOR ALL THE CORE FUNCTIONS OF THE CENTER: REPAIR, STORAGE, INFO, STORE. THE SECOND ENTRANCE MAKES IT POSSIBLE TO ADD ADDITIONAL SERVICES SUCH AS A CAFE.



TEMPORARY CENTER



FOR SELF-SERVICE REPAIR THE CENTER PROVIDES A DERO FIX-IT- BIKE MAINTENANCE STAND. BASIC TOOLS AND AN AIR PUMP ARE ALSO PROVIDED.



THE COVERED MAINTENANCE AREA ALSO HAS A BIKE PARKING AREA ESTIMATED TO HOLD UP TO 90 BIKES. OUR PROPOSAL FOR THE BIKE-RACK IS MADRAX HEAVY DUTY WINDER HW238-15.



SOURCES

HELSINGIN KAUPUNGIN PAIKKATIETOPALVELU PTP.HEL.FI/

FINLAND OY WWW.TIETOA.FI

WWW.THEPOLISBLOG.ORG

WWW.GREENBEANCHICAGO.COM

WWW.NYT.FI MARKUS JOKELA / HS.

ARKKITEHTITOIMISTO ALA OY WWW.ALA.FI

HANNU LINDROOS / SUOMEN KUVALEHTI

WWW.MADRAX.COM

WWW.DERO.COM

BICYCLE CENTER 2.0

