

INNOVATION

PROJECT



BICYCLE SERVICES IN CAMPUS AREA

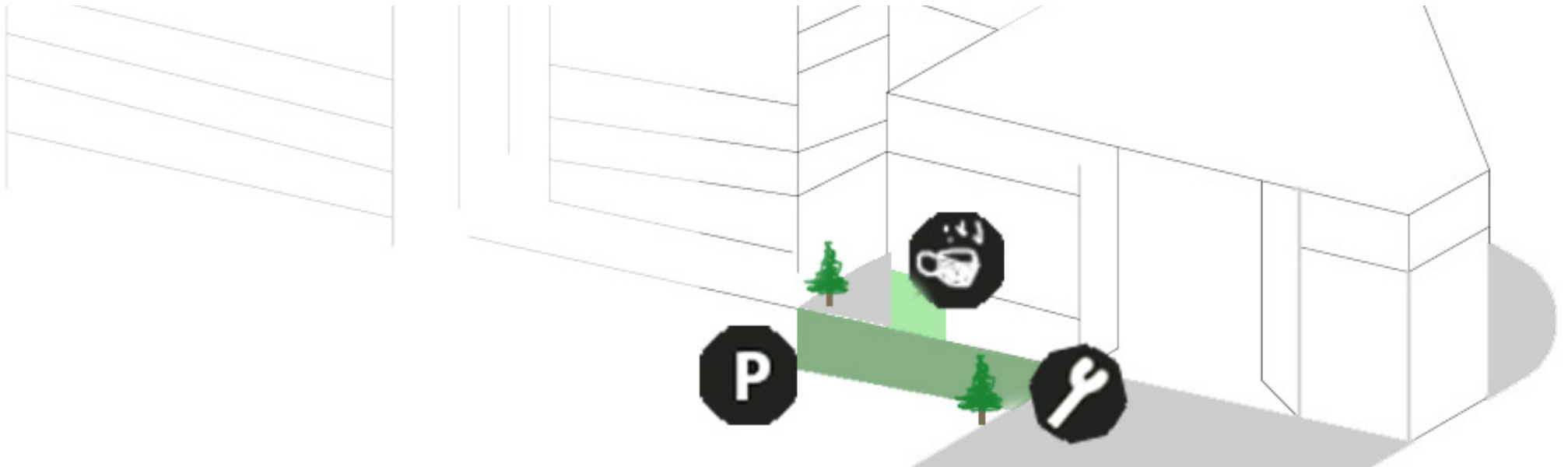
What kind of bicycle service would be important and functional in Myllypuro campusarea & also for the neighbourhood?

Marjut Riihimäki - Venla Anttila - Merel Furniere

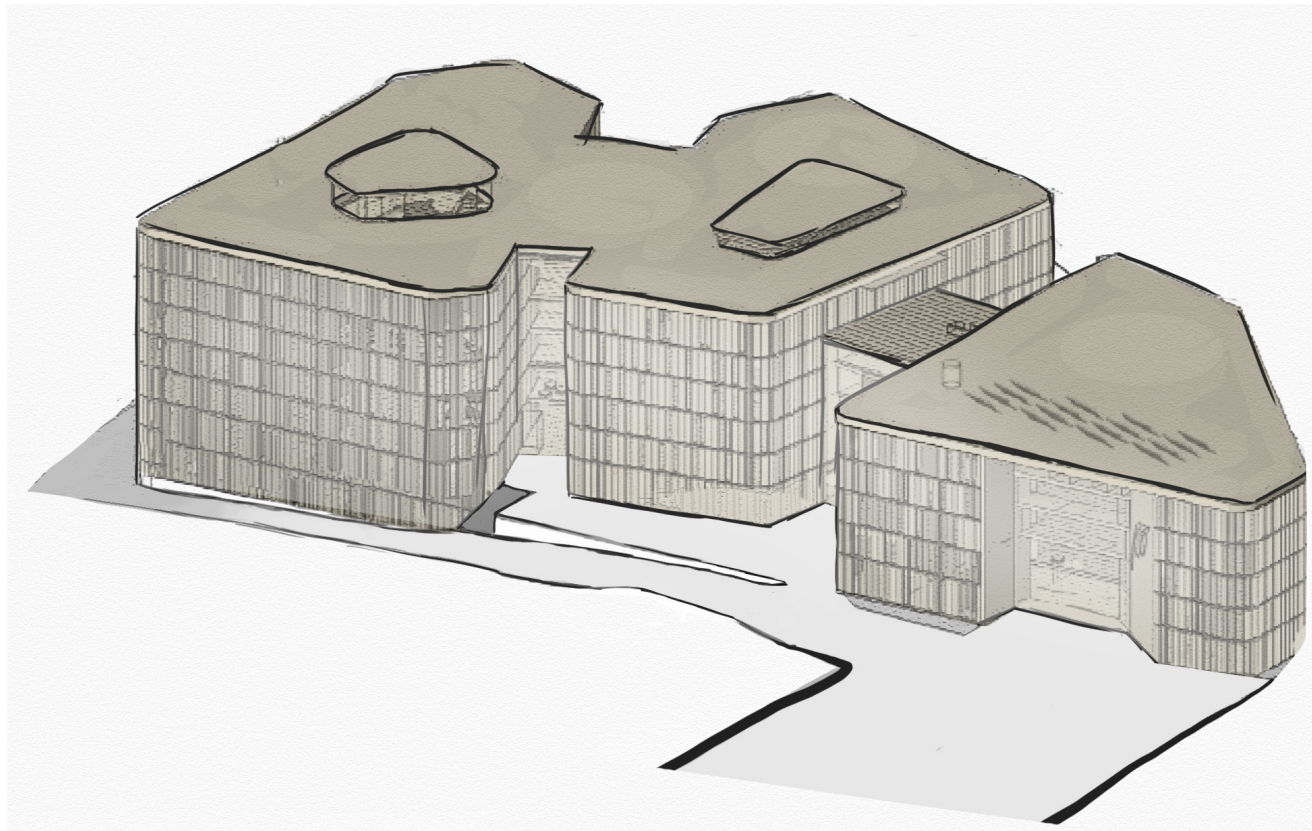
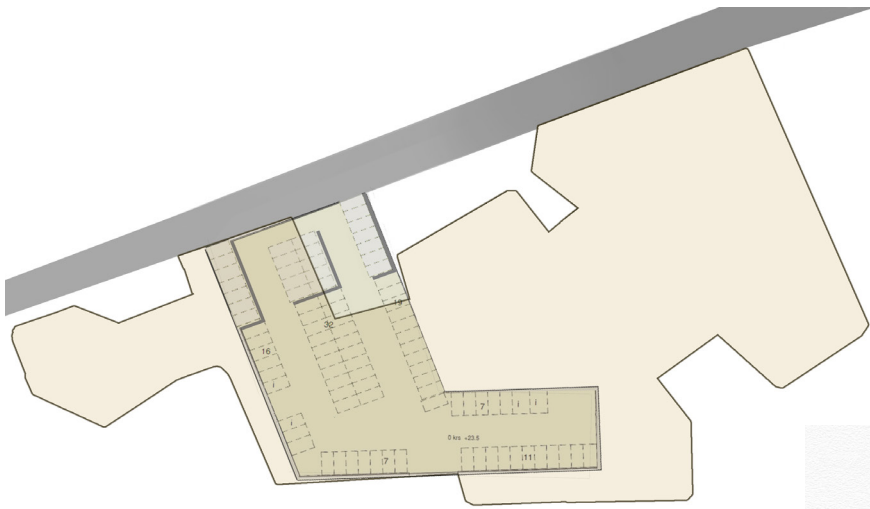
Our goal is to create a campus spot for cyclists that includes all the functions that are needed.
PARKING, REPAIR & CAFE to run the services.

A space that is **ALL YEAR AROUND, 24/7, MULTIFUNCTIONAL, INVITING & SECURE.**

We want to make biking to school as easy as possible by providing **BIKE SERVICES WITH THE ALREADY EXCISTING KEYPATCH**

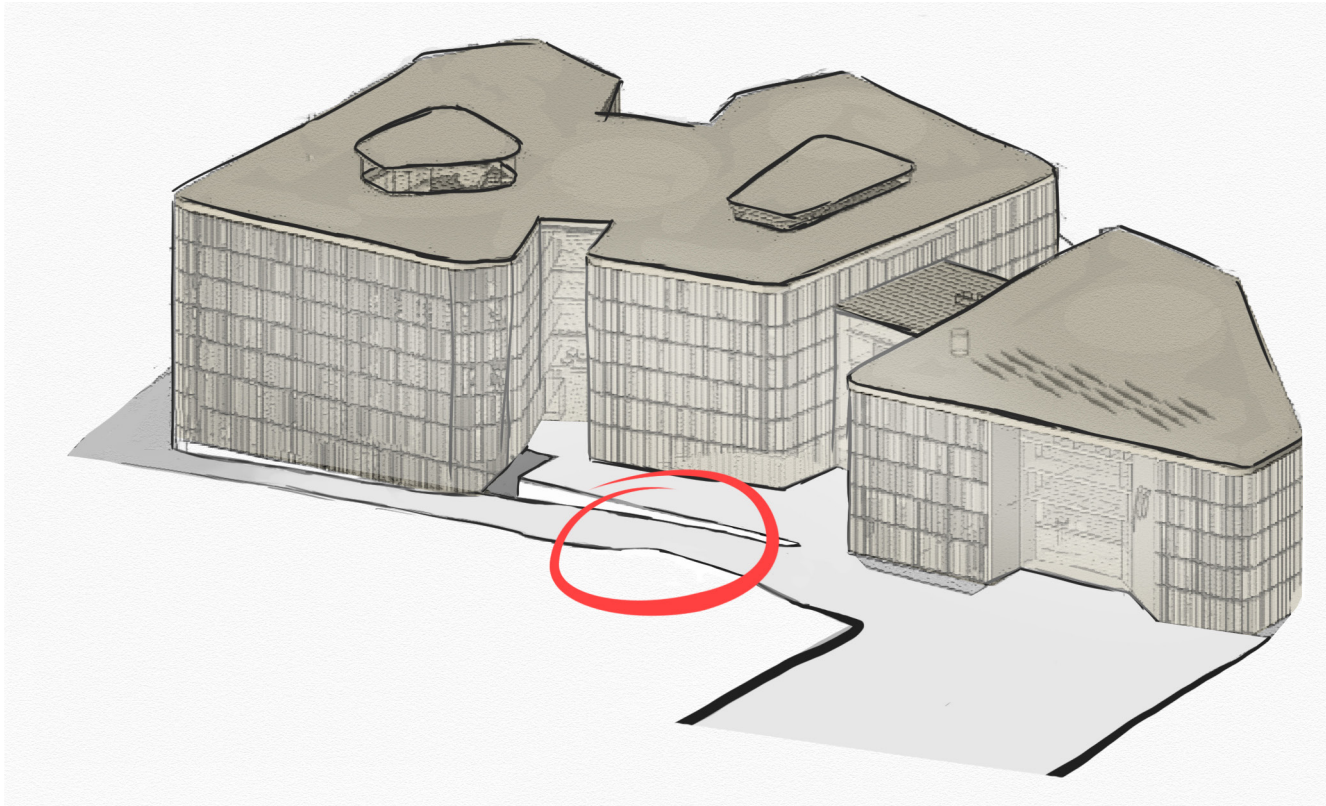


CURRENT CAMPUS ARCHITECTURE



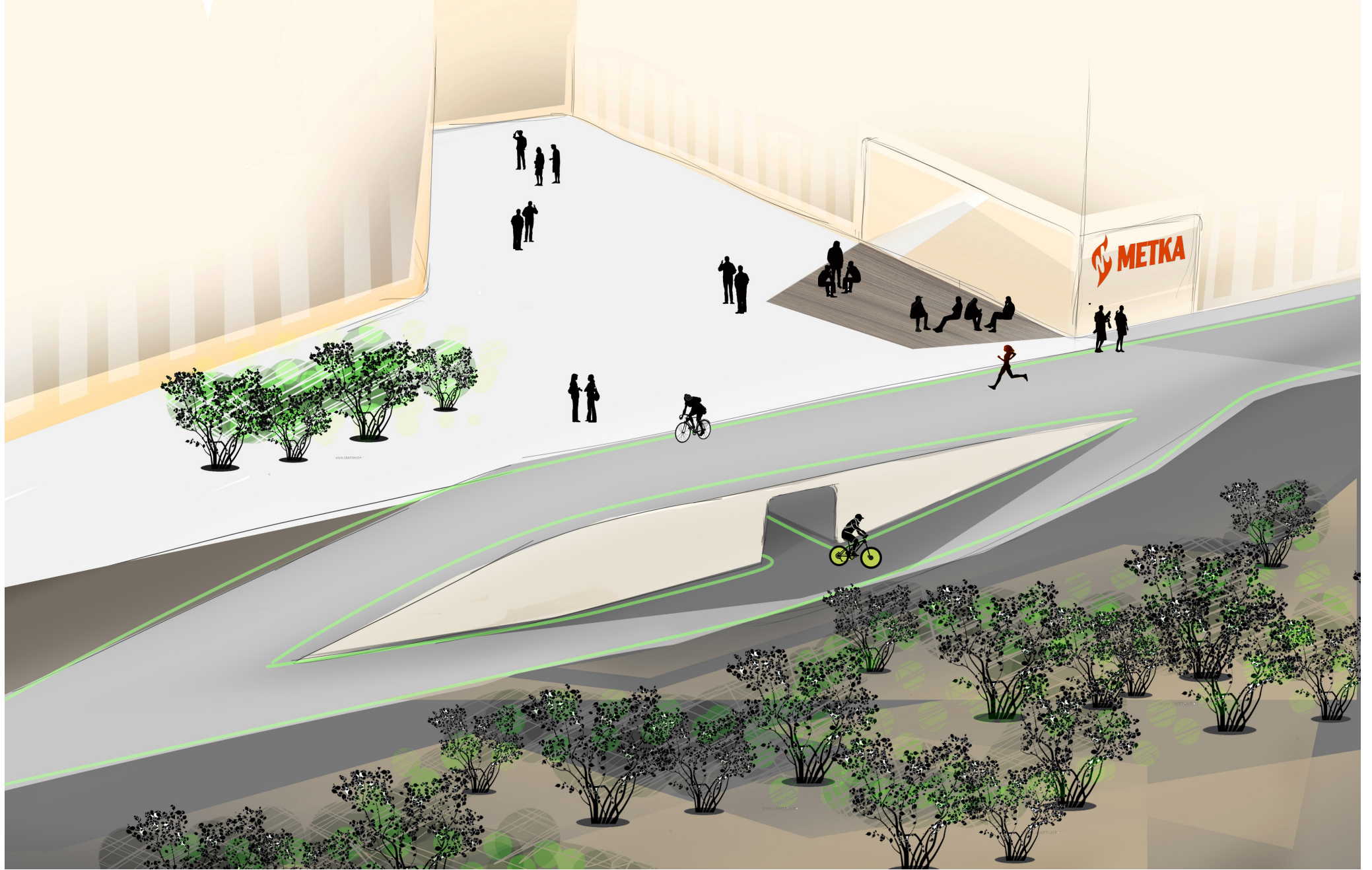
MAPPING

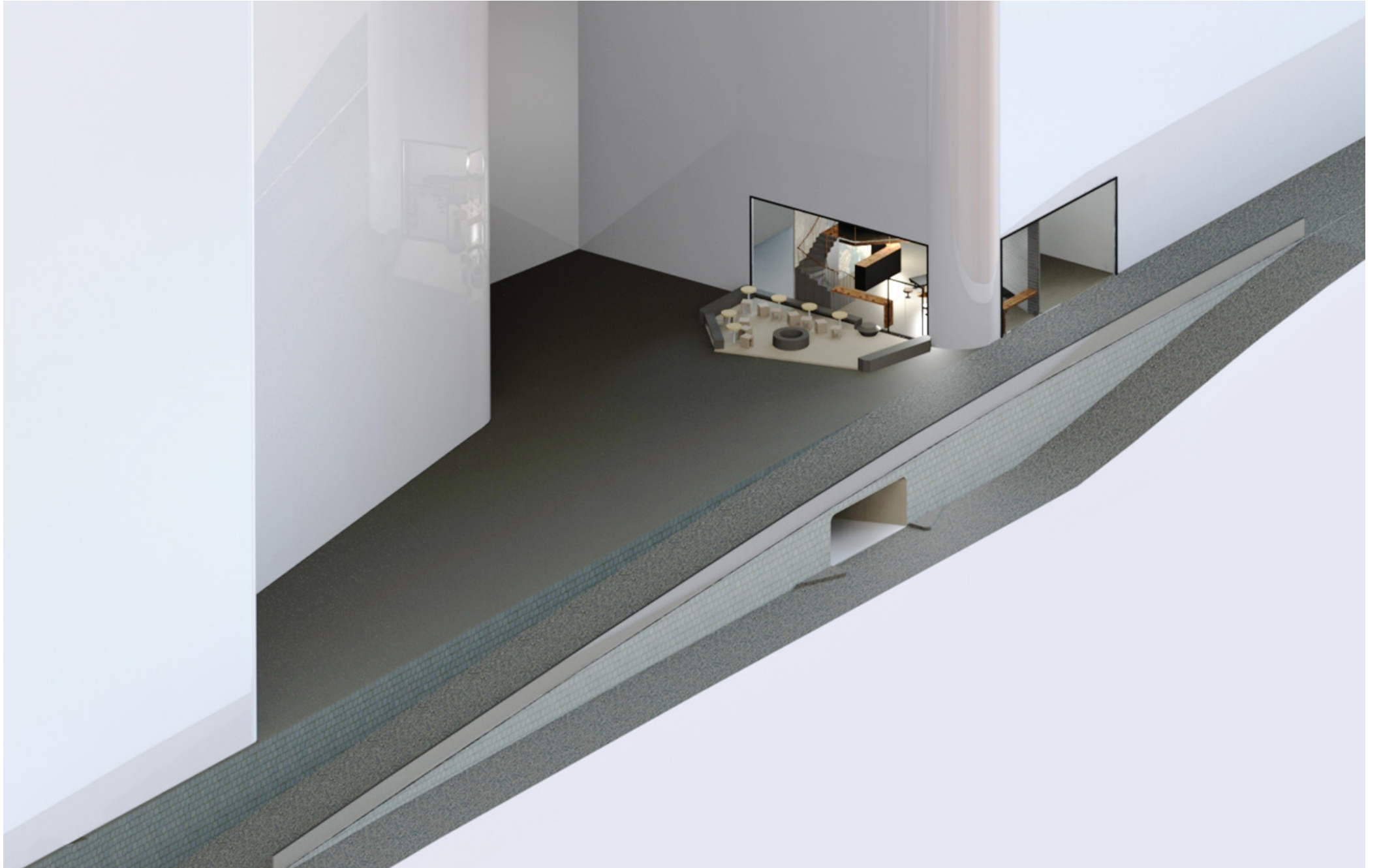
NEW RAMP TO THE PARKING SPACE



We make a **new ramp** next to the existing walking lane in front of the building.

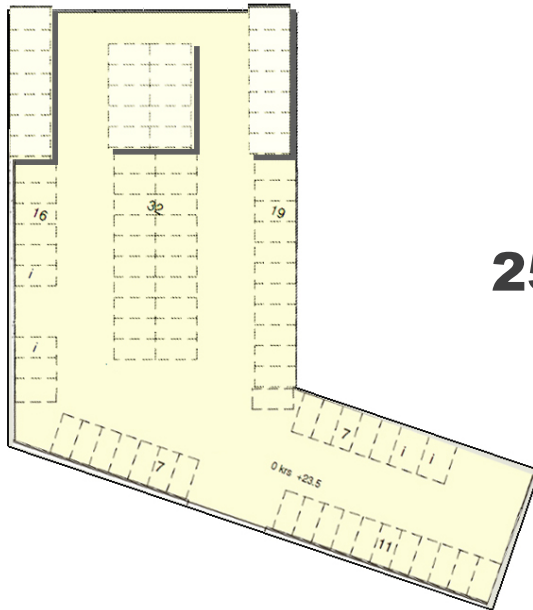
Adequate spacing away from pedestrians & other traffic.





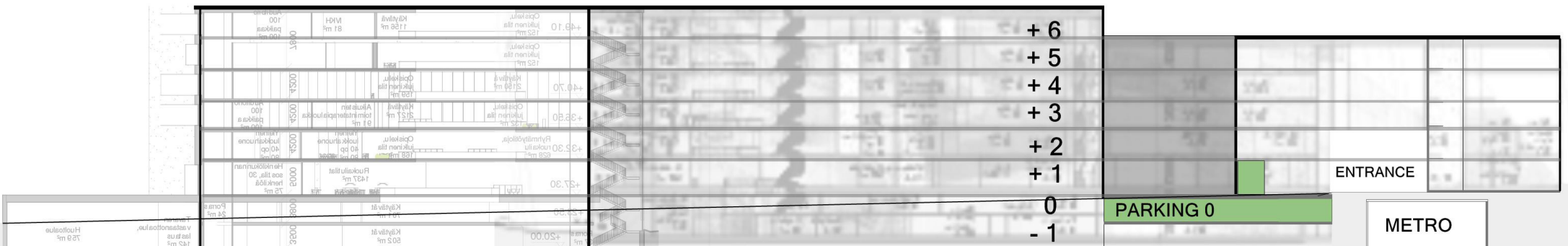
FLOOR ZERO - underground

BIKECAVE



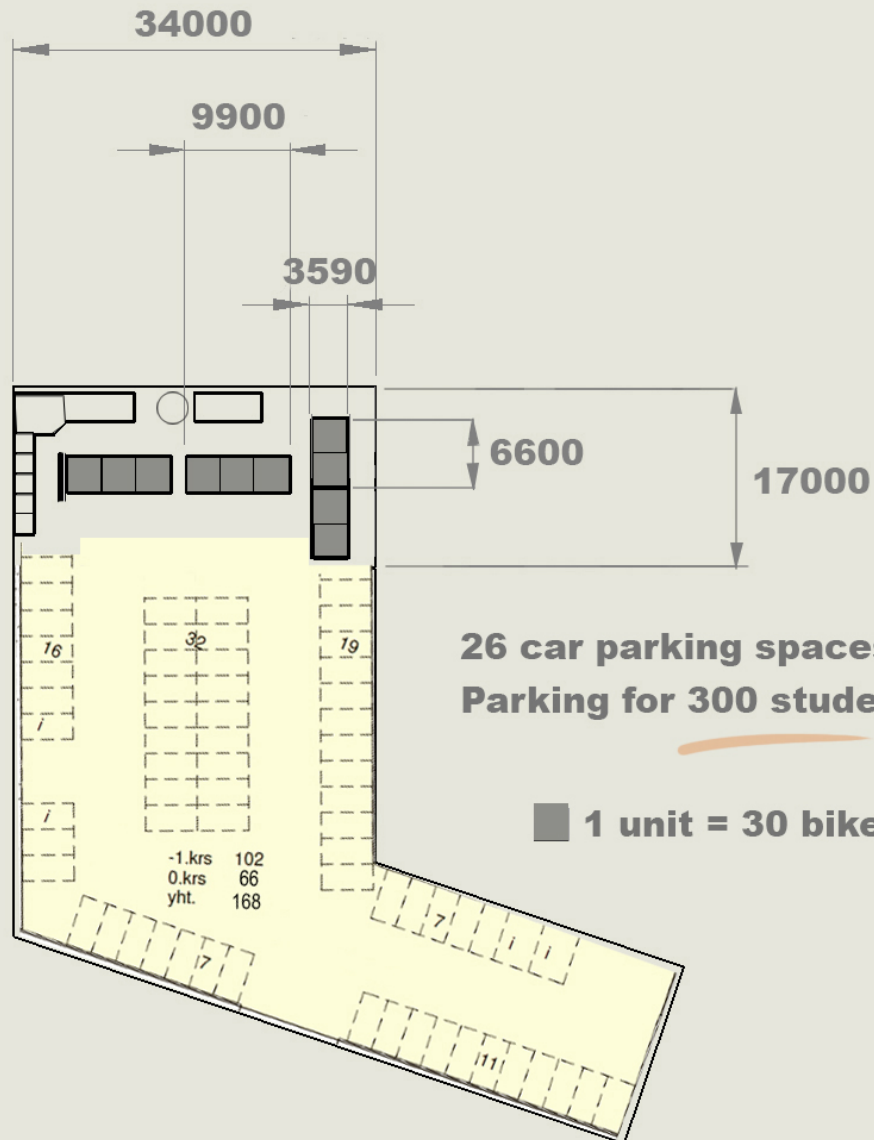
25 CARPLACES

- 300 bikes
- Repair Station
- Rental bikes
- Lockers
- Showers



FLOOR ZERO UNDERGROUND

3.80 m height
578 m²



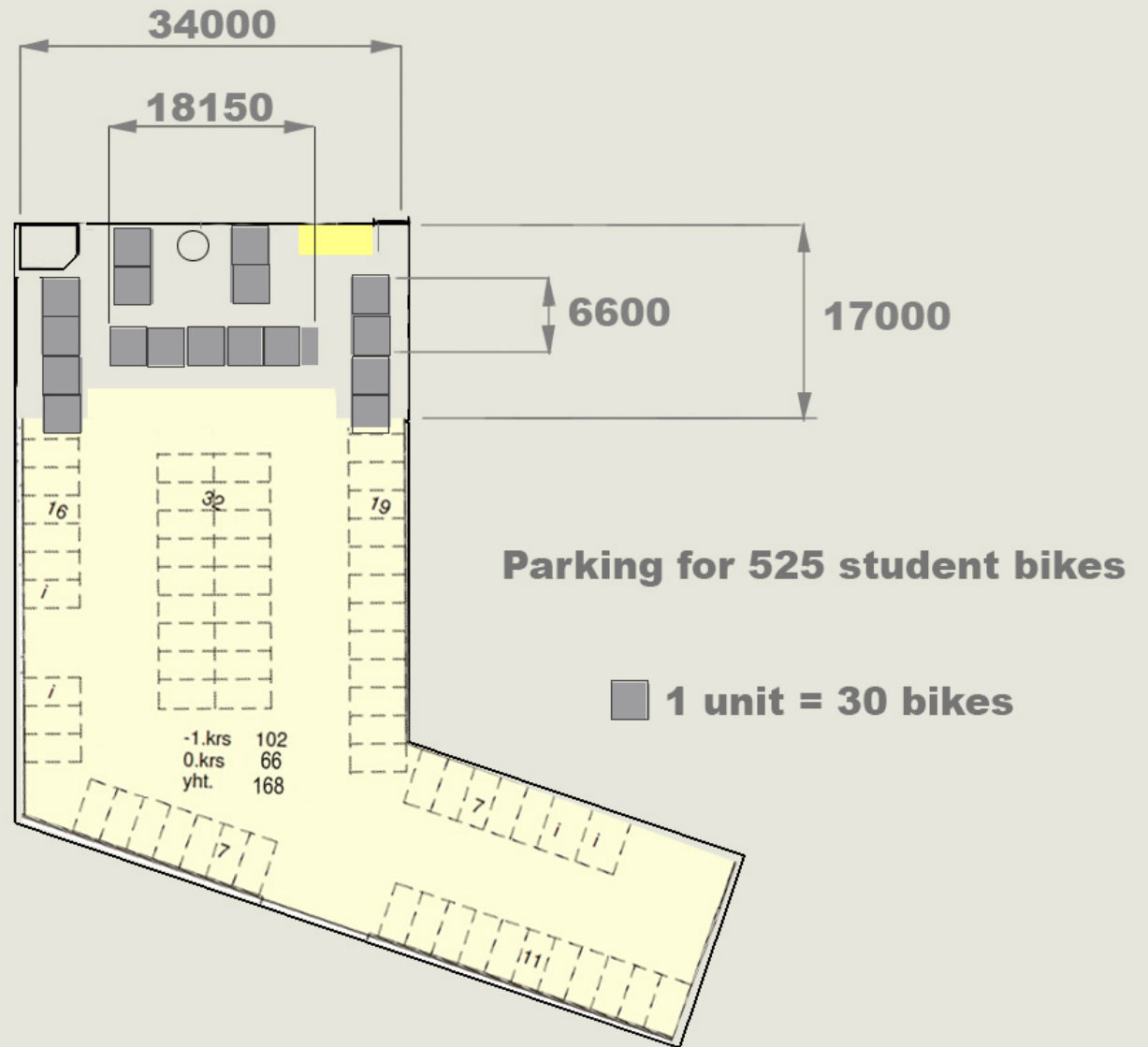
The bikecave is situated underground because it's **safer**, there's a better **protection** for the bikes, the **space is already there** and it's more **comfortable** to put your bike during wintertime.

26 car parking spaces =
Parking for 300 student bikes

■ 1 unit = 30 bikes

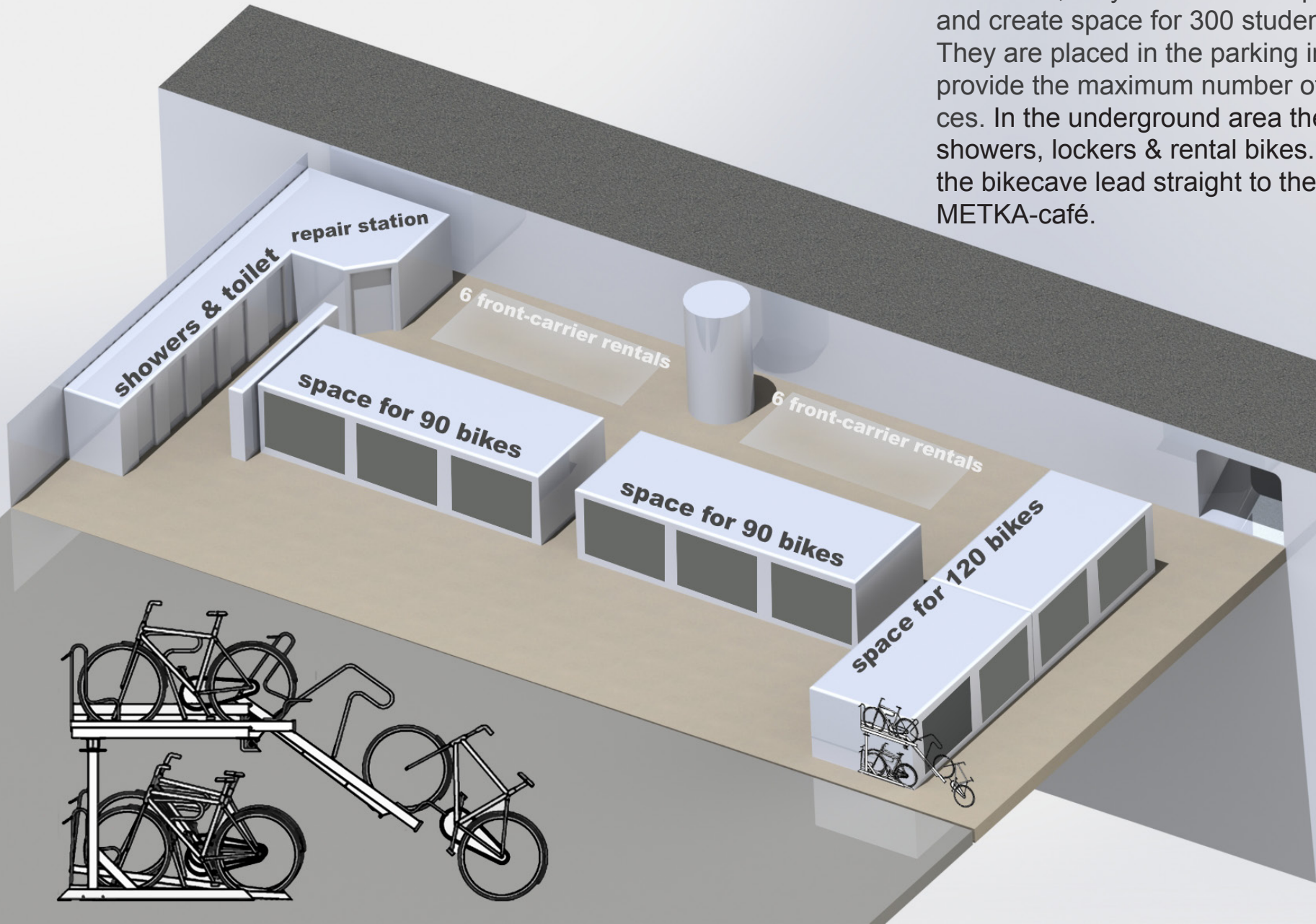
MAXIMIZED CAPACITY

With **scaled down services** we could offer space for over 500 student bikes



FUNCTION BIKECAVE

Inside the parking we used double deck bike racks, they are the most space saving and create space for 300 student bikes. They are placed in the parking in a way to provide the maximum number of bike places. In the underground area there is also showers, lockers & rental bikes. Stairs from the bikecave lead straight to the METKA-café.



BICYCLE SERVICES IN CAMPUS AREA

BIKECAVE

BASIC SERVICES



LOCKERS
for helmets & coats

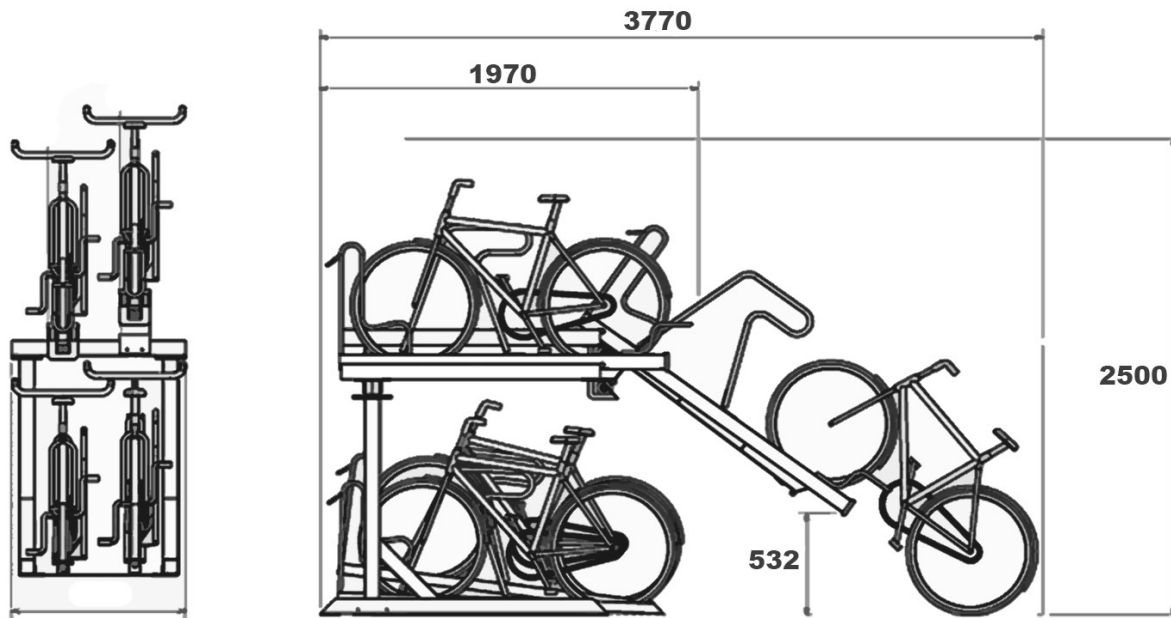


DOUBLE DECK RACKS
for saving space

SHOWERS
& toilets



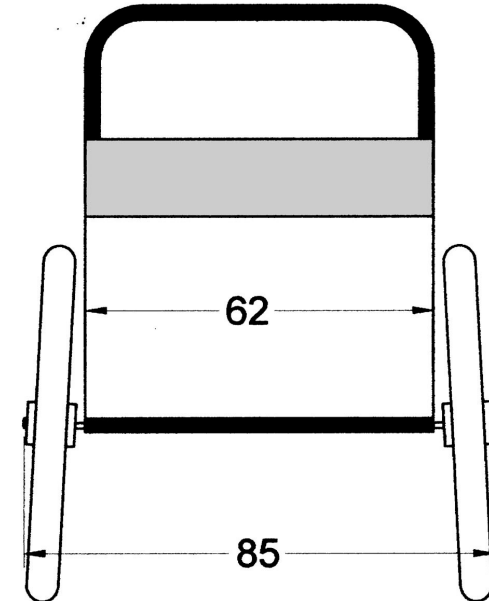
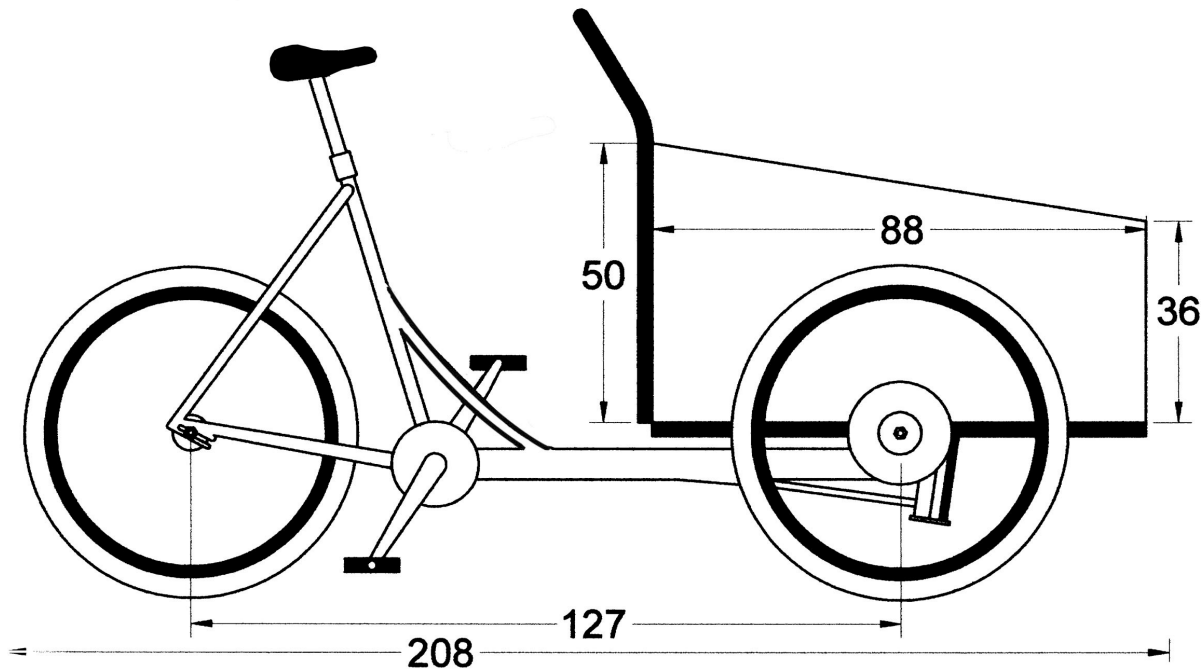
BIKE RACKS



In the bikecave we use double deck bike racks.
The bike racks are made of stainless steel.
The minimum manouvering space is 3.77 meters.

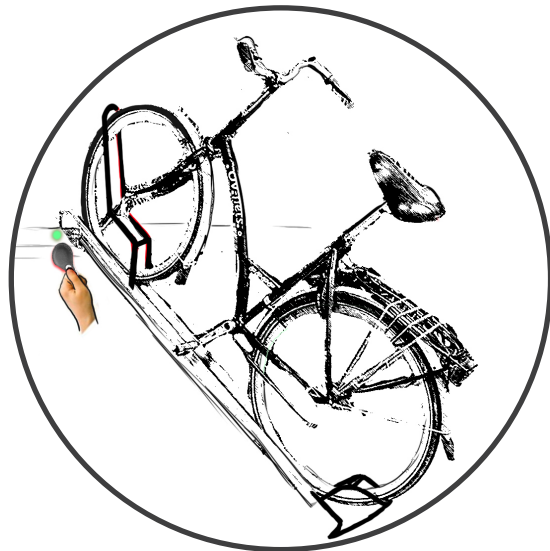
RENTAL BIKES

Rental bikes are stored in the bikecave. Campus offers students two different kind of rental bikes, regular bikes and 12 bikes with front carriers to help transport heavy loads around in the city.



BICYCLE SERVICES IN CAMPUS AREA

STUDENT KEYPATCH



LOCK



BUY



RENT

SERVICE ADDITION TO EXCISTING PRODUCT

Use biking services with one product - student keypatch

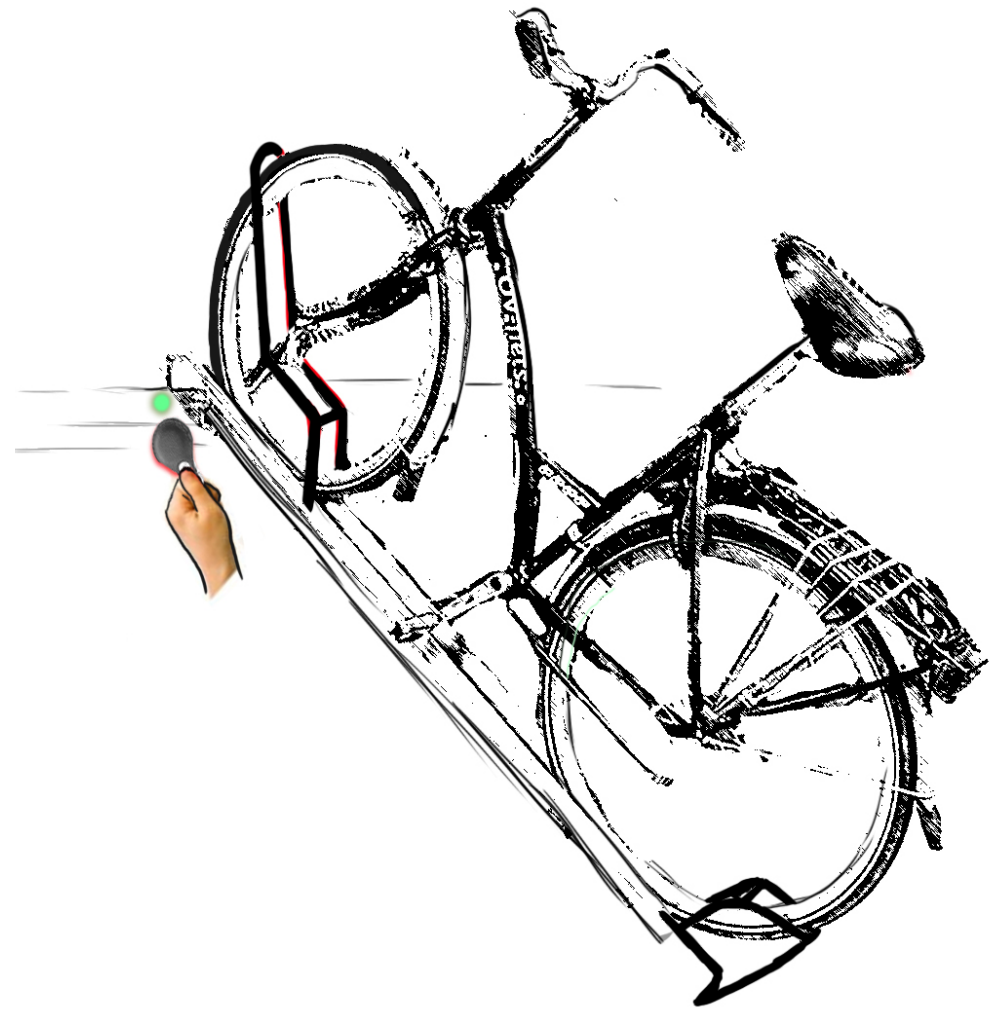
Download personal information & money to it -

Fast payment & identification inside campus

ELECTRICAL LOCKING SYSTEM IS OPERATED BY STUDENT KEYPATCH

BENEFITS

- Easy** don't have to bring own lock with you
- Security** locking and unlocking with your personal key patch
- Fast** less effort and saves time



AN OPTION

FOR NEIGHBORHOOD

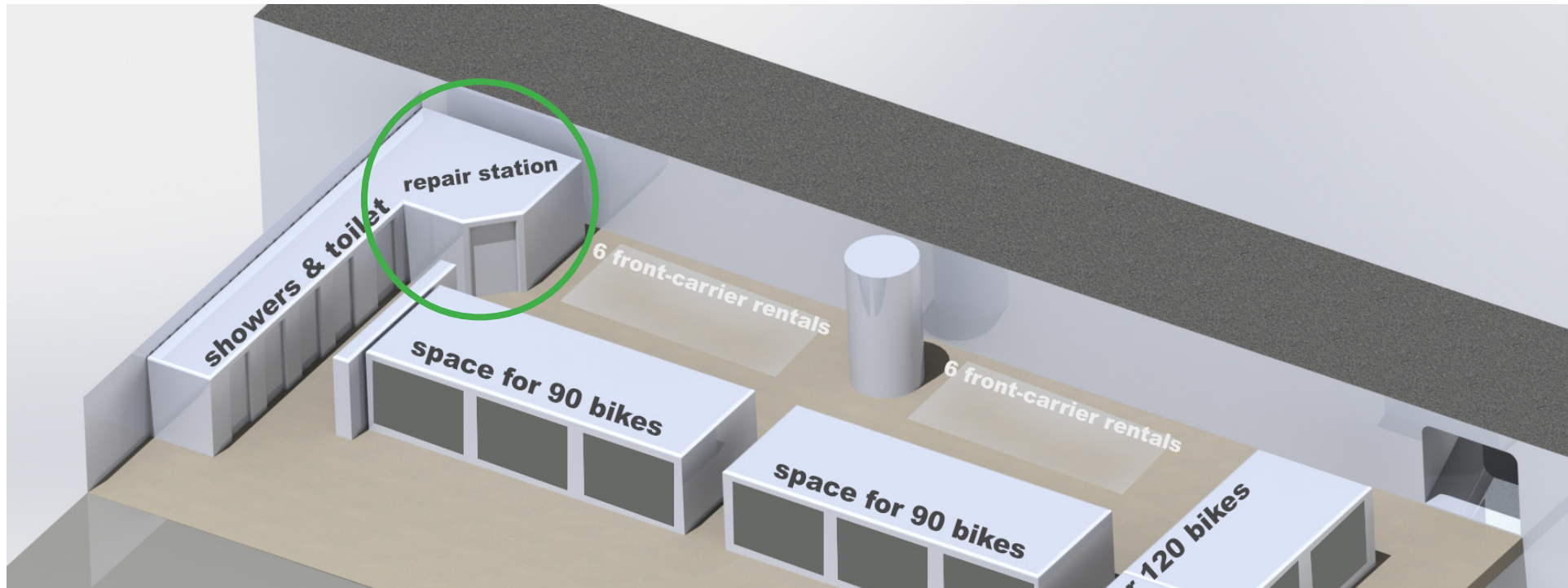
Register your personal travelcard
to the campus renting system

Travelcard used the same way as
the student key patch after registration



BICYCLE SERVICES IN CAMPUS AREA

REPAIRSTATION



FUNCTION REPAIR STATION

3.80 m height
20 m²



SELF-REPAIR STATION

open workspace for self service with all the basics:

- 2 bike maintenance stands
- a washing gear
- air pumps
- bicycle tools
- a bin and a
- vending machine where you can buy energy bars, raincoats etc.

There are instruction boards on the walls.

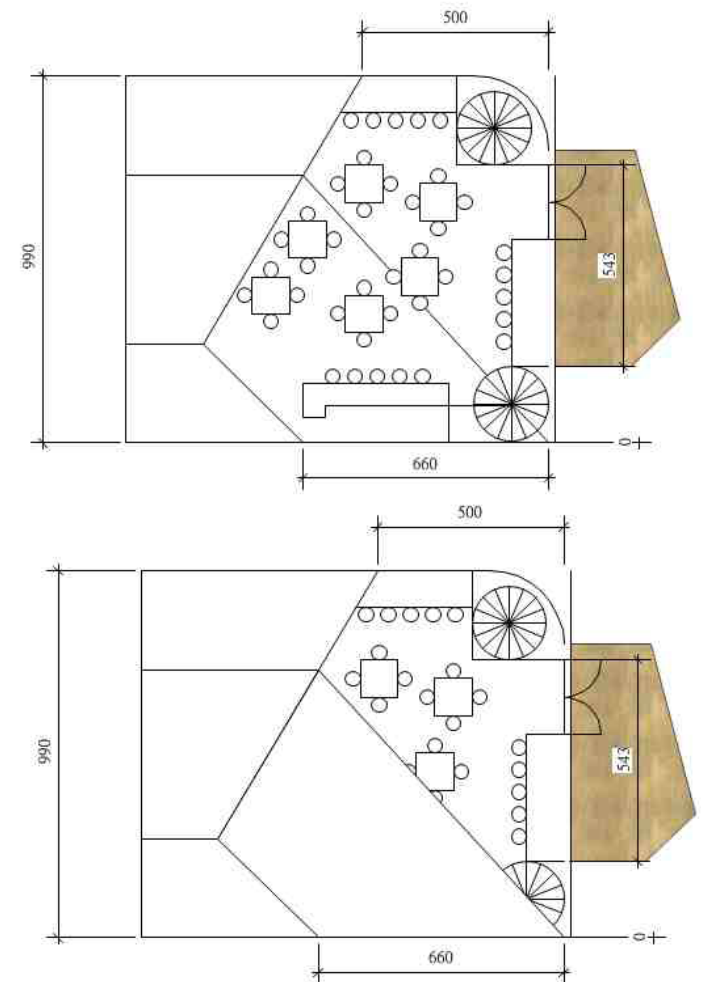
Free to use

METKA CAFE & TERRACE AREA

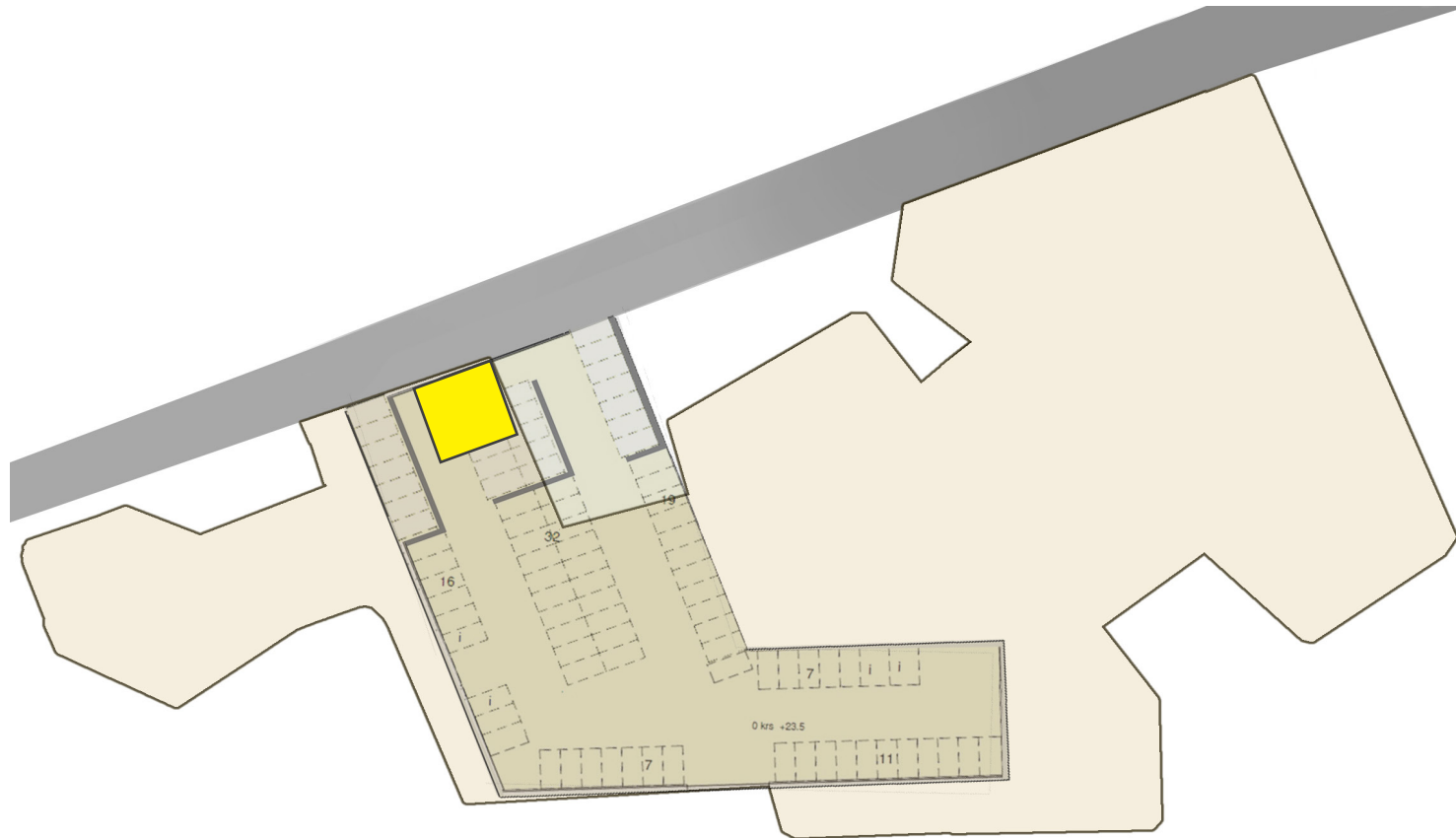
5 m height

METKA café is the service operator for renting services and the place where the METKA-student organisation is located.

An inviting hangaround space located in the corner above the ground. Placed next to the walking lane to make it easy to reach, also for the neighbourhood.

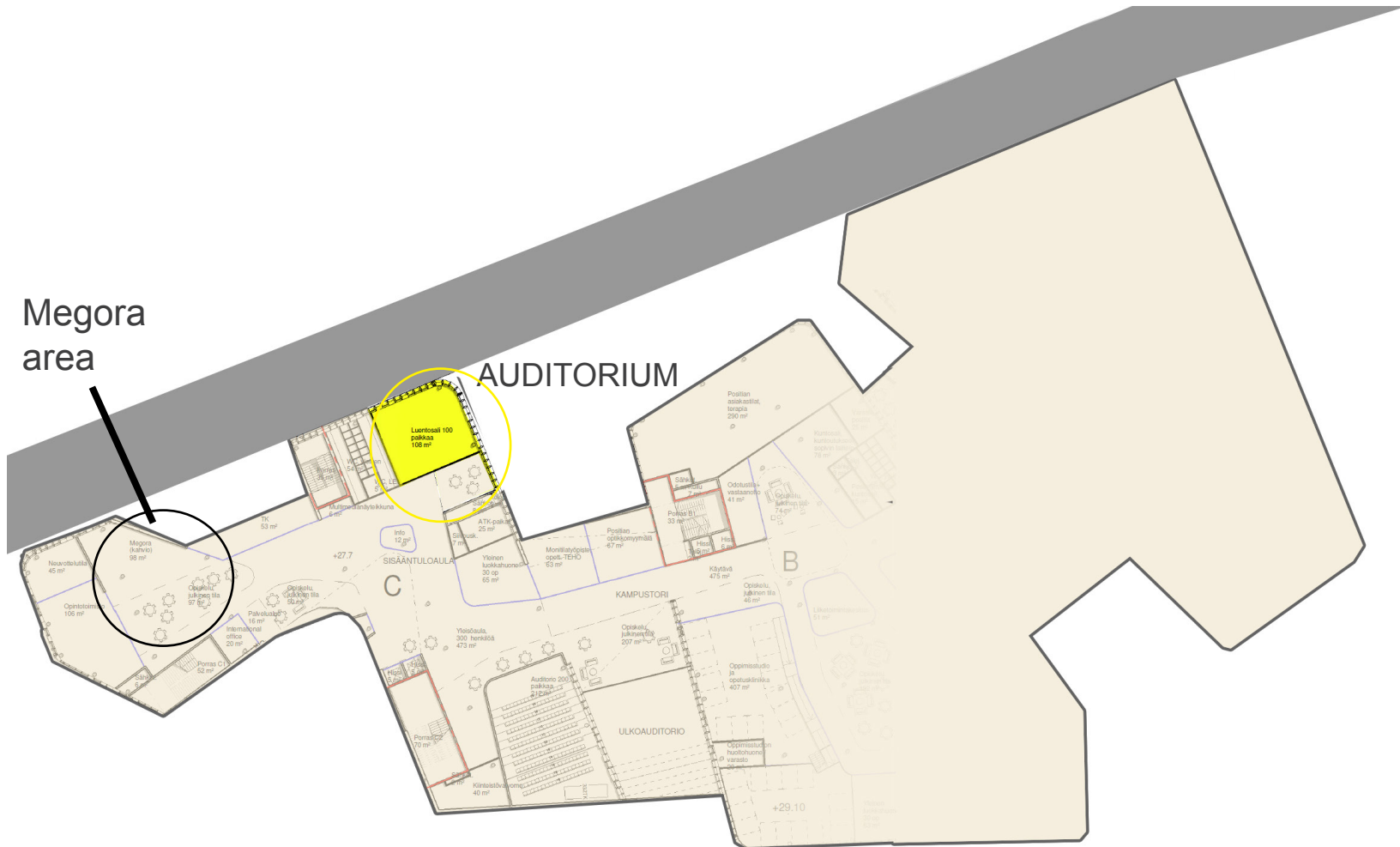


FLOOR +1 - CAFE & TERRACE



The café is situated in the campus on floor 1, above the parking. When you enter the lobby you see the café on your left. The café is on the corner of the right building at the entrance level. It's highly visible to public. From the café there is straight access to the underground parking area.

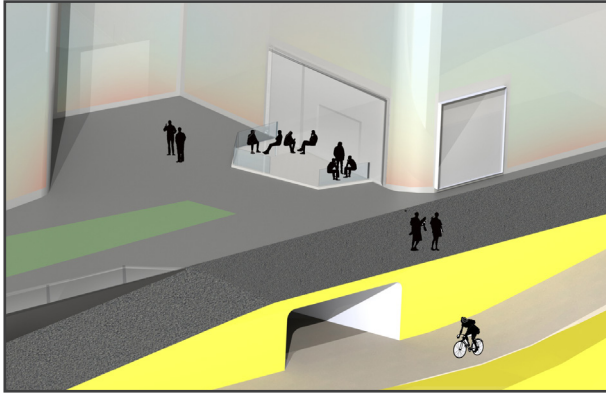
MAPPING LOCATION CAFE



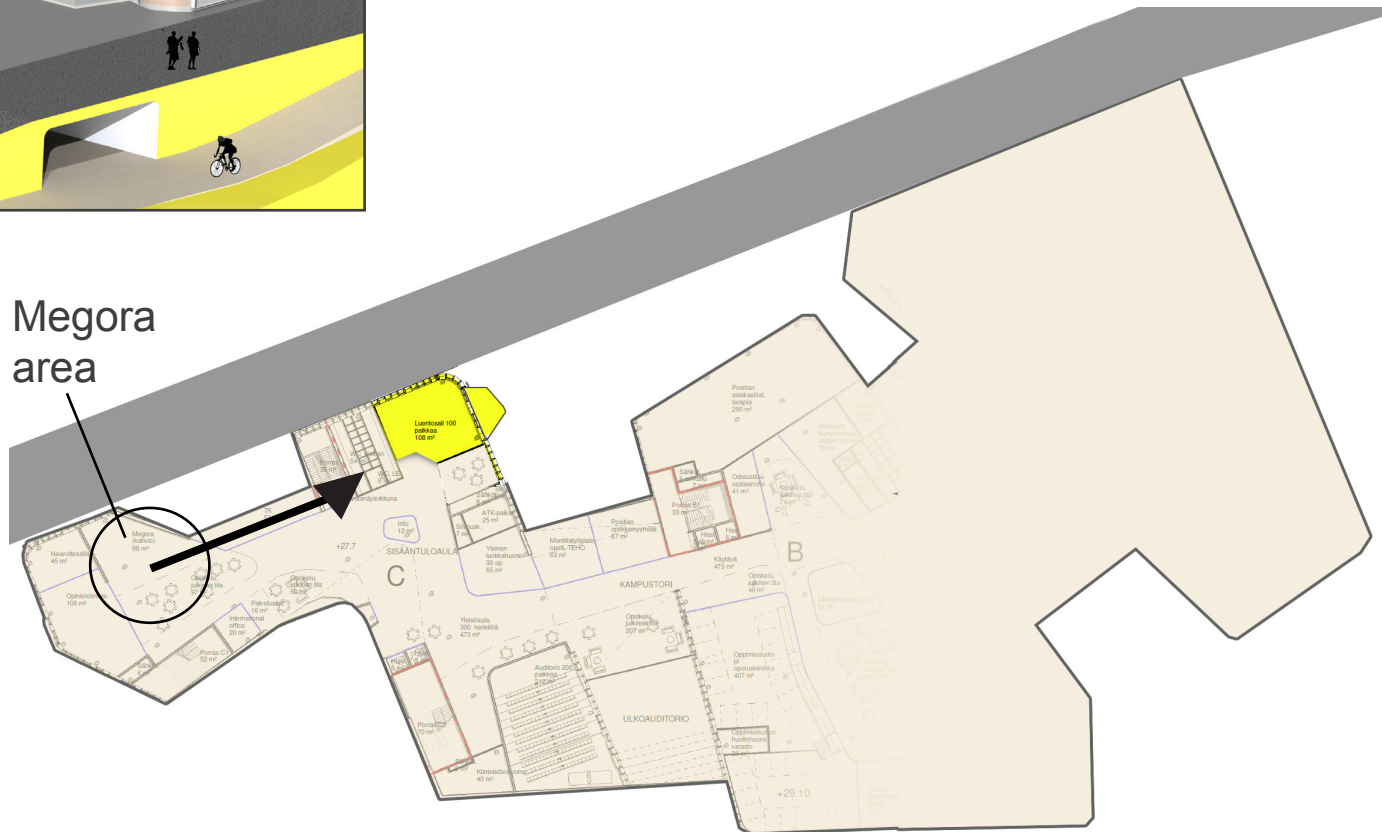
On the location of the café is now planned an auditorium. And left in the campus is planned Megora lounging area.

MAPPING LOCATION CAFE

5 m height



Megara
area



The auditorium is replaced with the café and office space for Metka.
Rental services are run by Metka café;

- straight acces to parking & rental bikes underneath the café
- high visibility to public from the walking street
- separate entrance for public through the terrace



Room height 5.00 meters

Lots of natural light through large windows
High ceiling offers space for second level
(room heights: lower 2.50m, upper 2.30m)

VINTAGE & INDUSTRIAL

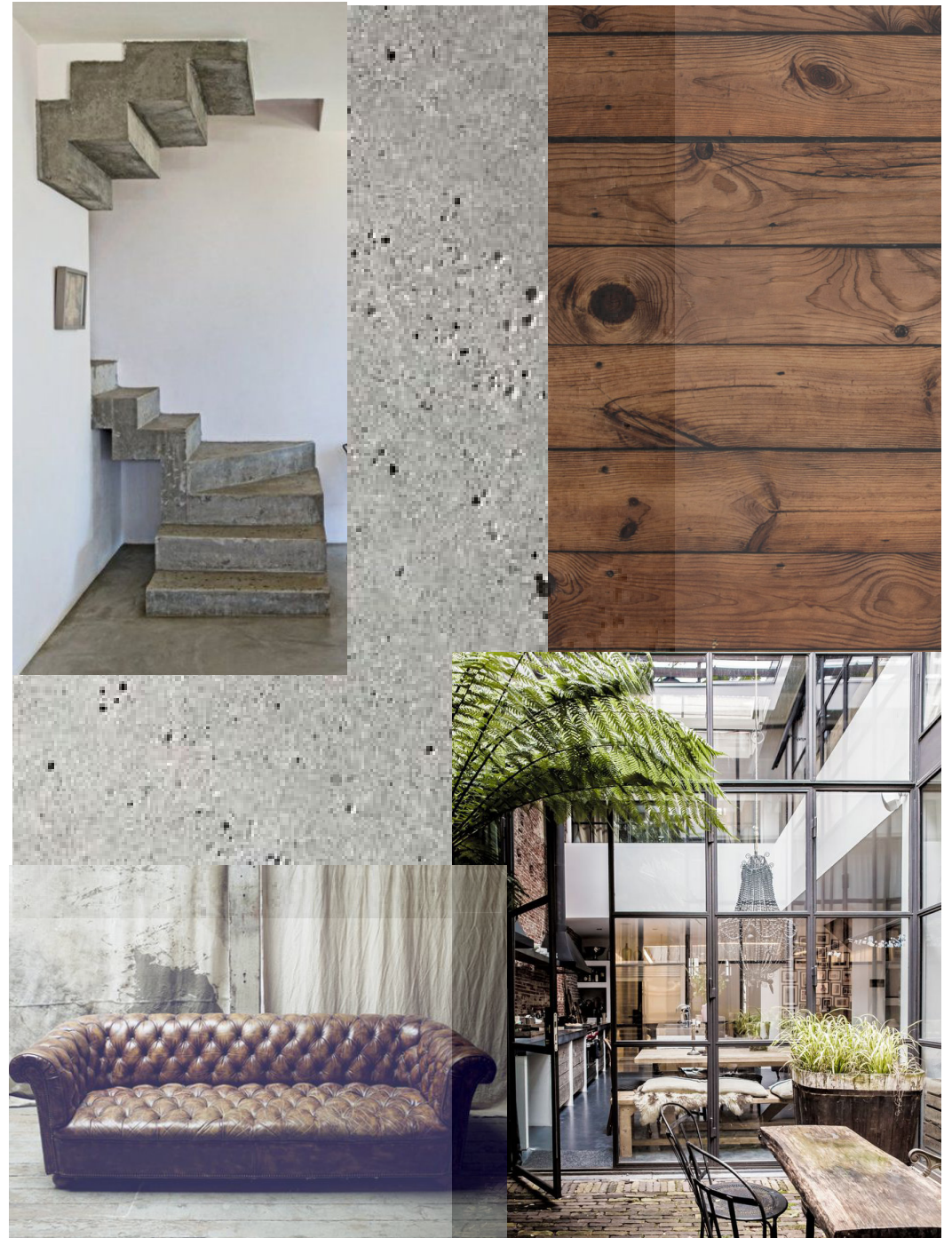
Contrast with the modern looking bright new building

Rude interior that creates an intimate working environment

Long counters by the window to experience the seasons by the window

The middle of the café is a big open space with a concrete floor, so it can be used for a lot of different activities.

Big map on the wall with bikeroutes in Helsinki area.



TERRACE

There are high wide doors from the café to the terrace so the café has a welcoming entrance from the walking lane.

Wide glass door



Green



Long bench

The concept of using the double deck racks with the keypatch locking system can be used in all campuses.

For bigger campuses also the repairstation & a cafe to run the services.

THANK YOU!

